

THE CORPORATION OF THE DISTRICT OF BURNABY

BYLAW NO. 9457

A BYLAW to stop up and close to traffic
portion of road

WHEREAS that portion of road shown on the plan annexed hereto dedicated by Plan 3036 is no longer required for road purposes.

NOW THEREFORE the Council of The Corporation of the District of Burnaby ENACTS as follows:

1. This Bylaw may be cited as BURNABY ROAD CLOSING BYLAW NO. 1, 1990.
2. That portion of road situate, lying and being in the Municipality of Burnaby, in the Province of British Columbia, and being more particularly known and described as that portion of road in District Lot 30, Group 1, New Westminster District, dedicated by the deposit of Plan 3036 containing by admeasurement 142.0 m² shown hatched on the plan prepared by Richard T. Hargraves, B.C.L.S., certified correct the 28th day of June, 1990, a copy of which is annexed hereto, is hereby stopped up and closed to traffic.
3. The Municipal Clerk is hereby authorized and empowered to petition the Minister of Municipal Affairs to abandon the said portion of road more particularly described in section 2 hereof and vest title thereto in the name of The Corporation of the District of Burnaby.

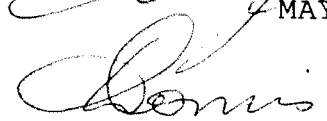
Read a first time this 13th day of AUGUST 1990

Read a second time this 13th day of AUGUST 1990

Read a third time this 13th day of AUGUST 1990

Reconsidered and adopted this 27th day of AUGUST 1990


MAYOR


DEPUTY MUNICIPAL CLERK

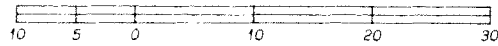
EXPLANATORY PLAN TO ACCOMPANY THE CORPORATION OF THE
 DISTRICT OF BURNABY ROAD CLOSING BYLAW NO. _____
 OVER A PORTION OF ROAD IN DISTRICT LOT 30 GROUP 1
 N.W.D. DEDICATED BY PLAN 3036.

B.C.G.S. 926.026

PLAN _____

DEPOSITED IN THE LAND TITLE OFFICE
 AT NEW WESTMINSTER, B.C.
 THIS _____ DAY OF _____ 19____

SCALE 1:500



All distances are in metres.

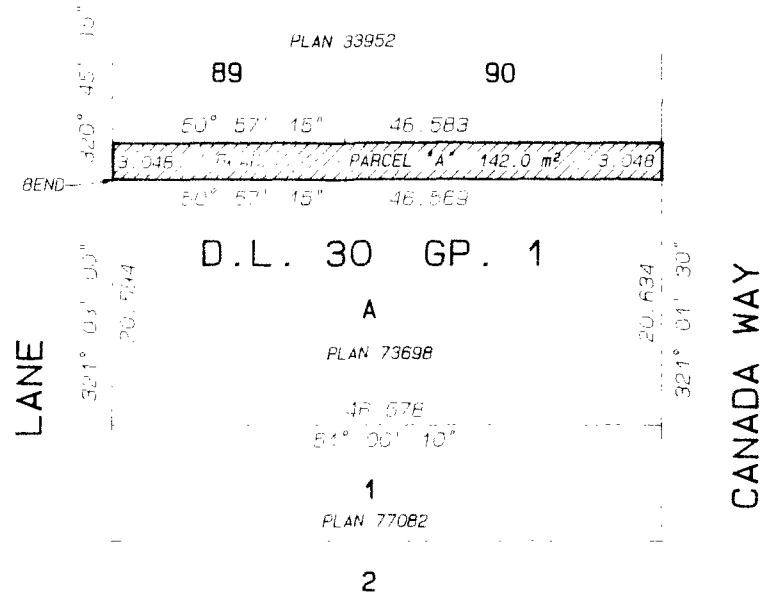
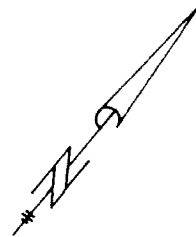
LEGEND

BEARINGS ARE ASTRONOMIC AND
 DERIVED FROM PLAN 73698.

ROAD DIMENSIONS ARE ACCORDING
 TO PLAN 73698.

m² denotes square metres.

~~~~~ denotes Road to  
 be closed.



THE CORPORATION OF THE  
 DISTRICT OF BURNABY

*W. G. Copeland*  
 MAYOR

*R. H. Smith*  
 DEPUTY MUNICIPAL CLERK

HARGRAVES & ASSOCIATES

Professional Land Surveyors  
 7542 Edmonds Street, Burnaby, B.C.  
 V3N 1B4 Tel. 522-1779  
 File No. 1832

This Plan Lies Within  
 The Greater Vancouver Regional District

CERTIFIED CORRECT ACCORDING TO  
 LAND TITLE OFFICE RECORDS,  
 THIS 28TH DAY OF JUNE, 1990

*Richard T. Angerman*  
 B.C.L.S.