

THE CORPORATION OF THE DISTRICT OF BURNABY

BYLAW NO. 9450

A BYLAW to amend Bylaw No. 4742, being
Burnaby Zoning Bylaw 1965 as
amended by Bylaw No. 8542, being
Burnaby Zoning Bylaw 1965,
Amendment Bylaw No. 36, 1986

WHEREAS application for rezoning has been made to the
Council.


AND WHEREAS the Council has held a public hearing
thereon after duly giving notice of the time and place of such
hearing as prescribed by Sections 956 and 957 of the Municipal
Act, R.S.B.C. 1979.


NOW THEREFORE the Council of The Corporation of the
District of Burnaby ENACTS as follows:

1. This Bylaw may be cited as BURNABY ZONING BYLAW 1965,
AMENDMENT BYLAW NO. 48, 1990.
2. The Map (hereinafter called "Map 'A'"), attached to and
forming an integral part of Bylaw No. 4742, being "Burnaby Zoning
Bylaw 1965", and designated as the Official Zoning Map of The
Corporation of the District of Burnaby, is hereby amended
according to the Map (hereinafter called "Map 'B'"), marginally
numbered R.Z. 1817, annexed to this Bylaw, and in accordance with
the explanatory legend, notations, references and boundaries
designated, described, delimited and specified in particularity
shown upon said Map 'B'; and the various boundaries and
districts shown upon said Map 'B' respectively are an amendment
of and in substitution for the respective districts, designated
and marked on said Map 'A' insofar as the same are changed,
modified or varied thereby, and the said Map 'A' shall be deemed

to be and is hereby declared to be amended accordingly and the said Map 'B' is hereby declared to be and shall form an integral part of said Map 'A', as if originally incorporated therein and shall be interpreted accordingly.

Read a first time this	13th	day of	AUGUST	1990
Read a second time this	4th	day of	SEPTEMBER	1990
Read a third time this	10th	day of	SEPTEMBER	1990
Reconsidered and adopted this	17th	day of	SEPTEMBER	1990


MAYOR


CLERK

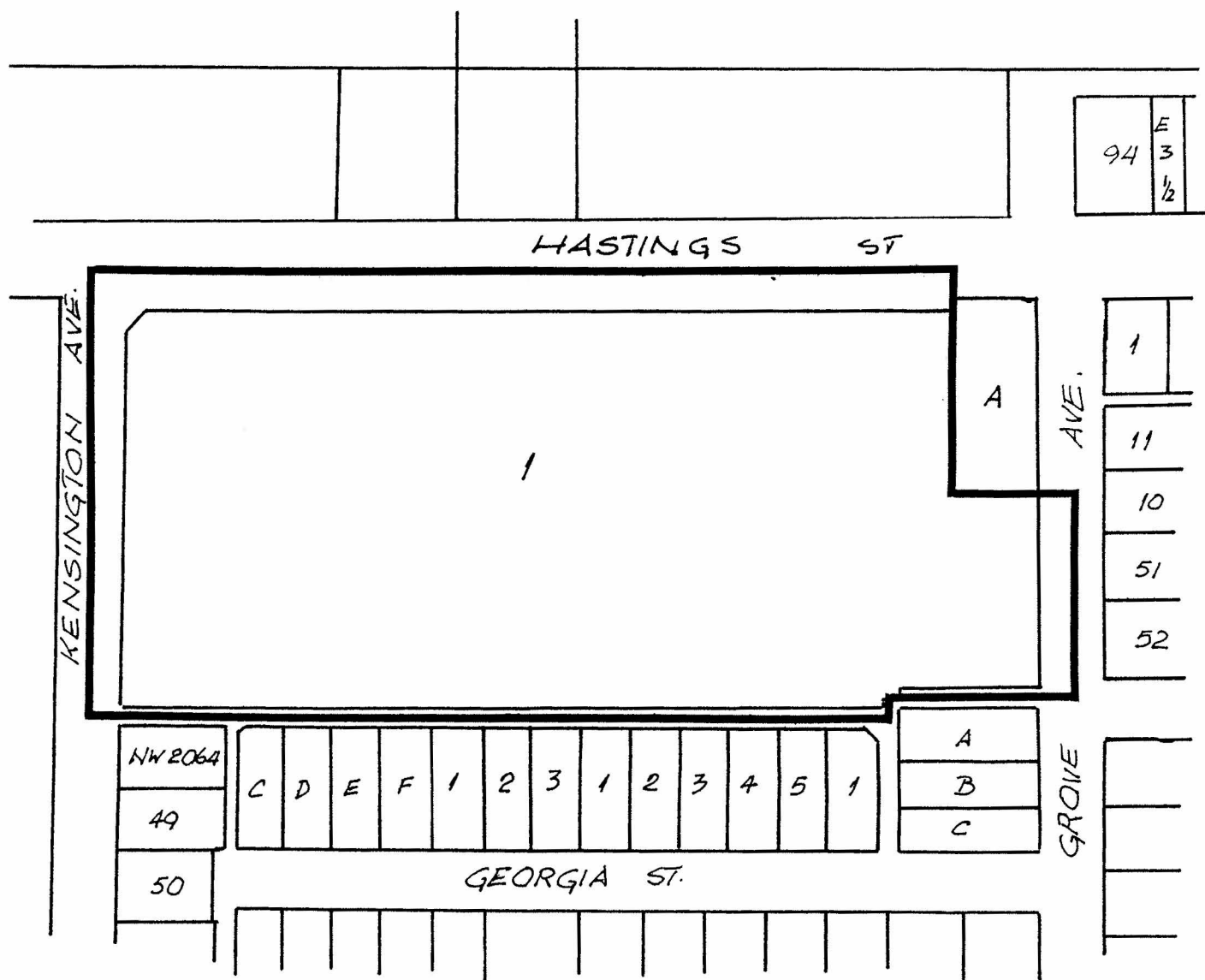
BYLAW NUMBER 9450 BEING A BYLAW TO AMEND RZ #33/90
 BYLAW NUMBER 4742 BEING THE BURNABY ZONING BYLAW 1965

PROPERTY REZONED TO:

MAP "B"

"AMENDED" CD COMPREHENSIVE DEVELOPMENT DISTRICT
 (BASED ON C2a COMMUNITY COMMERCIAL DISTRICT GUIDELINES)

LEGAL: LOT A EXC. E 33' BLK. 3, D.L. 206, GROUP 1, N.W.D.
 PLAN 1071, EXC. PCL. 16571 AND 24586



THE AREA(S) SHOWN ABOVE
 OUTLINED IN BLACK (—)
 IS (ARE) REZONED:

FROM: CD COMPREHENSIVE DEVELOPMENT DISTRICT
 (BASED ON C2 COMMUNITY COMMERCIAL DISTRICT)
 TO: CD COMPREHENSIVE DEVELOPMENT DISTRICT
 (BASED ON C2a COMMUNITY COMMERCIAL DISTRICT
 GUIDELINES)



PLANNING DEPARTMENT	
SCALE	1:2000
DRAWN	E. P.
DATE	1997 01 16

THE CORPORATION OF THE DISTRICT OF BURNABY

OFFICIAL ZONING MAP