

THE CORPORATION OF THE DISTRICT OF BURNABY

BYLAW NO. 9425

A BYLAW to dedicate certain lands within the municipality for public parks at Montrose Park, Barnet Marine Park, Burnaby Mountain Park, Deer Lake Park, Robert Burnaby Park, South Slope Ravine Lands (Kaymar Creek, John Matthews Creek, Froggers Creek, Boundary Creek, Gray Creek and Byrne Creek), Ron McLean Park and Burnaby Fraser Foreshore Park.



WHEREAS section 533 of the Municipal Act empowers the council of a municipality, with the assent of the electors, to dedicate for a public purpose real property owned by the municipality;

NOW THEREFORE the Council of The Corporation of the District of Burnaby ENACTS as follows:

1. This Bylaw may be cited as BURNABY PARK DEDICATION BYLAW 1990.
2. There is hereby dedicated for park and recreation uses of the public that real property owned by the municipality and more particularly described in Schedules A to G inclusive.

Read a first time this 17th day of SEPTEMBER 1990
Read a second time this 01st day of OCTOBER 1990
Read a third time this 22nd day of OCTOBER 1990
Received the assent of the electors this 17th day of NOVEMBER
1990

RECONSIDERED AND ADOPTED this 12th day of NOVEMBER 1991


MAYOR

CLERK

SCHEDULE A - MONTROSE PARK

PID NO.

LEGAL DESCRIPTION

011 001 241	Block 41, D.L. 186, Group 1, N.W.D., Plan 3755
011 001 291	Block 42 except: Parcel A (Reference Plan 6641), D.L. 186, Group 1, N.W.D., Plan 3755

SCHEDULE B - BURNABY MOUNTAIN PARK AND
BURNABY MOUNTAIN CONSERVATION AREA

<u>PID NO.</u>	<u>LEGAL DESCRIPTION</u>
No PID No.	Part (1.15 acres more or less) of the West Half of Lot 214, Group 1 as shown and outlined in red on sketch deposited No. 1251
003 281 205	Lot 5 except: Firstly: part conveyed to Western Power Company Limited, Secondly: part subdivided by Plan 51478, Thirdly: part within heavy outline taken by Highway Statutory Right of Way Plan 62130, D.L. 15, Group 1, N.W.D., Plan 209
003 281 248	Lot 6 except: Firstly: part on Reference Plan 991, Secondly: part within heavy outline taken by Highway Statutory Right of Way Plan 62130, D.L. 15, Group 1, N.W.D., Plan 209
003 281 272	Lot 7 except: Firstly: part on Reference Plan 991, Secondly: part subdivided by Plan 49449, Thirdly: part subdivided by Plan 57602, Fourthly: part within heavy outline taken by Highway Statutory Right of Way Plan 62130, D.L. 15, Group 1, N.W.D., Plan 209
011 947 478	5.091 ha of Lot 15, D.L. 209 and 210, Group 1, N.W.D., Plan 1037 shown outlined on sketch prepared by R.E. Petersen, B.C.L.S. 13th day of June, 1990 attached hereto marked Exhibit #1.
011 947 497	South Half Lot 16, D.L. 209 and 210, Group 1, N.W.D., Plan 1037
003 195 244	District Lot 100 of Group 1, Plan 3065 except Firstly: 360 x 622 feet, Secondly: part on Plan 49449, and Thirdly: part on Plan 51478, N.W.D.
003 142 337	Lot 1 except: Parcel A (Reference Plan 12811), D.L. 143, Group 1, N.W.D., Plan 3075
003 196 259	Lot 4 except: part on Plan 51478, D.L. 148, Group 1, N.W.D., Plan 3075
010 881 956	Lot 1, D.L. 214, Group 1, N.W.D., Plan 3081
003 129 675	Block 1 except: Firstly: part on Reference Plan 6456, Secondly: part on Plan 9377, Thirdly: part on Plan 53168, Fourthly: part on Plan 62613, D.L. 215, Group 1, N.W.D., Plan 3082
010 830 642	Parcel B (Reference Plan 6456), Lot 1, D.L. 215, Group 1, N.W.D., Plan 3082

003 097 498	0.160 ha of Lot 10	all of Block 4, D.L. 207, Group 1, N.W.D.,
003 097 501	0.238 ha of Lot 11	Plan 4032 shown outlined
003 097 528	0.315 ha of Lot 12	on Sketch prepared by R.
003 097 544	0.232 ha of Lot 13	E. Petersen, B.C.L.S.
		12th day of June, 1990,
		attached hereto marked
		Exhibit #2
002 110 768	Lot 14, Block 3, D.L. 207, Group 1, N.W.D.,	
	Plan 4032	
002 110 776	Lot 15, Block 3, D.L. 207, Group 1, N.W.D.,	
	Plan 4032	
002 542 960	Lot 78 of D.L. 100, Group 1, N.W.D., Plan	
	49449	
<hr/>		
002 757 095	Lot 161, D.L. 138, Group 1, N.W.D., Plan 56803	
<hr/>		
003 000 028	Lot 245, D.L. 215 and 216, Group 1, N.W.D.,	
	Plan 62613	
<hr/>		
007 807 198	Lot 22, D.L. 207, Group 1, N.W.D., Plan 74792	
<hr/>		
015 214 567	Lot 1, D.L. 215, Group 1, N.W.D., Plan 83531	
<hr/>		
012 057 771	Lot 18	
012 057 878	Lot 19	
012 057 894	Lot 20	
012 057 916	Lot 21	
012 057 932	Lot 22	
012 057 983	Lot 48	all of D.L. 138, Group 1,
		N.W.D., Plan 1256
012 058 017	Lot 49	
012 058 025	Lot 50	
012 058 050	Lot 52	
<hr/>		
012 705 187	Lot 1	
012 705 195	Lot 2	
012 705 209	Lot 3	all of Block 1, D.L. 209,
		Group 1, N.W.D., Plan 2435
012 705 225	Lot 4	
012 705 233	Lot 5	
012 705 241	Lot 6	
<hr/>		
012 705 551	Lot 7, Block 1, D.L. 209 and 210, Group 1,	
	N.W.D., Plan 2435	

012 705 578	Lot 8, Block 1, D.L. 209 and 210, Group 1, N.W.D., Plan 2435
012 705 705	Lot 9, Block 1, D.L. 209, Group 1, N.W.D., Plan 2435
012 705 756	Lot 10, Block 1, D.L. 209 and 210, Group 1, N.W.D., Plan 2435
012 705 721	West Half Lot 11, Block 1, D.L. 209, Group 1, N.W.D., Plan 2435
012 705 586	East Half Lot 11, Block 1, D.L. 209 and 210, Group 1, N.W.D., Plan 2435
012 705 632	West Half Lot 12, Block 1, D.L. 209 and 210, Group 1, N.W.D., Plan 2435
<hr/>	
012 705 250	East Half Lot 12
012 705 268	Lot 13
012 705 276	Lot 14
012 705 292	Lot 15
012 705 314	Lot 16
012 705 322	Lot 17
012 705 331	Lot 18
<hr/>	
012 705 357	Lot 1, Block 2, D.L. 209, Group 1, N.W.D., Plan 2435
012 705 373	East Half Lot 2, Block 2, D.L. 209, Group 1, N.W.D., Plan 2435
012 705 667	West Half Lot 2, Block 2, D.L. 209 and 210, Group 1, N.W.D., Plan 2435
012 705 675	East Half Lot 3, Block 2, D.L. 209 and 210, Group 1, N.W.D., Plan 2435
012 705 390	West Half Lot 3, Block 2, D.L. 209, Group 1, N.W.D., Plan 2435
<hr/>	
012 705 781	Lot 4
012 705 799	Lot 5
012 705 811	Lot 6
012 705 951	East Half Lot 7
012 705 845	West Half Lot 7
012 705 861	East Half Lot 8
<hr/>	
012 706 019	West Half Lot 8
012 705 993	Lot 9
012 705 403	Lot 10
012 705 411	Lot 11
012 705 420	East Half Lot 12

012 705 896	West Half Lot 12, Block 2, D.L. 209 and 210, Group 1, N.W.D., Plan 2435
012 705 926	East Half Lot 13, Block 2, D.L. 209 and 210, Group 1, N.W.D., Plan 2435
<hr/>	
012 705 454	West Half Lot 13, Block 2, D.L. 209, Group 1, N.W.D., Plan 2435
<hr/>	
012 705 942	Lot 14, Block 2, D.L. 209 and 210, Group 1, N.W.D., Plan 2435
<hr/>	
012 705 471	Lot 15
012 705 497	Lot 16
012 705 519	Lot 17
012 705 527	Lot 18
<hr/>	
012 802 671	North Half Lot 12
012 752 762	South Half Lot 12
012 787 426	North Half Lot 13
012 802 735	South Half Lot 13
002 599 686	Lot 14
002 599 759	North Half Lot 15
012 802 808	South Half Lot 15
012 802 891	Lot 16
012 758 884	Lot 17
<hr/>	
012 777 579	Lot 7
012 803 171	Lot 8
012 803 251	Lot 9
012 803 294	Lot 10
012 753 858	North Half Lot 11
012 785 610	South Half Lot 11
012 803 308	Lot 12
012 790 478	North Half Lot 13
002 568 969	South Half Lot 13
012 758 957	North Half Lot 14
012 784 796	South Half Lot 14
012 777 609	Lot 15
012 777 641	Lot 16

all of Block 2, D.L. 209,
Group 1, N.W.D., Plan 2435

all of Block 3, D.L. 208,
Group 1, N.W.D., Plan 2501

all of Block 4, D.L.
208, Group 1, N.W.D.,
Plan 2501

012 803 341 Lot 17
012 788 732 Lot 18
012 753 921 Lot 19
012 777 650 Lot 20
012 777 692 Lot 21
012 777 722 North Half Lot 22

012 800 139 North Half Lot 4
003 098 788 South Half Lot 4
003 098 842 Lot 5
002 427 893 Lot 6
012 753 696 North Half Lot 7
012 800 147 South Half Lot 7
012 787 639 Lot 8
012 787 655 Lot 9
003 098 877 Lot 10
012 754 145 Lot 11
003 098 915 Lot 12
003 099 571 North Half Lot 13
002 507 382 South Half Lot 13
003 099 610 Lot 14
003 099 661 Lot 15
003 099 733 North Half Lot 16
012 754 226 South Half Lot 16
012 791 181 North Half Lot 17
012 800 198 South Half Lot 17
012 800 236 North Half Lot 18
003 099 814 South Half Lot 18
012 754 307 North Half Lot 19
003 100 189 South Half Lot 19
012 758 990 North Half Lot 20
003 098 478 South Half Lot 20
012 800 252 North Half Lot 21
003 100 197 South Half Lot 21
003 100 219 Lot 22
003 100 260 North Half Lot 23

all of Block 5, D.L.
208, Grp. 1, N.W.D.
Plan 2501

012 751 464 South Half Lot 23

012 800 261 Lot 24

012 776 611 Lot 2

012 800 325 Lot 3

012 754 765 North Half Lot 4

012 776 661 South Half Lot 4

012 800 333 Lot 5

002 568 926 North Half Lot 6

012 759 015 South Half Lot 6

012 776 700 North Half Lot 7

012 759 031 South Half Lot 7

012 776 751 Lot 8

012 788 155 Lot 9

012 776 777 Lot 10

012 776 807 Lot 11

012 776 866 Lot 12

012 800 376 North Half Lot 13

012 776 912 South Half Lot 13

012 800 449 Lot 14

all of Block 6, D.L. 208,
Group 1, N.W.D., Plan
2501

012 776 947 North Half Lot 15

012 800 465 South Half Lot 15

012 800 481 North Half Lot 16

012 776 971 South Half Lot 16

012 776 980 Lot 17

012 753 661 Lot 18

012 777 064 Lot 19

012 777 111 Lot 20

012 777 170 Lot 21

012 777 226 Lot 22

012 800 511 North Half Lot 23

012 777 242 South Half Lot 23

012 777 323 North Half Lot 24

012 800 562 South Half Lot 24

012 800 589 North Half Lot 25

012 777 391 South Half Lot 25
002 568 896 Lot 26

003 110 567 Lot 2
003 100 605 Lot 3
003 110 630 Lot 4
003 110 656 Lot 5
003 110 681 Lot 6
012 759 074 Lot 7
003 110 702 Lot 8
012 787 451 North Half Lot 9
003 110 737 South Half Lot 9
003 110 761 North Half Lot 10
012 787 493 South Half Lot 10
012 796 221 North Half Lot 11
003 099 113 South Half Lot 11
003 110 770 North Half Lot 12
012 796 280 South Half Lot 12
012 791 229 North Half Lot 13
012 759 279 South Half Lot 13
003 110 796 North Half Lot 14
012 759 295 South Half Lot 14
003 110 966 Lot 15
003 110 974 Lot 16
003 111 008 Lot 17
003 111 024 North Half Lot 18
012 791 270 South Half Lot 18
012 791 326 North Half Lot 19
003 111 032 South Half Lot 19
003 112 021 Lot 20
012 754 919 North Half Lot 21
012 759 309 South Half Lot 21
008 204 331 Lot 27
008 204 349 Lot 28
008 204 373 Lot 29

all of Block 7, D.L. 208
Group 1, N.W.D., Plan
2501

012 800 619	Lot 1	
012 800 643	North Half Lot 2	
012 766 917	South Half Lot 2	
012 759 767	North Half Lot 3	
012 800 694	South Half Lot 3	
012 766 992	Lot 4	
012 800 724	Lot 5	
012 767 026	Lot 6	
012 787 680	Lot 7	
012 767 069	Lot 8	
012 800 775	Lot 9	
012 767 093	North Half Lot 10	
012 800 791	South Half Lot 10	
012 759 830	North Half Lot 11	
012 788 759	South Half Lot 11	
003 099 211	North Half Lot 12	
012 767 123	South Half Lot 12	all of Block 8, D.L. 208
012 759 848	Lot 13	Group 1, N.W.D., Plan
012 767 140	Lot 14	2501
012 752 631	North Half Lot 15	
012 767 174	South Half Lot 15	
012 767 221	Lot 16	
012 767 280	Lot 17	
012 767 328	Lot 18	
012 776 173	Lot 19	
012 776 220	Lot 20	
012 776 262	Lot 21	
012 776 297	Lot 22	
012 790 524	North Half Lot 23	
012 776 335	South Half Lot 23	
012 800 830	Lot 24	
012 800 848	Lot 25	
012 753 611	Lot 26	
<hr/>		
003 196 895	Lot 1	
003 196 976	Lot 2	

003 197 018	Lot 3	
003 197 034	Lot 4	
003 099 482	Lot 5	
003 197 069	Lot 6	
003 194 264	Lot 7	
003 194 272	Lot 8	
012 784 991	North Half Lot 9	
012 788 775	South Half Lot 9	
002 568 586	North Half Lot 10	
012 800 881	South Half Lot 10	
012 816 523	North Half Lot 11	
003 194 302	South Half Lot 11	
003 194 281	Lot 12	
003 194 299	Lot 13	all of Block 9, D.L. 208
002 748 908	East Half Lot 14	Group 1, N.W.D., Plan
002 748 924	West Half Lot 14	2501
012 788 791	Lot 15	
003 194 787	Lot 16	
012 755 443	Lot 17	
012 800 902	Lot 18	
012 755 494	Lot 19	
012 755 524	Lot 20	
012 755 559	Lot 21	
003 194 817	Lot 22	
012 755 583	North Half Lot 23	
003 194 876	South Half Lot 23	
003 194 884	Lot 24	
012 755 613	North Half Lot 25	
003 194 922	South Half Lot 25	
012 759 856	Lot 26	
<hr/>		
012 764 167	Lot 1	
003 099 288	North Half Lot 2	
012 800 911	South Half Lot 2	
012 764 230	North Lot Lot 3	

012 755 800 South Half Lot 3
012 764 272 Lot 4
012 764 337 Lot 5
012 816 591 North Half Lot 6
012 752 487 South Half Lot 6
012 764 353 North Half Lot 7
012 816 655 South Half Lot 7
012 755 869 North Half Lot 8
012 764 388 South Half Lot 8
012 788 180 North Half Lot 9
012 764 434 South Half Lot 9
012 755 982 North Half Lot 10
012 788 198 South Half Lot 10
012 815 667 North Half Lot 11
012 753 572 South Half Lot 11
012 787 558 Lot 12
012 764 493 Lot 13
012 764 515 East Half Lot 14
012 800 945 West Half Lot 14
012 787 591 Lot 15
012 800 961 Lot 16
012 764 582 Lot 17
012 764 647 Lot 18
012 764 671 Lot 19
012 764 698 Lot 20
012 759 864 North Half Lot 21
012 764 744 South Half Lot 21
012 764 779 Lot 22
012 764 795 Lot 23
012 800 988 North Half Lot 24
012 764 841 South Half Lot 24
012 764 906 Lot 25
012 764 973 Lot 26

all of Block 10, D.L.
208, Group 1, N.W.D.,
Plan 2501

012 777 994 Lot 1
012 778 028 Lot 2

012 778 079	Lot 3	
012 788 201	Lot 4	
012 778 117	Lot 5	
012 778 141	Lot 6	
012 778 150	Lot 7	
012 778 168	Lot 8	
012 760 021	Lot 9	
012 760 048	Lot 10	
012 790 575	North Half Lot 11	
012 795 364	South Half Lot 11	
012 800 996	Lot 12	
012 785 041	Lot 13	
012 760 102	East Half Lot 14	
012 790 605	West Half Lot 14	
012 791 351	North Half Lot 15	
012 778 192	South Half Lot 15	
012 788 716	North Half Lot 16	all of Block 11, D.L. 208, Group 1, N.W.D., Plan 2501
012 753 521	South Half Lot 16	
012 760 145	North Half Lot 17	
003 099 351	South Half Lot 17	
012 760 188	North Half Lot 18	
012 753 548	South Half Lot 18	
012 801 003	Lot 19	
012 752 355	North Half Lot 20	
003 099 971	South Half Lot 20	
012 778 206	North Half Lot 21	
012 815 471	South Half Lot 21	
012 815 608	North Half Lot 22	
012 778 214	South Half Lot 22	
012 801 071	North Half Lot 23	
012 790 630	South Half Lot 23	
012 790 699	North Half Lot 24	
012 801 194	South Half Lot 24	
012 756 113	North Half Lot 25	
012 760 331	South Half Lot 25	

012 788 244	Lot 26	
<hr/>		
003 100 201	Lot 1	
012 786 870	Lot 2	
012 786 896	Lot 3	
012 760 536	North Half Lot 4	
012 801 283	South Half Lot 4	
012 786 926	Lot 5	
012 786 942	Lot 6	
012 786 951	Lot 7	
012 786 993	Lot 8	
012 787 043	Lot 9	
012 785 113	North Half Lot 10	
012 801 313	South Half Lot 10	
012 756 202	North Half Lot 11	
003 004 864	South Half Lot 11	
012 787 132	Lot 12	
012 801 372	Lot 13	
012 787 183	Lot 14	all of Blk. 12, D.L.
012 787 213	Lot 15	208, Group 1, N.W.D.,
		Plan 2501
012 787 264	North Half Lot 16	
012 753 459	South Half Lot 16	
012 787 299	Lot 17	
012 787 337	Lot 18	
012 787 370	Lot 19	
012 752 282	North Half Lot 20	
012 787 400	South Half Lot 20	
012 787 434	Lot 21	
012 787 469	North Half Lot 22	
012 787 736	South Half Lot 22	
012 801 399	Lot 23	
012 761 737	North Half Lot 24	
012 787 507	South Half Lot 24	
012 787 531	Lot 25	
012 761 745	Lot 26	
<hr/>		

003 004 732	Lot 1	
003 004 741	Lot 2	
003 004 759	Lot 3	
003 004 767	Lot 4	
003 004 929	Lot 5	
003 004 953	Lot 6	
003 004 961	Lot 7	
012 816 132	Lot 8	
012 786 632	North Half Lot 9	
012 785 644	South Half Lot 9	
012 801 470	Lot 10	
012 786 667	North Half Lot 11	
012 785 661	South Half Lot 11	
002 568 608	Lot 12	
012 788 767	Lot 13	
012 788 783	Lot 14	
012 788 805	Lot 15	
012 752 215	Lot 16	all of Blk. 13, D.L. 208, Group 1, N.W.D., Plan 2501
003 100 057	North Half Lot 17	
012 801 518	South Half Lot 17	
012 786 705	Lot 18	
012 786 772	Lot 19	
012 786 802	North Half Lot 20	
012 816 078	South Half Lot 20	
002 568 632	North Half Lot 21	
003 170 373	South Half Lot 21	
012 788 813	North Half Lot 22	
012 762 539	South Half Lot 22	
012 786 837	Lot 23	
012 795 399	North Half Lot 24	
012 797 391	South Half Lot 24	
012 797 456	Lot 25	
003 170 276	Lot 26	
<hr/>		
012 761 753	Lot 1	

012 817 341	North Half Lot 2	
012 797 481	South Half Lot 2	
012 761 800	North Half Lot 3	
012 817 384	South Half Lot 3	
002 631 121	Lot 4	
012 797 545	Lot 5	
012 795 402	North Half Lot 6	
012 761 818	South Half Lot 6	
012 797 588	Lot 7	
012 791 407	Lot 8	
012 786 977	North Half Lot 9	
012 762 601	South Half Lot 9	
012 787 825	North Half Lot 10	
012 752 142	South Half Lot 10	
012 788 287	Lot 11	
012 788 317	Lot 12	
012 788 325	Lot 13	
002 600 927	East Half Lot 14	
012 797 618	West Half Lot 14	all of Blk. 14, D.L. 208, Group 1, N.W.D., Plan 2501
002 602 334	Lot 15	
002 600 668	Lot 16	
012 817 244	North Half Lot 17	
012 797 634	South Half Lot 17	
012 778 273	North Half Lot 18	
012 797 677	South Half Lot 18	
012 797 731	North Half Lot 19	
012 762 628	South Half Lot 19	
012 763 551	North Half Lot 20	
002 568 624	North Half Lot 21	
012 763 616	South Half Lot 21	
012 753 394	North Half Lot 22	
012 778 290	South Half Lot 22	
003 100 111	North Half Lot 23	
012 787 850	South Half Lot 23	
No PID No.	North Half Lot 24	

012 763 667 South Half Lot 24
012 797 758 North Half Lot 25
012 778 371 South Half Lot 25
012 785 741 Lot 26

002 672 146 Lot 3
003 687 244 Lot 4
003 100 146 North Half Lot 10
015 946 754 Lot 11
002 704 366 Lot 12
012 797 782 Lot 13
012 797 804 Lot 14
012 763 730 West Half Lot 15
012 761 834 East Half Lot 15
003 097 781 North Half Lot 16
012 787 027 South Half Lot 16
012 788 333 Lot 17
012 761 851 Lot 18
003 086 364 North Half Lot 19
012 787 116 South Half Lot 19
012 788 341 Lot 20
003 086 381 North Half Lot 21
003 100 499 South Half Lot 21
012 797 839 Lot 22
012 795 429 Lot 23
003 086 402 Lot 24
012 816 221 Lot 25
012 816 272 Lot 26

all of Blk. 15, D.L.
208, Group 1, N.W.D.,
Plan 2501

012 795 747 North Half Lot 7
012 798 011 South Half Lot 7
012 752 061 Lot 8
012 785 806 Lot 9
012 795 445 North Half Lot 10
012 788 384 South Half Lot 10
012 795 461 Lot 11

012 798 096	Lot 12	
012 785 253	East Half Lot 13	all of Blk. 16, D.L.
012 798 185	West Half Lot 13	208, Group 1, N.W.D., Plan 2501
012 798 231	Lot 14	
012 788 414	Lot 16	
012 788 431	Lot 17	
012 761 877	Lot 18	
012 761 885	Lot 19	
012 761 893	Lot 20	
012 816 451	Lot 21	
012 761 907	Lot 22	
<hr/>		
012 798 266	East Half Lot 1	
012 761 931	West Half Lot 1	
012 761 958	East Half Lot 2	
012 798 304	West Half Lot 2	
012 761 966	East Half Lot 3	
012 788 473	West Half Lot 3	
012 788 520	Lot 4	
002 568 713	Lot 5	
012 785 881	Lot 6	
012 761 974	North Half Lot 7	
012 785 903	South Half Lot 7	
012 761 991	Lot 8	
012 762 008	Lot 9	
003 100 588	North Half Lot 10	all of Blk. 17, D.L.
012 785 938	South Half Lot 10	208, Group 1, N.W.D., Plan 2501
012 815 438	North Half Lot 11	
003 100 642	South Half Lot 11	
012 785 989	Lot 12	
003 101 037	Northerly Half Lot 13	
012 788 881	South 33' Lot 13	
012 795 470	Lot 14	
012 795 488	Lot 15	
012 785 997	Lot 16	
012 786 012	North Half Lot 17	

003 100 758 South Half Lot 17

012 795 496 Lot 18

012 786 063 South Half Lot 19

012 798 339 Lot 20

012 751 758 Lot 1

012 789 283 Lot 2

012 789 291 Lot 3

012 798 380 Lot 4

012 788 554 Lot 5

012 795 518 Lot 6

012 798 428 Lot 7

012 795 569 North Half Lot 8

012 791 571 South Half Lot 8

012 753 297 North Half Lot 9

012 791 610 South Half Lot 9

012 798 461 Lot 10

012 798 495 Lot 11

012 751 880 Lot 12

012 787 191 Lot 13

012 787 230 North Half Lot 14

012 798 533 South Half Lot 14

012 787 281 Lot 15

012 787 353 Lot 16

012 798 576 North Half Lot 17

002 568 802 South Half Lot 17

012 798 614 Lot 18

002 568 772 North Half Lot 19

012 798 649 South Half Lot 19

012 778 427 North Half Lot 20

002 595 729 South Half Lot 20

012 789 356 Lot 1

012 789 372 Lot 2

012 789 381 Lot 3

012 795 593 Lot 4

all of Blk. 18, D.L.
208, Group 1, N.W.D.,
Plan 2501

012 791 709	North Half Lot 5	
002 779 846	South Half Lot 5	
012 763 756	North Half Lot 6	
012 791 733	South Half Lot 6	
012 763 781	North Half Lot 7	
012 778 443	South Half Lot 7	
012 795 801	Lot 8	
012 795 836	Lot 9	
012 798 665	Lot 10	
012 752 002	North Half Lot 11	all of Blk. 19, D.L. 208, Group 1, N.W.D., Plan 2501
012 798 690	South Half Lot 11	
012 795 879	Lot 12	
012 788 597	North 51' Lot 13	
012 798 720	Lot 13 except: The North 51'	
012 763 829	North Half Lot 14	
012 790 761	South Half Lot 14	
012 790 818	Lot 15	
012 790 869	North Half Lot 16	
012 750 964	South Half Lot 16	
012 798 746	Lot 17	
012 798 789	Lot 18	
012 798 878	Lot 19	
012 798 908	Lot 20	
<hr/>		
012 778 460	Lot 1	
012 796 328	Lot 2	
012 816 477	Lot 3	
012 778 494	Lot 4	
012 751 677	North Half Lot 5	
012 796 361	South Half Lot 5	
012 751 626	Lot 6	
012 796 387	Lot 7	
012 795 615	Lot 8	
012 778 516	North Half Lot 9	
012 795 640	South Half Lot 9	

012 751 006	North Half Lot 10	
012 763 918	South Half Lot 10	
012 796 409	North Half Lot 11	all of Blk. 20, D.L.
012 751 049	South Half Lot 11	208, Group 1, N.W.D., Plan 2501
012 796 425	North 51' Lot 12	
012 795 763	South 33' Lot 12	
012 781 886	North Half Lot 13	
012 785 407	South Half Lot 13	
012 781 959	Lot 14	
012 782 025	North Half Lot 15	
002 568 748	South Half Lot 15	
012 796 441	Lot 16	
012 751 103	North Half Lot 17	
012 796 484	South Half Lot 17	
012 796 514	Lot 18	
012 796 565	Lot 19	
012 796 603	Lot 20	
<hr/>		
012 782 254	Lot 1	
012 789 437	Lot 2	
012 763 942	West Half Lot 3	
012 789 453	East Half Lot 3	
012 782 271	Lot 4	
012 782 351	Lot 5	
012 782 394	Lot 6	
012 796 638	Lot 7	
012 751 171	Lot 8	
012 782 441	Lot 9	
012 796 662	North Half Lot 10	
012 751 227	South Half Lot 10	
012 789 461	North Half Lot 11	
012 757 900	South Half Lot 11	all of Blk. 21, D.L.
012 796 727	North Half Lot 12	208, Group 1, N.W.D., Plan 2501
012 782 483	South Half Lot 12	
012 782 556	North Half Lot 13	

012 796 794 South Half Lot 13
012 796 859 North Half Lot 14
012 789 496 South Half Lot 14
012 782 611 Lot 15
012 782 670 Lot 16
012 782 718 Lot 17
012 751 294 North Half Lot 18
012 782 777 South Half Lot 18
012 782 874 Lot 19
012 764 019 Lot 20

012 783 366 Lot 1
012 783 404 Lot 2
012 783 544 Lot 3
012 796 875 Lot 4
012 783 595 North Half Lot 5
012 759 911 South Half Lot 5
012 783 650 North Half Lot 6
012 817 422 South Half Lot 6
012 783 714 Lot 7
012 783 765 Lot 8
012 759 953 Lot 9
012 783 838 North Half Lot 10
012 796 921 South Half Lot 10
012 783 871 Lot 11
012 783 897 Lot 12
012 788 619 North 51' Lot 13
012 783 901 South 33' Lot 13
012 783 919 Lot 14
012 796 981 Lot 15
012 787 621 Lot 16
012 783 935 Lot 17
012 764 060 Lot 18
012 764 108 North Half Lot 19
012 783 943 South Half Lot 19

all of Block 22, D.L.
208, Group 1, N.W.D.,
Plan 2501

012 783 960	Lot 20	
<hr/>		
012 817 104	East Half Lot 2	
012 797 031	Lot 4	
003 101 720	North Half Lot 5	
012 797 090	South Half Lot 5	
003 101 754	Lot 6	
012 753 238	Lot 7	
003 169 901	Lot 8	
003 169 944	North Half Lot 9	
012 797 120	South Half Lot 9	
003 169 952	Lot 10	all of Blk. 23, D.L.
003 169 979	Lot 11	208, Group 1, N.W.D.,
		Plan 2501
003 170 021	Lot 12	
003 101 801	Lot 13	
003 101 827	Lot 14	
003 101 860	Lot 15	
003 112 063	Lot 16	
003 170 713	Lot 17	
012 816 990	Lot 18	
012 817 058	Lot 19	
002 595 656	Lot 20	
<hr/>		
003 111 091	Lot 1	
003 111 121	East Half Lot 2	
012 791 784	West Half Lot 2	
012 797 162	Lot 3	
012 816 957	Lot 4	
012 817 112	Lot 11	
012 757 942	Lot 12 except: South 33'	
012 817 155	South 33' Lot 12	all of Blk. 24, D.L.
012 797 189	Lot 17	208, Group 1, N.W.D.,
		Plan 2501
012 797 227	Lot 18	
012 797 243	Lot 19	
003 111 199	Lot 20	

008 204 420 Lot 21

008 204 438 Lot 22

008 204 446 Lot 23

009 257 373 Lot A, D.L. 208, Group 1, N.W.D., Plan 22639

SCHEDULE C - DEER LAKE PARK

<u>PID NO.</u>	<u>LEGAL DESCRIPTION</u>
012 840 807	Parcel A (Plan with fee deposited 1416F), D.L. 85, Group 1, N.W.D.
001 178 024	Parcel D (Explanatory Plan 4272), D.L. 85, Group 1, N.W.D.
001 178 016	Parcel W (Explanatory Plan 255), D.L. 85, Group 1, N.W.D.
<hr/>	
002 438 500	Parcel D (Reference Plan 3257) Blocks 4 and 5 except: Firstly: Part Parcel C (Explanatory Plan 12891); Secondly: Part subdivided by Plan 45494; of D.L. 79, Group 1, N.W.D., Plan 536
002 652 111	Parcel C (Explanatory Plan 12891), Blocks 4 and 5, D.L. 79, Group 1, N.W.D., Plan 536
002 438 623	East 243' Block 4 except: Firstly: Parcel A (Reference Plan 3333); Secondly: Parcel B (Reference Plan 4905); Thirdly: Part subdivided by Plan 15631; Fourthly: Part subdivided by Plan 45494; D.L. 79, Group 1, N.W.D., Plan 536
004 493 311	Block 3 except: Part subdivided by Plan 26865, D.L. 79, Group 1, N.W.D., Plan 536
004 493 290	Block 2 except: Part subdivided by Plan 26865, D.L. 79, Group 1, N.W.D., Plan 536
003 124 355	Lot 9 except: Part subdivided by Plan 71254, D.L. 33, Group 1, N.W.D., Plan 944
<hr/>	
003 090 558	Lot 7 except: the South 10'
003 090 302	Lot 8
011 995 009	Lot 16
011 995 025	Lot 26
011 995 041	Lot 27
011 995 076	Lot 28 D.L. 93, Group 1, N.W.D. Plan 1127
011 995 092	Lot 29
011 995 190	Lot 38
006 062 041	Lot 32
006 062 083	Lot 33
011 995 351	Lot 39
011 995 378	Lot 40
011 995 386	Lot 41

012 011 959	Lot 1	
012 011 967	Lot 6	D.L. 92, Group 1, N.W.D. Plan 1146
012 011 983	Lot 7	
<hr/>		
012 066 397	South Half of Lot 38	
012 066 435	Lot 39	
012 066 460	Lot 40	D.L. 83, Group 1, N.W.D. Plan 1267
012 066 541	Lot 54	
012 066 567	Lot 55	
<hr/>		
012 193 631	Lot 2	
012 193 658	Lot 3	
012 193 666	Lot 9	
012 193 674	Lot 15	
012 193 682	Lot 16	
012 193 691	Lot 17	
012 193 704	Lot 18	
012 193 712	Lot 19	Block 2, D.L. 93, Group 1, N.W.D., Plan 1462
012 193 771	Lot 4	
012 193 798	Lot 5	
012 193 810	Lot 6	
012 193 836	Lot 7	
012 193 780	Lot 8	
012 193 828	Lot 10	
012 193 879	Lot 11	
012 193 887	Lot 12	
012 193 933	Lot 13	
012 193 941	Lot 14	
<hr/>		
012 246 301	Lot A, Block 18, D.L. 82, Group 1, N.W.D., Plan 1626	
012 246 271	Lot B, Block 17, D.L. 82, Group 1, N.W.D., Plan 1626	
012 246 085	North Half Lot B, Block 12, D.L. 82, Group 1, N.W.D., Plan 1626	
012 246 051	North Half Lot A, Block 12, D.L. 82, Group 1, N.W.D., Plan 1626	
012 245 950	Lot B except: The West 33'; Block 11, D.L. 82, Group 1, N.W.D., Plan 1626	

012 246 239 Lot A, Block 10, D.L. 82, Group 1, N.W.D.,
Plan 1626

012 246 255 Lot B, Block 10, D.L. 82, Group 1, N.W.D.,
Plan 1626

012 246 182 Lot A, Block 9, D.L. 82, Group 1, N.W.D., Plan
1626

012 246 191 Lot B, Block 9, D.L. 82, Group 1, N.W.D., Plan
1626

012 419 532 Lot 1

012 419 559 Lot 2

002 679 485 Lot 3 D.L. 32, Group 1,
N.W.D., Plan 1916

002 679 515 Lot 4

001 450 832 Lot 5

012 419 583 Lot 6

003 145 174 Lot 7

000 641 421 Parcel A (407024E) Lot 6, D.L. 79, Group 1,
N.W.D., Plan 1995

000 445 410 Lot 5 except: Southerly 78', D.L. 79, Group 1,
N.W.D., Plan 1995

012 644 374 Lot 1

012 644 463 Lot 2

012 645 141 Lot 3

012 645 532 Lot 4

012 645 699 Lot 5

012 645 176 Lot 15

012 645 184 Lot 16

012 645 214 Lot 17

012 645 541 Lot 18

012 645 605 Lot 19

016 099 231 Lot 20

016 099 249 Lot 21 D.L. 82, Group 1, N.W.D.
Plan 2438

012 645 222 Lot 22

012 645 630 Lot 23

012 645 648 Lot 24

012 645 664 Lot 25

012 645 257 Lot 26

012 645 290 Lot 27

012 645 338 Lot 28
012 645 389 Lot 29
012 645 702 Lot 30
012 645 397 Lot 31

012 662 429 Lot 1
012 662 445 Lot 2
012 662 453 Lot 3 D.L. 82, Group 1, N.W.D.,
Plan 2511
012 662 518 Lot 7
012 662 526 Lot 8
012 662 542 Lot 9

012 880 116 Lot 1
012 880 124 Lot 2
012 880 141 Lot 3
012 880 167 Lot 4
012 880 175 Lot 5
012 880 191 Lot 6 D.L. 82, Group 1, N.W.D.,
Plan 2618
012 880 205 Lot 7
012 880 213 Lot 8
012 880 221 Lot 9
012 880 230 Lot 10
012 880 248 Lot 11
012 880 264 Lot 12

003 173 089 Lot 1
003 140 695 Lot 2 D.L. 93, Group 1, N.W.D.,
Plan 2698
003 140 555 Lot 3
003 173 143 Lot 4

010 889 957 Lot C, D.L. 93, Group 1, N.W.D., Plan 3245
003 141 161 Lot D, D.L. 93, Group 1, N.W.D., Plan 3245

003 139 794 Lot A except: The North 297.4', D.L. 93, Group
1, N.W.D., Plan 3248

010 943 285	Lot A	
010 943 307	Lot B	D.L. 82, Group 1, N.W.D., Plan 3311
010 943 340	Lot C	
<hr/>		
011 109 904	Lot D, D.L. 82, Group 1, N.W.D.,	Plan 5009
<hr/>		
007 527 241	Lot B, D.L. 79, Group 1, N.W.D.,	Plan 6642
<hr/>		
007 525 931	North 225' Lot C, D.L. 79, Group 1, N.W.D.,	Plan 6884
011 095 067	Lot C except: North 225', D.L. 79, Group 1,	N.W.D., Plan 6884
<hr/>		
010 286 918	Lot 2, D.L. 32 and 82, Group 1, N.W.D.,	Plan 17168
<hr/>		
009 315 454	Lot 41, D.L. 82, Group 1, N.W.D.,	Plan 24175
<hr/>		
008 860 068	Lot 28, D.L. 79, Group 1, N.W.D.,	Plan 26865
<hr/>		
008 467 447	Lot 161, D.L. 85, Group 1, N.W.D.,	Plan 37715
<hr/>		
003 121 810	Lot 263 except: Part subdivided by Plan 71254,	D.L. 33, Group 1, N.W.D., Plan 44203
<hr/>		
003 141 942	Lot 311, D.L. 33, Group 1, N.W.D.,	Plan 64787
<hr/>		
006 082 645	Lot A, D.L. 85, Group 1, N.W.D.,	Plan 73494
<hr/>		
011 030 356	Parcel 1, D.L. 79 and 85, Group 1, N.W.D.,	Reference Plan 77594
<hr/>		
015 013 189	Lot 3 D.L. 85, Group 1, N.W.D.,	Plan 83065
<hr/>		
002 683 873	Lot 2 of D.L. 85, Group 1, Plan 9815 except	part subdivided by Plan 54188, N.W.D.

SCHEDULE D - ROBERT BURNABY PARK

<u>PID NO.</u>	<u>LEGAL DESCRIPTION</u>
011 907 894	Lot 1 except: Firstly: Part subdivided by Plan 14074 Secondly: Part subdivided by Plan 16183 Thirdly: Part subdivided by Plan 16882, Block 30, D.L. 27, Group 1, N.W.D., Plan 697
011 907 908	Lot 2, Block 30, D.L. 27, Group 1, N.W.D., Plan 697
011 907 916	Lot 3, Block 30, D.L. 27, Group 1, N.W.D., Plan 697
001 923 731	Block A except Firstly: Part dedicated road on Plan 69981; Secondly: Part subdivided by Plan 75734; D.L. 89, Group 1, N.W.D., Plan 4517
003 312 771	Lot 383, D.L. 90, Group 1, N.W.D., Plan 66534
002 076 268	Lot 69, D.L. 89, Group 1, N.W.D., Plan 69981
009 326 014	Lot 1, D.L. 90, Group 1, N.W.D., Plan 75734

SCHEDULE E - SOUTH SLOPE RAVINE LANDS

KAYMAR CREEK RAVINE PARK

<u>PID NO.</u>	<u>LEGAL DESCRIPTION</u>
003 201 562	The East 220 Feet of Lot 3, D.L. 175, Group 1, N.W.D., Plan 588
012 092 134	Lot 4
012 092 151	Lot 5 all of Block 2, D.L. 175, Group 1, N.W.D., Plan 1332
003 184 374	Lot 6 except: Part on Reference Plan 13018;
012 091 910	Lot 6
012 091 936	Lot 7
003 141 071	Lot 8
012 091 944	Lot 9
012 091 952	Lot 10
012 091 979	Lot 11
012 092 002	Lot 12
003 143 376	Lot 13 all of Block 1, District Lot 175, Group 1, New Westminster District, Plan 1332
003 143 511	Lot 14
003 143 627	Lot 15
003 143 694	Lot 16
003 143 830	Lot 17
003 142 850	Lot 18
003 142 965	Lot 19
003 143 058	Lot 20
003 143 210	Lot 21
012 092 126	Lot 22
012 092 045	Lot 23
003 085 481	Lot A except: Part on Reference Plan 13018, D.L. 175, Group 1, N.W.D., Plan 3316
003 186 113	Easterly 187 feet of Lot 3, D.L. 175, Group 1, N.W.D., Plan 3668

009 921 249	Block H except: firstly: Parcel J (Explanatory Plan 13708) secondly: Parcel One (Explanatory Plan 15714); D.L. 175, Group 1, N.W.D., Plan 14241
010 003 991	Lot 1, D.L. 175, Group 1, N.W.D., Plan 14572
010 004 017	Lot 3, D.L. 175, Group 1, N.W.D., Plan 14572
002 462 796	Lot 152 except: part subdivided by Plan 46558; D.L. 175, Group 1, N.W.D., Plan 25291
003 109 356	North Half of the North East Quarter, D.L. 175, Group 1 Except: Firstly: Part subdivided by Plan 4348, Secondly: Part subdivided by Plan 27269, Thirdly: Part subdivided by Plan 29174, N.W.D.

JOHN MATHEWS CREEK RAVINE PARK

<u>PID NO.</u>	<u>LEGAL DESCRIPTION</u>
011 931 523	West half of Lot 8 except: Part subdivided by Plan 27749, D.L. 159, Group 1, N.W.D., Plan 930
003 144 879	Lot 4
003 144 895	Lot 5
003 144 909	Lot 6 all of D.L. 159, Group 1, N.W.D., Plan 1219
012 045 730	Lot 34
012 066 796	Lot 23, D.L. 159, Grp. 1, N.W.D., Plan 1268
012 474 592	Lot 10, D.L. 159, Grp. 1, N.W.D., Plan 2043
012 474 606	Lot 19, D.L. 159, Grp. 1, N.W.D., Plan 2043
003 100 685	Lot 15, Block 9, D.L. 159, Grp. 1, N.W.D., Plan 2103
012 491 799	Lot 15, Block 10, D.L. 159, Grp. 1, N.W.D., Plan 2103

008 925 101 Lot 62, D.L. 159, Grp. 1, N.W.D., Plan 27749

008 454 639 Lot 92, D.L. 159, Grp. 1, N.W.D., Plan 37970

FROGGERS CREEK RAVINE PARK

<u>PID NO.</u>	<u>LEGAL DESCRIPTION</u>
002 445 263	Lot 13 except: Part subdivided by Plan 45667
012 044 491	South Half Lot 14
012 044 521	Lot 15
012 044 539	Lot 16
012 044 547	Lot 17 D.L. 158, Group 1, N.W.D., Plan 1273
012 044 555	Lot 18
003 146 294	West Half Lot 28
003 195 091	West Half Lot 29
003 141 951	West Half Lot 30
002 474 247	West Half of the South Half of Lot 31
002 474 166	West Half of the North Half of Lot 31
<hr/>	
012 400 386	Lot 1
012 400 645	Lot 16 Block 1, D.L. 158, N.W.D., Plan 1882
012 400 670	Lot 17
012 400 394	Lot 18
<hr/>	
007 480 598	Lot 135, D.L. 157, Group 1, N.W.D., Plan 44541
012 842 150	South Half of the South West Quarter, D.L. 158, Group 1 except: Firstly: Part subdivided by Plan 2044 Secondly: Part subdivided by Plan 43662, N.W.D.

BOUNDARY CREEK RAVINE PARK

<u>PID NO.</u>	<u>LEGAL DESCRIPTION</u>
011 416 246	Lot 1 except: Parcel A (Explanatory Plan 17437), D.L. 175, Group 1, N.W.D., Plan 9315
001 833 821	Parcel A (Explanatory Plan 7800), Lot 2 except: Part on Plan 21491; D.L. 175, Group 1, N.W.D., Plan 21491
006 948 014	Lot 176, D.L. 175, Group 1, N.W.D., Plan 33793
006 948 073	Lot 177, D.L. 175, Group 1, N.W.D., Plan 33793

GRAY CREEK RAVINE PARK

<u>PID NO.</u>	<u>LEGAL DESCRIPTION</u>
003 184 609	Lot 5 except: the West 20', D.L. 157, Group 1, N.W.D., Plan 4022
010 144 421	Lot R except: Parcel One (Reference Plan 15574); D.L. 157, Group 1, N.W.D., Plan 16073
010 390 553	Block C except: Firstly part on Plan 20303 and Secondly part on Plan 25844, D.L. 157, Group 1, N.W.D., Plan 18635
013 021 630	Lot 10, D.L. 157, Group 1, N.W.D., Plan 80162

BYRNE CREEK RAVINE PARK

<u>PID NO.</u>	<u>LEGAL DESCRIPTION</u>
002 526 531	Lot 1, Block 4, D.L. 160, Group 1, N.W.D., Plan 992
No Pid No.	Lots 1 - 4 and 6 - 8, Block 1A, D.L. 155A, Group 1, N.W.D., Plan 1425
003 113 752	Lot 1, Block 2"A", D.L. 155A, Group 1, N.W.D., Plan 1425
003 113 680	Lot 10, Block 2"A", D.L. 155A, Group 1, N.W.D., Plan 1425
015 946 517	Block 20, D.L. 155A, Group 1, N.W.D., Plan 1425
003 113 361	Lot 1, Block 21, D.L. 155A, Group 1, N.W.D., Plan 1425
003 113 337	Lot 2, Block 21, D.L. 155A, Group 1, N.W.D., Plan 1425
012 263 656	Lot 1
012 263 664	Lot 2
012 263 681	Lot 3
012 263 699	Lot 4
012 263 711	Lot 5
012 263 729	Lot 6
012 263 770	Lot 7
012 263 788	Lot 8
012 263 796	Lot 9
012 263 800	Lot 10
012 263 826	Lot 11
012 263 737	Lot 35
012 263 753	Lot 36
No PID No.	Lot A, Sketch 5114, except: Part subdivided by Plan 11040, Part subdivided by Plan 11041 and Part subdivided by Plan 11554; D.L. 160, Group 1, N.W.D. EXCEPT 1.599 ha shown outlined on Sketch prepared by R.E. Petersen, B.C.L.S. 18th day of June 1990 attached hereto marked Exhibit #3.
002 809 699	Lot 147, D.L. 159 and 160, Group 1, N.W.D., Plan 57406
002 809 737	Lot 153, D.L. 159 and 160, Group 1, N.W.D., Plan 57406

SCHEDULE F - RON McLEAN PARK

PID NO.

LEGAL DESCRIPTION

010 332 651

Lot "C", D.L. 160, Group 1, N.W.D., Plan 17958
except 0.234 ha shown outlined on Sketch
prepared by R.E. Petersen, B.C.L.S. 15th day
of June 1990 and hereto attached marked
Exhibit #4.

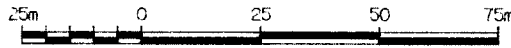
SCHEDULE G - BURNABY FRASER FORESHORE PARK

<u>PID NO.</u>	<u>LEGAL DESCRIPTION</u>
011 936 631	Lot 185, D.L. 163 and 165, Grp. 1, N.W.D., Plan 1050
011 936 649	Lot 186 except: Part subdivided by Plan 47786, D.L. 165, Group 1, N.W.D., Plan 1050
003 176 479	Block 187, D.L. 165, Group 1, N.W.D., Plan 1050
002 506 203	Lot 21 of D.L. 166A, Group 1, N.W.D., Plan 45841
000 716 723	3.267 ha and 9.506 ha of Parcel "C" (Reference Plan 943), D.L. 164, Group 1, Except: Firstly: Part on Plan 4826 and Secondly: Part on Explanatory Plan 5055, N.W.D., both shown outlined on Sketch prepared by R.E. Petersen, B.C.L.S. the 18th day of June 1990 hereto attached marked Exhibit #5
010 587 616	Lot 3, D.L. 166 and 167, Group 1, N.W.D., Plan 77290
010 587 624	Lot 4, D.L. 166 and 167, Group 1, N.W.D., Plan 77290
010 857 893	Lot B, D.L. 166 and 167, Group 1, N.W.D., Plan 77294
011 580 356	Lot 9, D.L. 161, Group 1, N.W.D., Plan 78088
016 303 920	4.419 ha of Lot 1, D.L. 162, 163, 164 and 165, Group 1, N.W.D., Plan 85385 shown on Sketch prepared by R.E. Petersen, B.C.L.S. the 13th day of June 1990 hereto attached marked Exhibit #6

PLAN OF PART OF LOT 15, PLAN 1037, TO ACCOMPANY BURNABY PARK DEDICATION BYLAW NO. , OF DISTRICT LOTS 209 AND 210, GP.1, N.W.D.

Municipality of Burnaby.

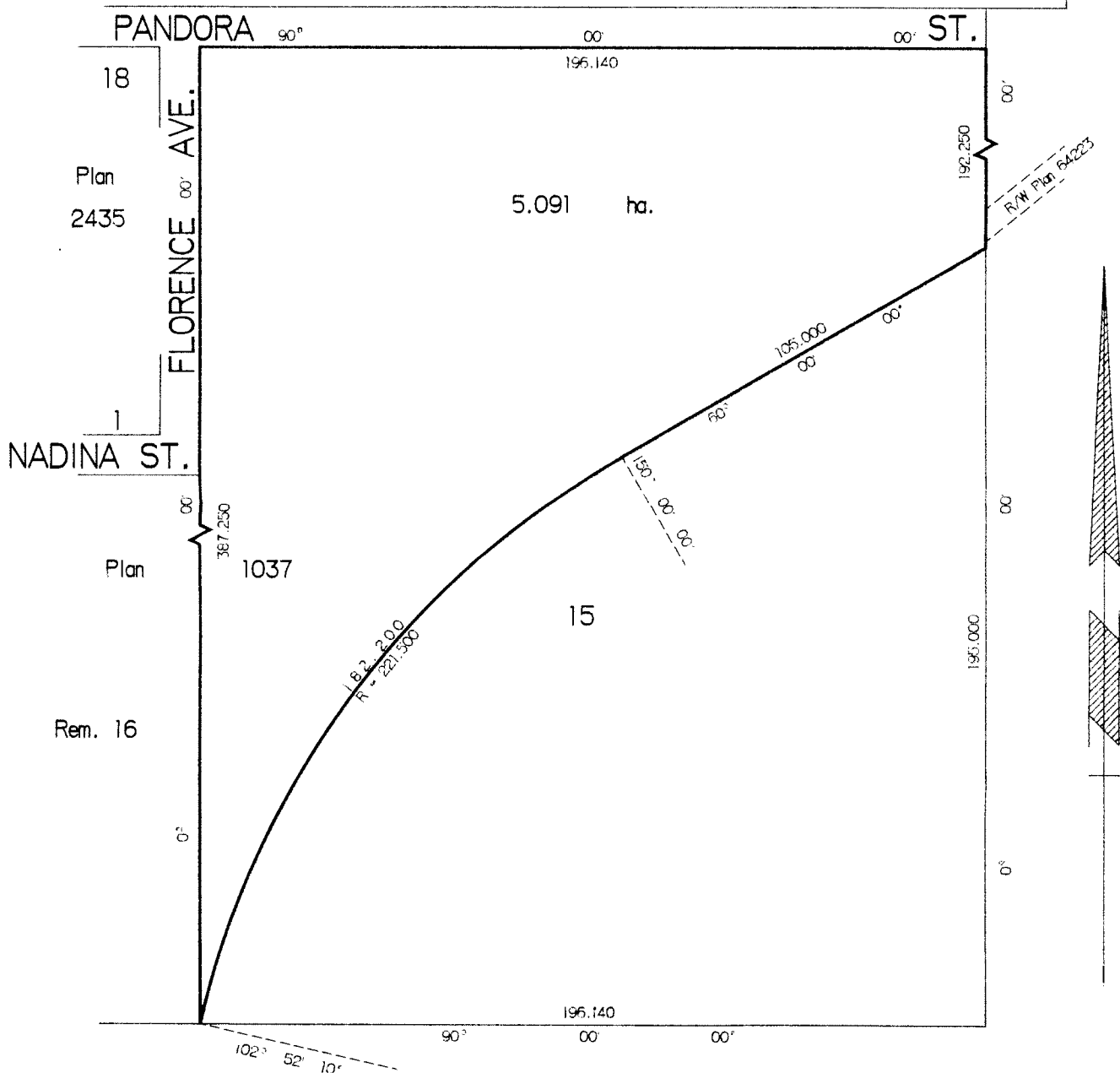
Scale 1 : 1250



Distances are in metres or decimals thereof.

Bearings are astronomic and are derived
from Plan 1037.

Plan
1
3081



Lot 145

Plan 27774

EXHIBIT #1

Certified correct this 13th day
of June, 1990.

R.E. Peterson

B.C.L.S.

PLAN OF PORTIONS OF LOTS 10, 11, 12 AND 13 OF BLOCK 4,
 PLAN 4032, TO ACCOMPANY BURNABY PARK DEDICATION
 BYLAW NO. , ALL OF D.L 207, GP. 1, N.W.D.

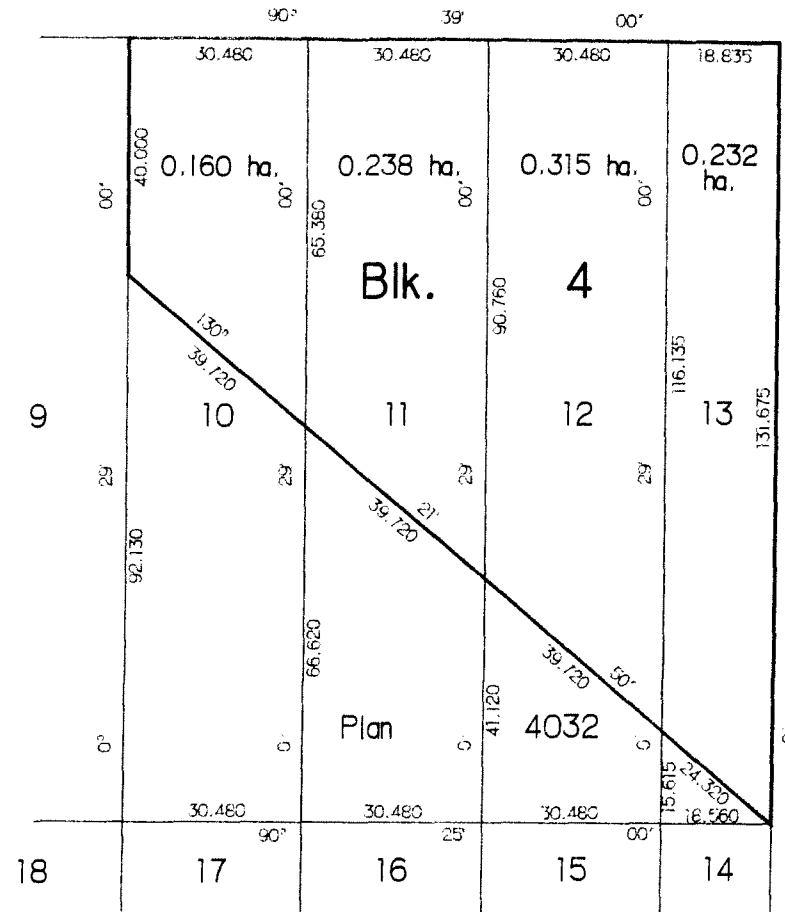
Municipality of Burnaby

HASTINGS ST.

Scale 1 : 1000



Distances are in metres or decimals thereof.
 Bearings are astronomic and are derived from
 Plan 4032.



PHILIPS
 AVE.



EXHIBIT #2

Certified correct this 12th
 day of June, 1990.

R.E. Peterson
 B.C.L.S.

PLAN OF PART OF LOT 1, PLAN 85385,
 TO ACCOMPANY BURNABY PARK DEDICATION
 BYLAW NO. _____, OF DISTRICT LOTS 162,
 163, 164 AND 165, GP.1, N.W.D.

Municipality of Burnaby.

Scale 1 : 1250



Distances are in metres or decimals thereof.

Bearings are astronomic and are derived
 from Plan 85385.

PATTERSON
 AVE.

Plan 66149
 MARINE
 WAY

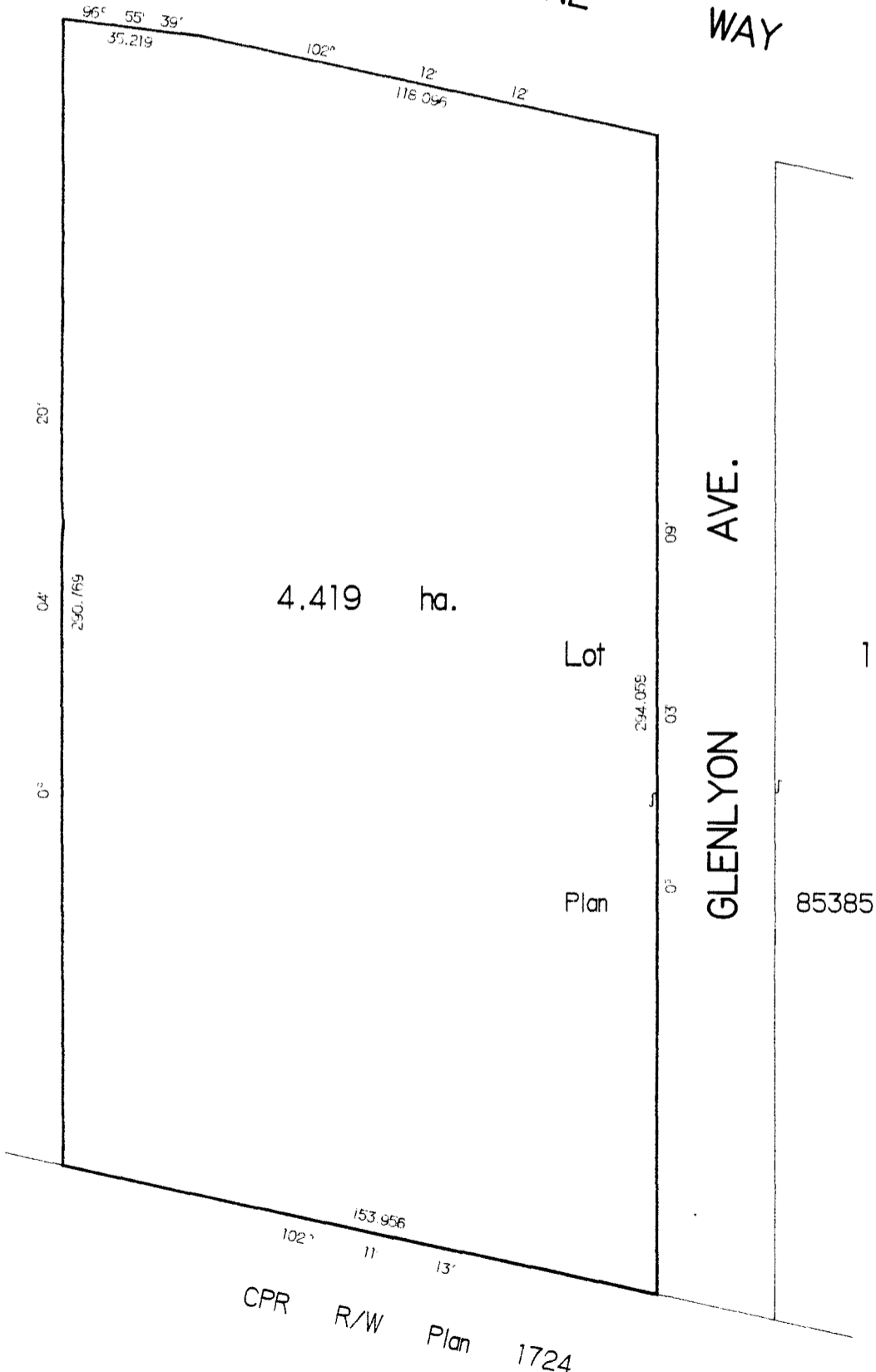


EXHIBIT #6

Certified correct this 13th day
 of June, 1990.

R.E. Peterson

B.C.L.S.