

THE CORPORATION OF THE DISTRICT OF BURNABY

BYLAW NO. 9408

A BYLAW to amend Bylaw No. 4742, being Burnaby Zoning Bylaw 1965, as amended by Bylaw No. 9310, being Burnaby Zoning Bylaw 1965, Amendment Bylaw No. 80, 1989

WHEREAS application for rezoning has been made to the Council.


AND WHEREAS the Council has held a public hearing thereon after duly giving notice of the hearing as prescribed by Sections 956 and 957 of the Municipal Act R.S.B.C. 1979.

NOW THEREFORE the Council of The Corporation of the District of Burnaby ENACTS as follows:

1. This Bylaw may be cited as BURNABY ZONING BYLAW 1965, AMENDMENT BYLAW NO. 35, 1990.
2. Bylaw No. 4742, as amended by Bylaw No. 9310 is further amended by striking out Section 3 of Bylaw No. 9310 and substituting therefor the following:

"3. The Comprehensive Development Plan entitled B.C. CELLULAR prepared by MUSSON, CATTELL, MACKEY PARTNERSHIP and on file in the office of the Director Planning and Building Inspection, is deemed to be attached to and form part of this Bylaw and any development on the lands rezoned by this Bylaw shall be in conformity with the said Comprehensive Development Plan."

Read a first time this	11th	day of	JUNE	1990
Read a second time this	9th	day of	JULY	19 90
Read a third time this	27th	day of	AUGUST	19 90
Reconsidered and adopted this	4th	day of	SEPTEMBER	1990

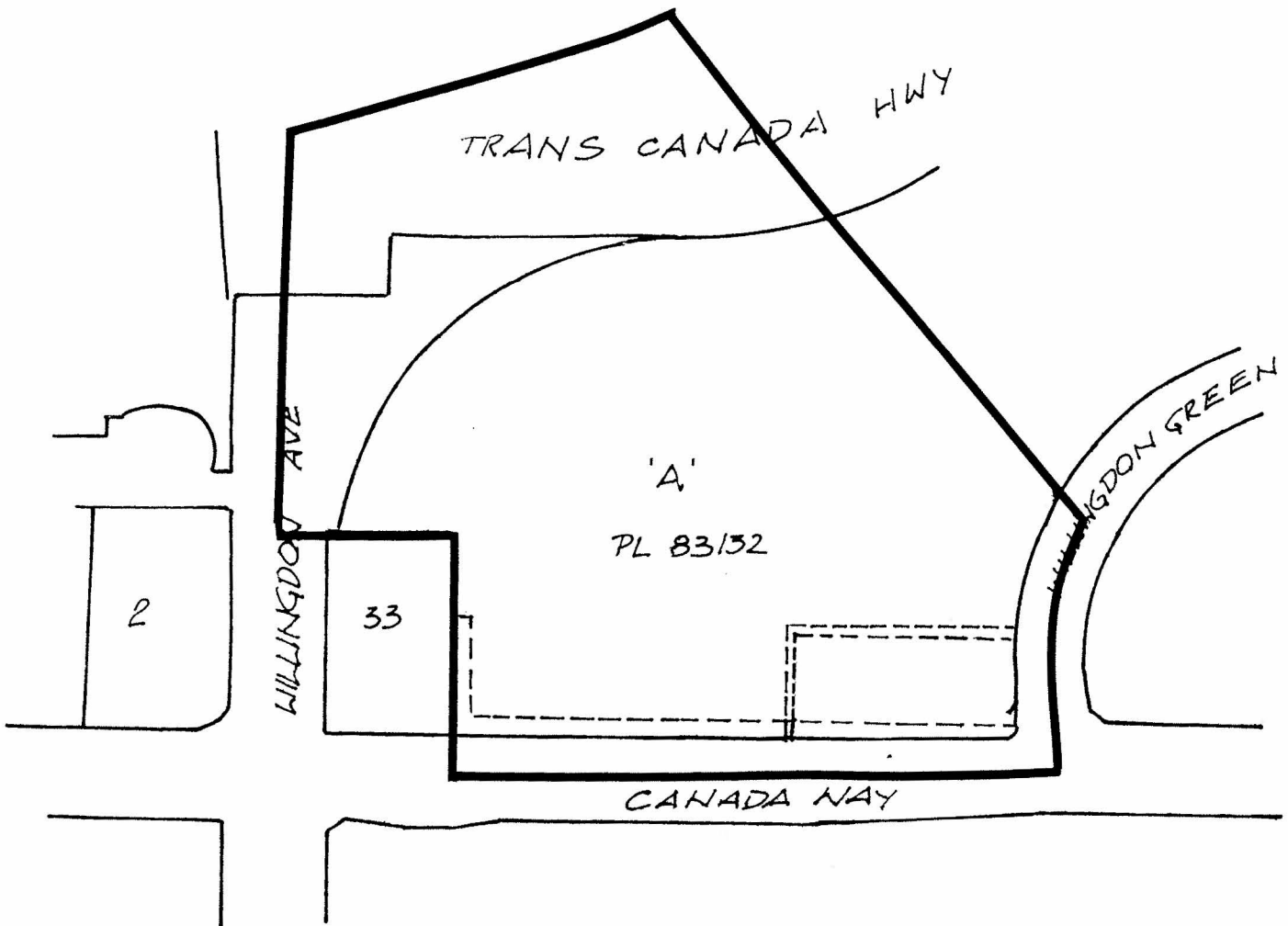

MAYOR


CLERK

BYLAW NUMBER 9408 BEING A BYLAW TO AMEND RZ #17/90
 BYLAW NUMBER 4742 BEING THE BURNABY ZONING BYLAW 1965

PROPERTY REZONED TO: "AMENDED" CD COMPREHENSIVE DEVELOPMENT DISTRICT
 (UTILIZING M5 LIGHT INDUSTRIAL DISTRICT USE GUIDELINES
 AND THE COMMUNITY PLAN GUIDELINES)

LEGAL: LOT A, D.L. 70, GROUP 1, N.W.D., PLAN 83132



THE AREA(S) SHOWN ABOVE
 OUTLINED IN BLACK (—)
 IS (ARE) REZONED:

FROM: CD COMPREHENSIVE DEVELOPMENT DISTRICT
 TO: CD COMPREHENSIVE DEVELOPMENT DISTRICT
 (UTILIZING M5 LIGHT INDUSTRIAL DISTRICT
 USE GUIDELINES AND THE COMMUNITY
 PLAN GUIDELINES)



PLANNING DEPARTMENT	THE CORPORATION OF THE DISTRICT OF BURNABY
SCALE 1:2000	<h1>OFFICIAL ZONING MAP</h1> <p>No. RZ 1806</p>
DRAWN E.P.	
DATE 1990 JUNE	