

THE CORPORATION OF THE DISTRICT OF BURNABY

BYLAW NO. 9399

A BYLAW to amend Bylaw No. 4742, being Burnaby Zoning Bylaw 1965, as amended by Bylaw No. 8605, being Burnaby Zoning Bylaw 1965, Amendment Bylaw No. 71, 1986

WHEREAS application for rezoning has been made to the Council.

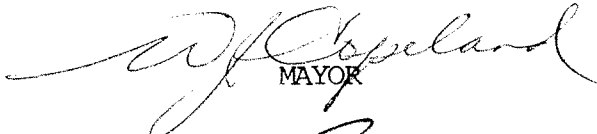
AND WHEREAS the Council has held a public hearing thereon after duly giving notice of the hearing as prescribed by Sections 956 and 957 of the Municipal Act R.S.B.C. 1979.


NOW THEREFORE the Council of The Corporation of the District of Burnaby ENACTS as follows:

1. This Bylaw may be cited as BURNABY ZONING BYLAW 1965, AMENDMENT BYLAW NO. 32, 1990.
2. Bylaw No. 4742, as amended by Bylaw No. 8605 is further amended by striking out Section 3 of Bylaw No. 8605 and substituting therefor the following:

"3. The Comprehensive Development Plan entitled PROPOSED OFFICE BUILDING, STATION SQUARE, BURNABY, B.C. prepared by URBAN DESIGN GROUP and on file in the office of the Director Planning and Building Inspection, is deemed to be attached to and form part of this Bylaw and any development on the lands rezoned by this Bylaw shall be in conformity with the said Comprehensive Development Plan."

Read a first time this	7th	day of	MAY	1990
Read a second time this	11th	day of	JUNE	1990
Read a third time this	13th	day of	AUGUST	1990
Reconsidered and adopted this	13th	day of	NOVEMBER	1990

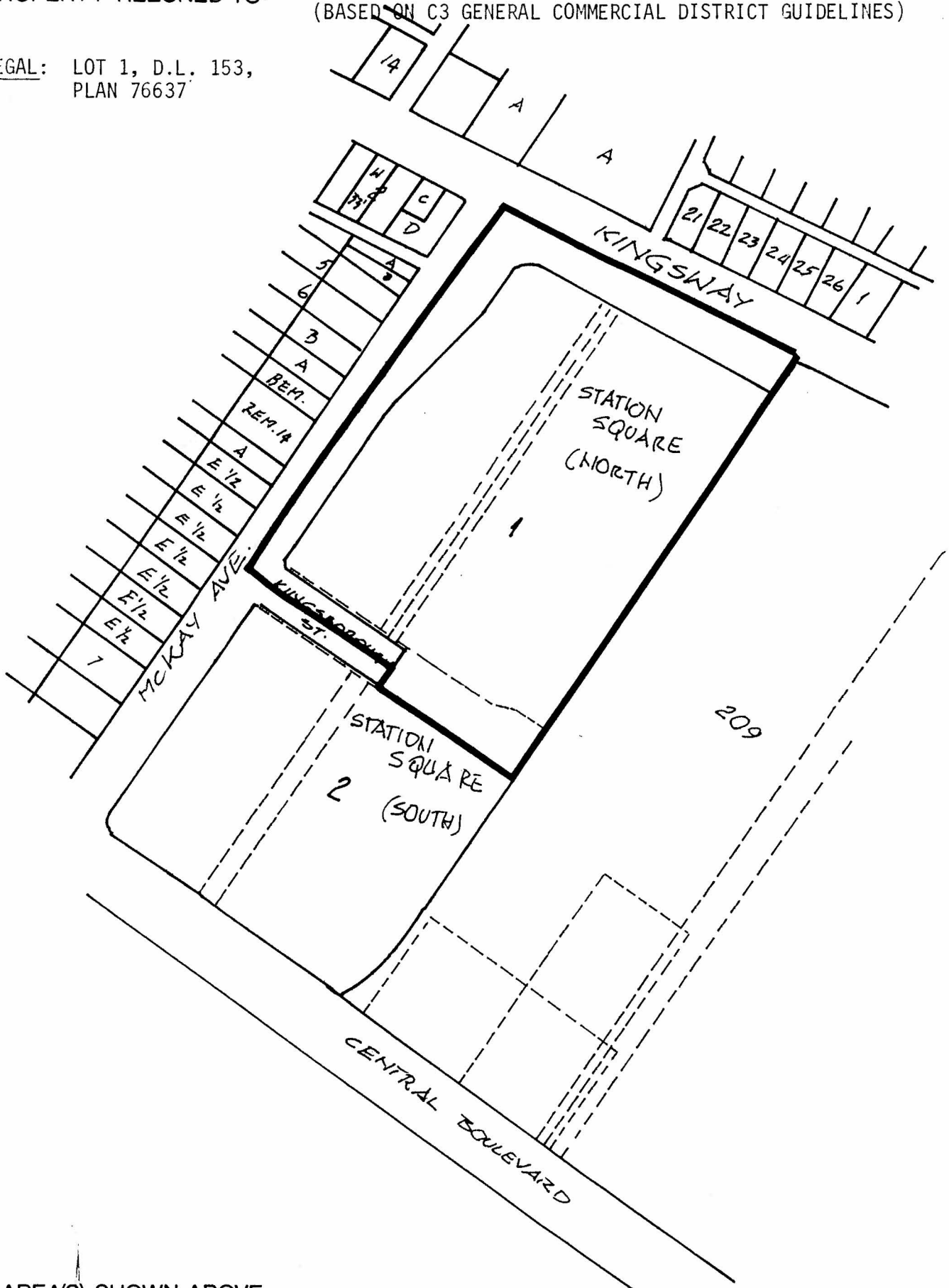

MAYOR


CLERK

BYLAW NUMBER 9399 BEING A BYLAW TO AMEND RZ #68/89
 BYLAW NUMBER 4742 BEING THE BURNABY ZONING BYLAW 1965

PROPERTY REZONED TO: "AMENDED" CD COMPREHENSIVE DEVELOPMENT DISTRICT MAP "B"
 (BASED ON C3 GENERAL COMMERCIAL DISTRICT GUIDELINES)

LEGAL: LOT 1, D.L. 153,
 PLAN 76637



THE AREA(S) SHOWN ABOVE
 OUTLINED IN BLACK (—)
 IS (ARE) REZONED:

FROM: CD COMPREHENSIVE DEVELOPMENT DISTRICT
 (BASED ON C3 GENERAL COMMERCIAL DISTRICT AND
 RM5 MULTIPLE FAMILY RESIDENTIAL DISTRICT GUIDELINES)
 TO: CD COMPREHENSIVE DEVELOPMENT DISTRICT
 (BASED ON C3 GENERAL COMMERCIAL DISTRICT GUIDELINES)

PLANNING DEPARTMENT	
SCALE	1:2000
DRAWN	E. P.
DATE	1990 MAY

THE CORPORATION OF THE DISTRICT OF BURNABY

OFFICIAL ZONING MAP

No. RZ 1804