

THE CORPORATION OF THE DISTRICT OF BURNABY

BYLAW NO. 9396

A BYLAW to amend Bylaw No. 4742, being
Burnaby Zoning Bylaw 1965

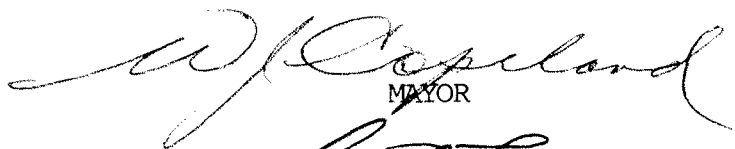
WHEREAS application for rezoning has been made to the Council.


AND WHEREAS the Council has held a public hearing thereon after duly giving notice of the hearing as prescribed by sections 956 and 957 of the Municipal Act R.S.B.C. 1979.

NOW THEREFORE the Council of The Corporation of the District of Burnaby ENACTS as follows:

1. This Bylaw may be cited as BURNABY ZONING BYLAW 1965, AMENDMENT BYLAW NO. 29, 1990.
2. The map (hereinafter called "Map 'A'") attached to and forming an integral part of Bylaw No. 4742, being Burnaby Zoning Bylaw 1965, and designated as the Official Zoning Map of The Corporation of the District of Burnaby, is hereby amended according to the Map (hereinafter called "Map 'B'"), marginally numbered R.Z. 1801 annexed to this Bylaw, and in accordance with the explanatory legend, notations, references and boundaries designated, described, delimited and specified in particularity shown upon said Map 'B', and the various boundaries and districts shown upon said Map 'B', respectively are an amendment of and in substitution for the respective districts, designated and marked on said Map 'A' insofar as the same are changed, modified or varied thereby, and the said Map 'A' shall be deemed to be and is hereby declared to be amended accordingly and the said Map 'B' is hereby declared to be and shall form an integral part of said Map 'A' as if originally incorporated therein and shall be interpreted accordingly.

Read a first time this	7th	day of	MAY	19 90
Read a second time this	11th	day of	JUNE	19 90
Read a third time this	9th	day of	JULY	19 90
Reconsidered and adopted this	23rd	day of	JULY	1990


MAYOR


CLERK

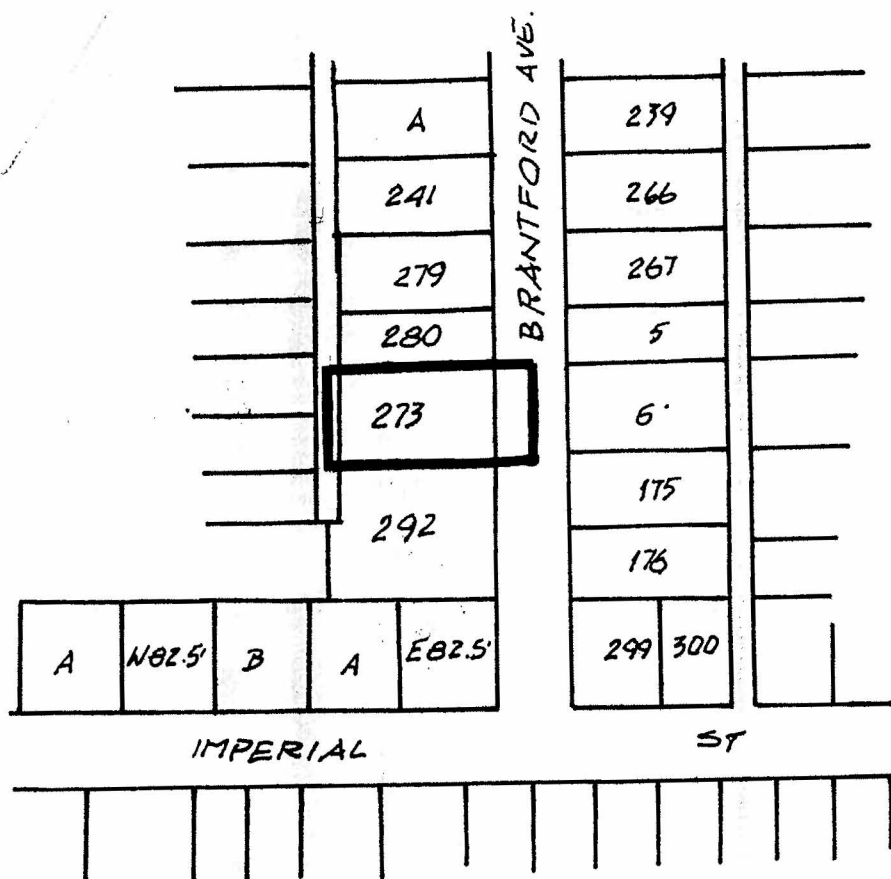
BYLAW NUMBER 9396 BEING A BYLAW TO AMEND RZ #71/89
 BYLAW NUMBER 4742 BEING THE BURNABY ZONING BYLAW 1965

PROPERTY REZONED TO:

MAP "B"

R9A RESIDENTIAL DISTRICT

LEGAL: LOT 1, D.L. 92, PLAN 80166



THE AREA(S) SHOWN ABOVE
 OUTLINED IN BLACK (—)
 IS (ARE) REZONED:

FROM: R9 RESIDENTIAL DISTRICT
 TO: R9A RESIDENTIAL DISTRICT



PLANNING DEPARTMENT	
SCALE	1:2000
DRAWN	G.P.
DATE	1990 MAY

THE CORPORATION OF THE DISTRICT OF BURNABY

OFFICIAL ZONING MAP

No. RZ 1801