

THE CORPORATION OF THE DISTRICT OF BURNABY

BYLAW NO. 9370

A BYLAW to amend Bylaw No. 4742, being Burnaby Zoning Bylaw 1965, as amended by Bylaw No. 7503, being Burnaby Zoning Bylaw 1965, Amendment Bylaw No. 19, 1980

WHEREAS application for rezoning has been made to the Council.

AND WHEREAS the Council has held a public hearing thereon after duly giving notice of the hearing as prescribed by Sections 956 and 957 of the Municipal Act R.S.B.C. 1979.

NOW THEREFORE the Council of The Corporation of the District of Burnaby ENACTS as follows:

1. This Bylaw may be cited as BURNABY ZONING BYLAW 1965, AMENDMENT BYLAW NO. 23, 1990.
2. Bylaw No. 4742, as amended by Bylaw No. 7503 is further amended by striking out Section 3 of Bylaw No. 7503 and substituting therefor the following:

"3. The Comprehensive Development Plan entitled MULTI-TENANT FACILITY DISCOVERY PARKS, BURNABY, B.C. prepared by BUSBY BRIDGER ARCHITECTS and on file in the office of the Director Planning and Building Inspection, is deemed to be attached to and form part of this Bylaw and any development on the lands rezoned by this Bylaw shall be in conformity with the said Comprehensive Development Plan."

Read a first time this	2nd	day of	APRIL	1990
Read a second time this	30th	day of	APRIL	1990
Read a third time this	18th	day of	FEBRUARY	1991
Reconsidered and adopted this	15th	day of	APRIL	1991


MAYOR


CLERK

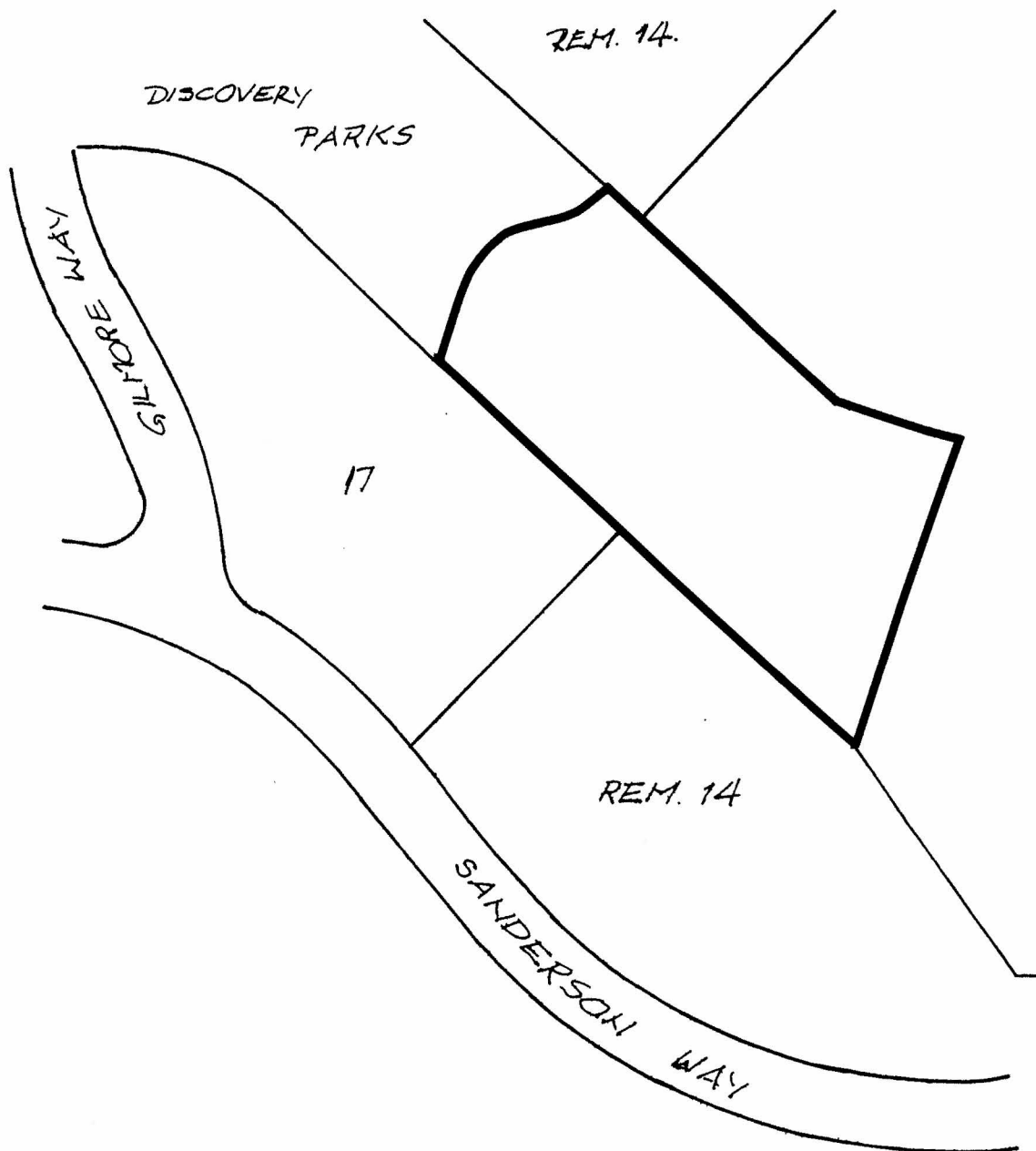
BYLAW NUMBER 9376 BEING A BYLAW TO AMEND RZ #15/90
 BYLAW NUMBER 4742 BEING THE BURNABY ZONING BYLAW 1965

PROPERTY REZONED TO:

MAP "B"

"AMENDED" CD COMPREHENSIVE DEVELOPMENT DISTRICT
 (BASED ON THE DISCOVERY PARKS COMMUNITY PLAN)

LEGAL: PART OF LOT 14 EXCEPT FIRSTLY: PARCEL A (BYLAW PLAN 60615),
 SECONDLY: PART SUBDIVIDED BY PLAN 60616, THIRDLY: PART
 SUBDIVIDED BY PLAN 64401, FOURTHLY: PART SUBDIVIDED BY
 PLAN 80047, D.L. 71 AND D.L. 72, PLAN 59477;



THE AREA(S) SHOWN ABOVE
 OUTLINED IN BLACK (—) IS (ARE) REZONED:

FROM: CD COMPREHENSIVE DEVELOPMENT DISTRICT
 (BASED ON THE DISCOVERY PARKS COMMUNITY PLAN)

TO: CD COMPREHENSIVE DEVELOPMENT DISTRICT
 (BASED ON THE DISCOVERY PARKS COMMUNITY PLAN)



PLANNING DEPARTMENT		THE CORPORATION OF THE DISTRICT OF BURNABY	
DATE	N.T.S.	OFFICIAL ZONING MAP No. RZ 1796	
DRAWN	E.P.		
DATE	1990 APR.		