

THE CORPORATION OF THE DISTRICT OF BURNABY

BYLAW NO. 9341

A BYLAW to amend Bylaw No. 4742, being  
Burnaby Zoning Bylaw 1965

WHEREAS application for rezoning has been made to the Council.


AND WHEREAS the Council has held a public hearing thereon after duly giving notice of the time and place of such hearing as prescribed by Sections 956 and 957 of the Municipal Act, R.S.B.C. 1979.


NOW THEREFORE the Council of The Corporation of the District of Burnaby ENACTS as follows:

1. This Bylaw may be cited as BURNABY ZONING BYLAW 1965, AMENDMENT BYLAW NO. 7, 1990.
2. The Map (hereinafter called "Map 'A'"), attached to and forming an integral part of Bylaw No. 4742, being "Burnaby Zoning Bylaw 1965", and designated as the Official Zoning Map of The Corporation of the District of Burnaby, is hereby amended according to the Map (hereinafter called "Map 'B'"), marginally numbered R.Z. 1781, annexed to this Bylaw, and in accordance with the explanatory legend, notations, references and boundaries designated, described, delimited and specified in particularity shown upon said Map 'B'; and the various boundaries and districts shown upon said Map 'B' respectively are an amendment of and in substitution for the respective districts, designated and marked on said Map 'A' insofar as the same are changed, modified or varied thereby, and the said Map 'A' shall be deemed to be and is hereby declared to be amended accordingly and the said Map 'B' is hereby declared to be and shall form an integral part of said Map 'A', as if originally incorporated therein and shall be interpreted accordingly.

3. The Comprehensive Development Plan represented in the report of the Director Planning & Building Inspection entitled "Rezoning of Lot 53, District Lot 73, Group 1, New Westminster District, Plan 65869 from M1 (Manufacturing District) and R5 (Residential District) to CD (Comprehensive Development District) utilizing the M5 (Light Industrial District) use guidelines and the Community Plan guidelines dated January 22, 1990 including the sketches contained therein and on file in the office of the Director Planning and Building Inspection, is deemed to be attached to and form part of this Bylaw and any development on the lands rezoned by this Bylaw shall be in conformity with the said Comprehensive Development Plan.

Read a first time this	29th day of	JANUARY	1990
Read a second time this	26th day of	FEBRUARY	1990
Read a third time this	2nd day of	APRIL	1990
Reconsidered and adopted this	23rd day of	JULY	1990

  
MAYOR

  
CLERK

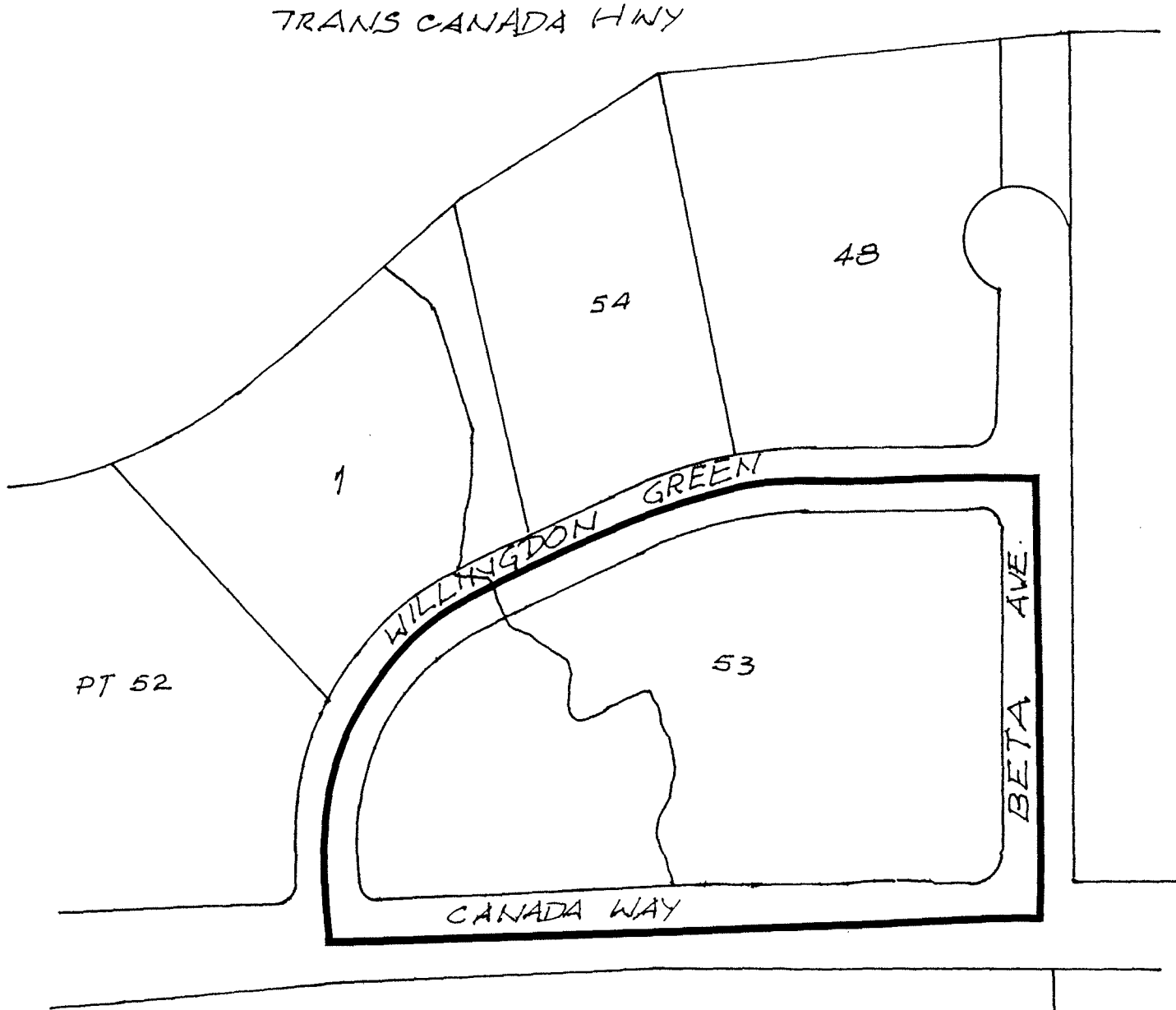
BYLAW NUMBER 9341 BEING A BYLAW TO AMEND RZ #93/89  
 BYLAW NUMBER 4742 BEING THE BURNABY ZONING BYLAW 1965

PROPERTY REZONED TO:

MAP "B"

CD COMPREHENSIVE DEVELOPMENT DISTRICT  
 (UTILIZING THE M5 LIGHT INDUSTRIAL DISTRICT  
 USE GUIDELINES AND THE COMMUNITY PLAN GUIDELINES)

LEGAL: LOT 53, PLAN 65869, D.L. 73, GROUP 1, N.W.D.



THE AREA(S) SHOWN ABOVE  
 OUTLINED IN BLACK (—)  
 IS (ARE) REZONED:

FROM: M1 MANUFACTURING DISTRICT AND R5 RESIDENTIAL DISTRICT  
 TO: CD COMPREHENSIVE DEVELOPMENT DISTRICT  
 (UTILIZING M5 GUIDELINES AND COMMUNITY  
 PLAN GUIDELINES)



PLANNING DEPARTMENT		THE CORPORATION OF THE DISTRICT OF BURNABY	
SCALE	1:2000	<b>OFFICIAL ZONING MAP</b> No. RZ 1781	
DRAWN	E.P.		
DATE	1990 Feb.		