

THE CORPORATION OF THE DISTRICT OF BURNABY

BYLAW NO. 9307

A BYLAW to amend Bylaw No. 4742, being Burnaby Zoning Bylaw 1965, as amended by Bylaw No. 7708, being Burnaby Zoning Bylaw 1965, Amendment Bylaw No. 55, 1981

WHEREAS application for rezoning has been made to the Council.



AND WHEREAS the Council has held a public hearing thereon after duly giving notice of the hearing as prescribed by Sections 956 and 957 of the Municipal Act R.S.B.C. 1979.

NOW THEREFORE the Council of The Corporation of the District of Burnaby ENACTS as follows:

1. This Bylaw may be cited as BURNABY ZONING BYLAW 1965, AMENDMENT BYLAW NO. 77, 1989.
2. Bylaw No. 4742, as amended by Bylaw No. 7708 is further amended by striking out Section 3 of Bylaw No. 7708 and substituting therefor the following:

"3. The Comprehensive Development Plan entitled PROPOSED PARKING LOT, FUTURE TOWNHOUSE SITE prepared by FAROUK NOORMOHAMED and on file in the office of the Director Planning and Building Inspection, is deemed to be attached to and form part of this Bylaw and any development on the lands rezoned by this Bylaw shall be in conformity with the said Comprehensive Development Plan."

Read a first time this 20th day of NOVEMBER 1989  
Read a second time this 18th day of DECEMBER 1989  
Read a third time this 11th day of JUNE 1990  
Reconsidered and adopted this 17th day of SEPTEMBER 1990

  
MAYOR  
  
CLERK

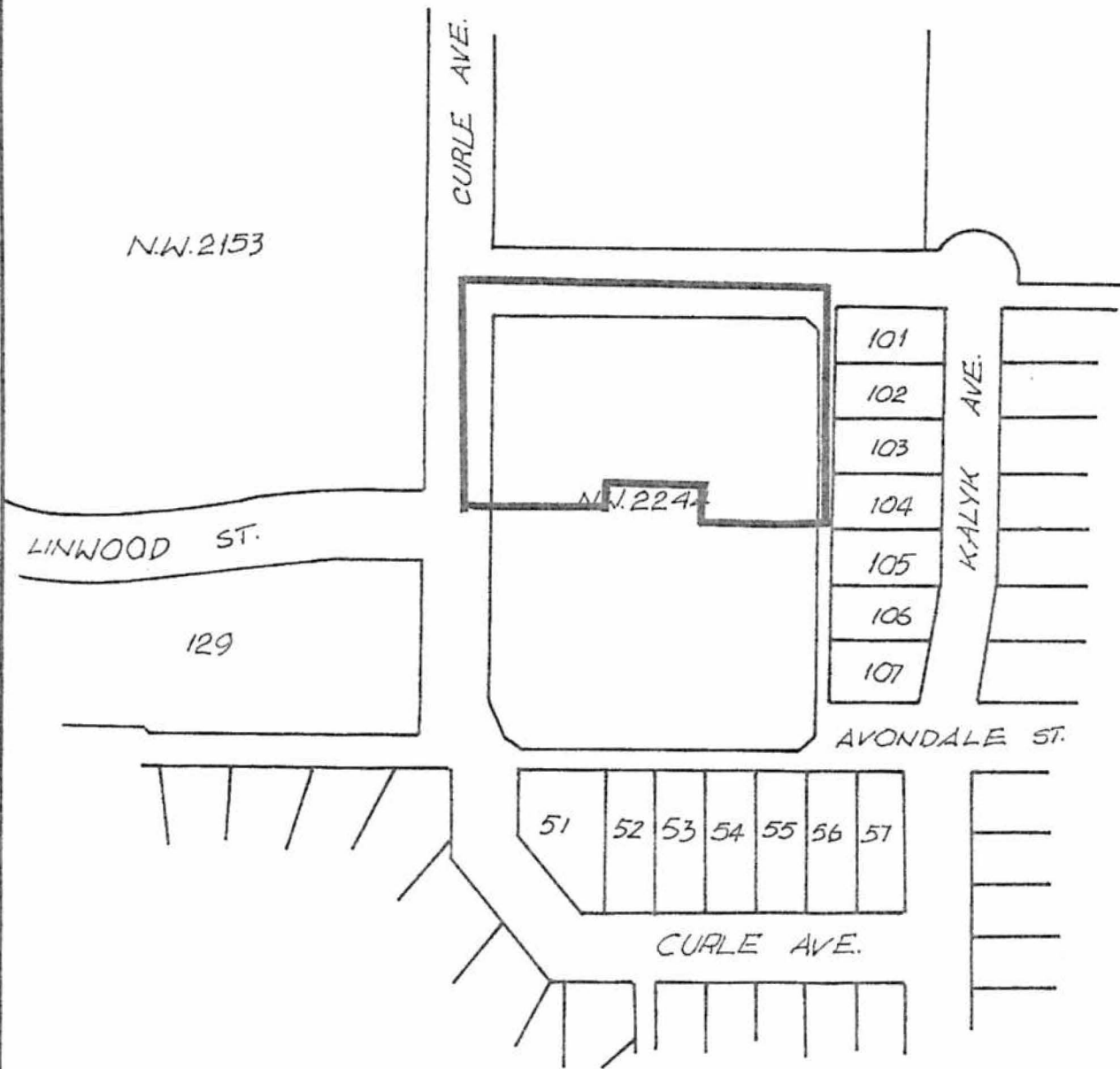
BYLAW NUMBER 9307 BEING A BYLAW TO AMEND RZ #77/89  
 BYLAW NUMBER 4742 BEING THE BURNABY ZONING BYLAW 1965

MAP "B"

PROPERTY REZONED TO:

"AMENDED" CD COMPREHENSIVE DEVELOPMENT DISTRICT  
 (UTILIZING THE RM1 MULTIPLE FAMILY RESIDENTIAL  
 DISTRICT AND P8 PARKING DISTRICT AS GUIDELINES)

NORTH PART OF PARCEL 134 EXC. PHASE 1, STRATA PLAN N.W.2244,  
 D.L. 68, PLAN 67049



THE AREA(S) SHOWN ABOVE  
 OUTLINED IN BLACK (—) IS (ARE) REZONED:

FROM: CD COMPREHENSIVE DEVELOPMENT DISTRICT  
 TO: CD COMPREHENSIVE DEVELOPMENT DISTRICT  
 (UTILIZING THE RM1 MULTIPLE FAMILY RESIDENTIAL  
 DISTRICT AND P8 PARKING DISTRICT AS GUIDELINES)



PLANNING DEPARTMENT		THE CORPORATION OF THE DISTRICT OF BURNABY	
SCALE	1:2000	<h1>OFFICIAL ZONING MAP</h1>	
DRAWN	E.P.		
DATE	1989.DEC.		
		No. RZ 1767	