

THE CORPORATION OF THE DISTRICT OF BURNABY

BYLAW NO. 9277

A BYLAW to amend Bylaw No. 4742, being Burnaby Zoning Bylaw 1965, as amended by Bylaw No. 8820, being Burnaby Zoning Bylaw 1965, Amendment Bylaw No. 71, 1987

WHEREAS application for rezoning has been made to the Council.

AND WHEREAS the Council has held a public hearing thereon after duly giving notice of the hearing as prescribed by Sections 956 and 957 of the Municipal Act R.S.B.C. 1979.

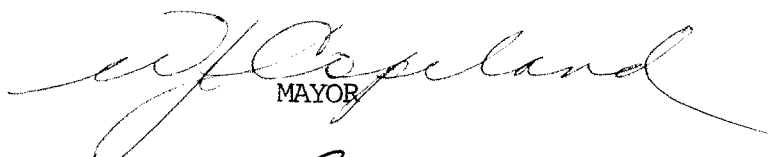
NOW THEREFORE the Council of The Corporation of the District of Burnaby ENACTS as follows:


1. This Bylaw may be cited as BURNABY ZONING BYLAW 1965, AMENDMENT BYLAW NO. 64, 1989.

2. Bylaw No. 4742, as amended by Bylaw No. 8820 is further amended by striking out Section 3 of Bylaw No. 8820 and substituting therefor the following:

"3. The Comprehensive Development Plan entitled STATION HILL PARK prepared by LUTZ ASSOCIATES and on file in the office of the Director Planning and Building Inspection, is deemed to be attached to and form part of this Bylaw and any development on the lands rezoned by this Bylaw shall be in conformity with the said Comprehensive Development Plan."

Read a first time this	2nd	day of	OCTOBER	1989
Read a second time this	30th	day of	OCTOBER	1989
Read a third time this	11th	day of	DECEMBER	1989
Reconsidered and adopted this	18th	day of	DECEMBER	1989

  
MAYOR

  
CLERK

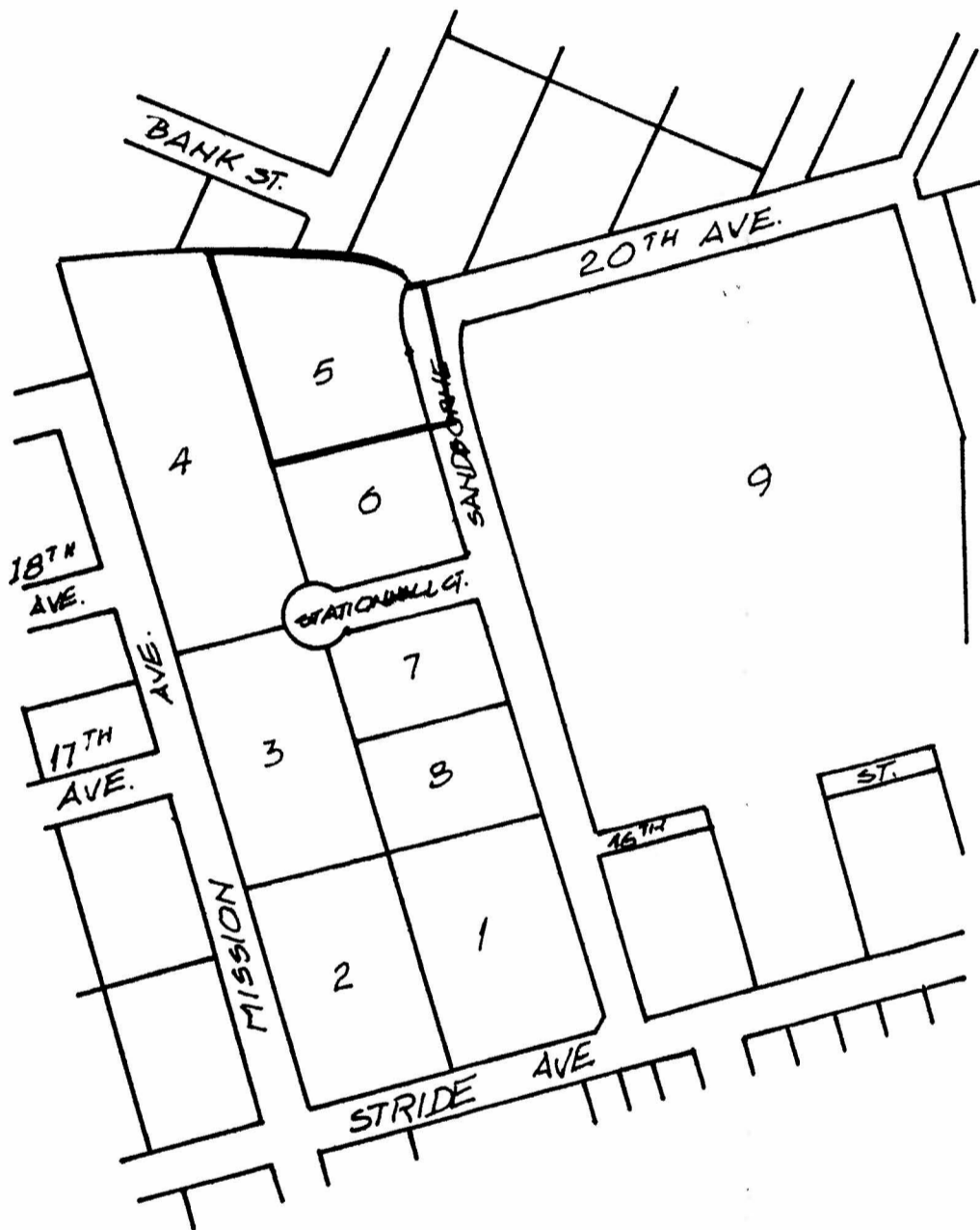
BYLAW NUMBER 9277 BEING A BYLAW TO AMEND RZ #49/89  
 BYLAW NUMBER 4742 BEING THE BURNABY ZONING BYLAW 1965

PROPERTY REZONED TO:

MAP "B"

(AMENDED) CD COMPREHENSIVE DEVELOPMENT DISTRICT  
 (BASED ON RM2 AND RM3 MULTIPLE FAMILY  
 RESIDENTIAL DISTRICT USE AND DENSITY)

LOT 5, DISTRICT LOTS 160 AND 171, PLAN 78941



THE AREA(S) SHOWN ABOVE FROM: CD COMPREHENSIVE DEVELOPMENT DISTRICT  
 OUTLINED IN BLACK (—) IS (ARE) REZONED: TO: CD COMPREHENSIVE DEVELOPMENT DISTRICT  
 (BASED ON RM2 AND RM3 MULTIPLE FAMILY  
 RESIDENTIAL DISTRICT USE AND DENSITY)



PLANNING DEPARTMENT		THE CORPORATION OF THE DISTRICT OF BURNABY	
SCALE	N.T.S.	OFFICIAL ZONING MAP	
DRAWN	E.P.		
DATE			
		No. RZ	1745