

THE CORPORATION OF THE DISTRICT OF BURNABY

BYLAW NO. 9262

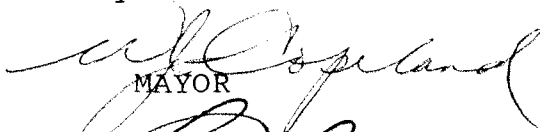

A BYLAW to stop up and close to traffic
portion of road

WHEREAS that portion of road shown on the plan annexed hereto dedicated by Plan 65385 is no longer required for road purposes.

NOW THEREFORE the Council of The Corporation of the District of Burnaby ENACTS as follows:

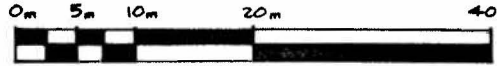
1. This Bylaw may be cited as BURNABY ROAD CLOSING BYLAW NO. 2, 1989.
2. That portion of road situate, lying and being in the Municipality of Burnaby, in the Province of British Columbia, and being more particularly known and described as that portion of road in District Lot 92, Group 1, New Westminster District, dedicated by the deposit of Plan 65385 containing by admeasurement 101.5 m² shown outlined on the plan prepared by E. Wong, B.C.L.S., certified correct the 15th day of May, 1989, a copy of which is annexed hereto, is hereby stopped up and closed to traffic.
3. The Municipal Clerk is hereby authorized and empowered to petition the Minister of Municipal Affairs to abandon the said portion of road more particularly described in section 2 hereof and vest title thereto in the name of The Corporation of the District of Burnaby.

Read a first time this 21st day of AUGUST 1989
Read a second time this 21st day of AUGUST 1989
Read a third time this 21st day of AUGUST 1989
Reconsidered and adopted this 5th day of SEPTEMBER 1989


MAYOR

CLERK

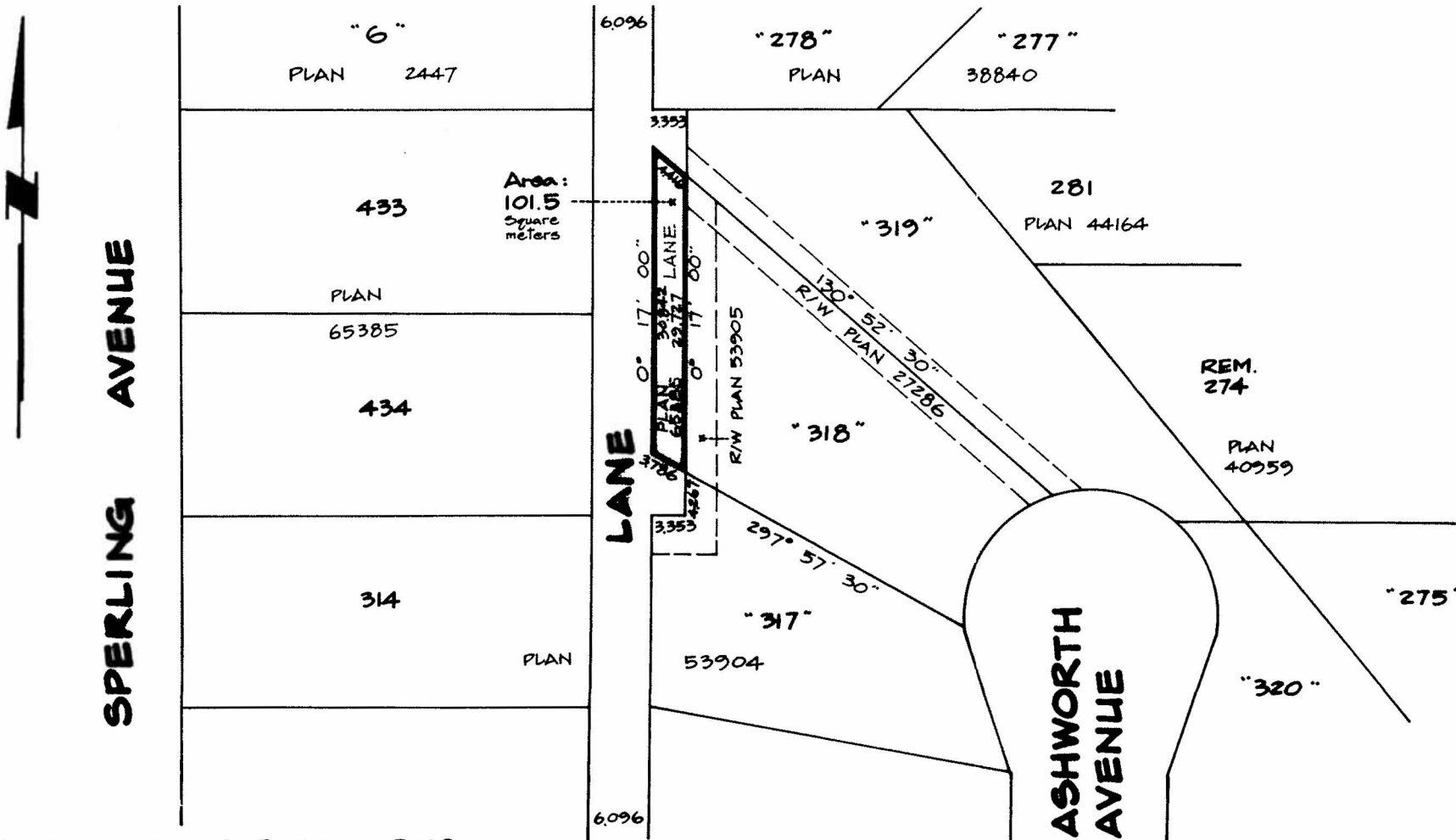
EXPLANATORY PLAN TO ACCOMPANY THE CORPORATION OF THE DISTRICT OF BURNABY LANE CLOSING BYLAW NO. _____ FOR A PORTION OF LANE IN DISTRICT LOT 92 GROUP 1 NEW WESTMINSTER DISTRICT DEDICATED BY PLAN 65385

Scale: 1:500



All distances are in metres unless otherwise stated.

B.C.G.S. 92G.026



PLAN

Deposited in the Land Title Office at Vancouver, B.C., This _____ day of _____, 1989.

Ref: _____
 _____ Registrar

THE CORPORATION OF THE DISTRICT OF BURNABY

 MAYOR

 MUNICIPAL CLERK

CERTIFIED CORRECT ACCORDING TO LAND TITLE OFFICE RECORDS:

E. J. Hong
 B.C.L.S.
 May 15, 1989.

Bearings are astronomic and derived from Plan 53904.

"This plan lies within the Greater Vancouver Regional District."

Ken K. Wong & Associates
 Canada & B.C. Land Surveyors
 5624 E. Hastings Street
 Burnaby, B.C., V5B 1R4
 Telephone: 294-8881