

THE CORPORATION OF THE DISTRICT OF BURNABY

BYLAW NO. 9232

A BYLAW to amend Bylaw No. 4742, being
Burnaby Zoning Bylaw 1965

WHEREAS application for rezoning has been made to the Council.

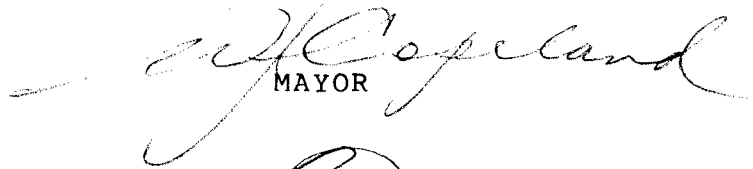
AND WHEREAS the Council has held a public hearing thereon after duly giving notice of the time and place of such hearing as prescribed by Sections 956 and 957 of the Municipal Act, R.S.B.C. 1979.


NOW THEREFORE the Council of The Corporation of the District of Burnaby ENACTS as follows:

1. This Bylaw may be cited as BURNABY ZONING BYLAW 1965, AMENDMENT BYLAW NO. 52, 1989.
2. The Map (hereinafter called "Map 'A'"), attached to and forming an integral part of Bylaw No. 4742, being "Burnaby Zoning Bylaw 1965", and designated as the Official Zoning Map of The Corporation of the District of Burnaby, is hereby amended according to the Map (hereinafter called "Map 'B'"), marginally numbered R.Z. 1738, annexed to this Bylaw, and in accordance with the explanatory legend, notations, references and boundaries designated, described, delimited and specified in particularity shown upon said Map 'B'; and the various boundaries and districts shown upon said Map 'B' respectively are an amendment of and in substitution for the respective districts, designated and marked on said Map 'A' insofar as the same are changed, modified or varied thereby, and the said Map 'A' shall be deemed to be and is hereby declared to be amended accordingly and the said Map 'B' is hereby declared to be and shall form an integral part of said Map 'A', as if originally incorporated therein and shall be interpreted accordingly.

3. The Comprehensive Development Plan entitled INN ON THE PARK prepared by OBERTO OBERTI INC. ARCHITECTS and on file in the office of the Director Planning and Building Inspection, is deemed to be attached to and form part of this Bylaw and any development on the lands rezoned by this Bylaw shall be in conformity with the said Comprehensive Development Plan.

Read a first time this	10th day of	JULY	1989
Read a second time this	8th day of	AUGUST	1989
Read a third time this	16th day of	OCTOBER	1989
Reconsidered and adopted this	11th day of	DECEMBER	1989


MAYOR


CLERK

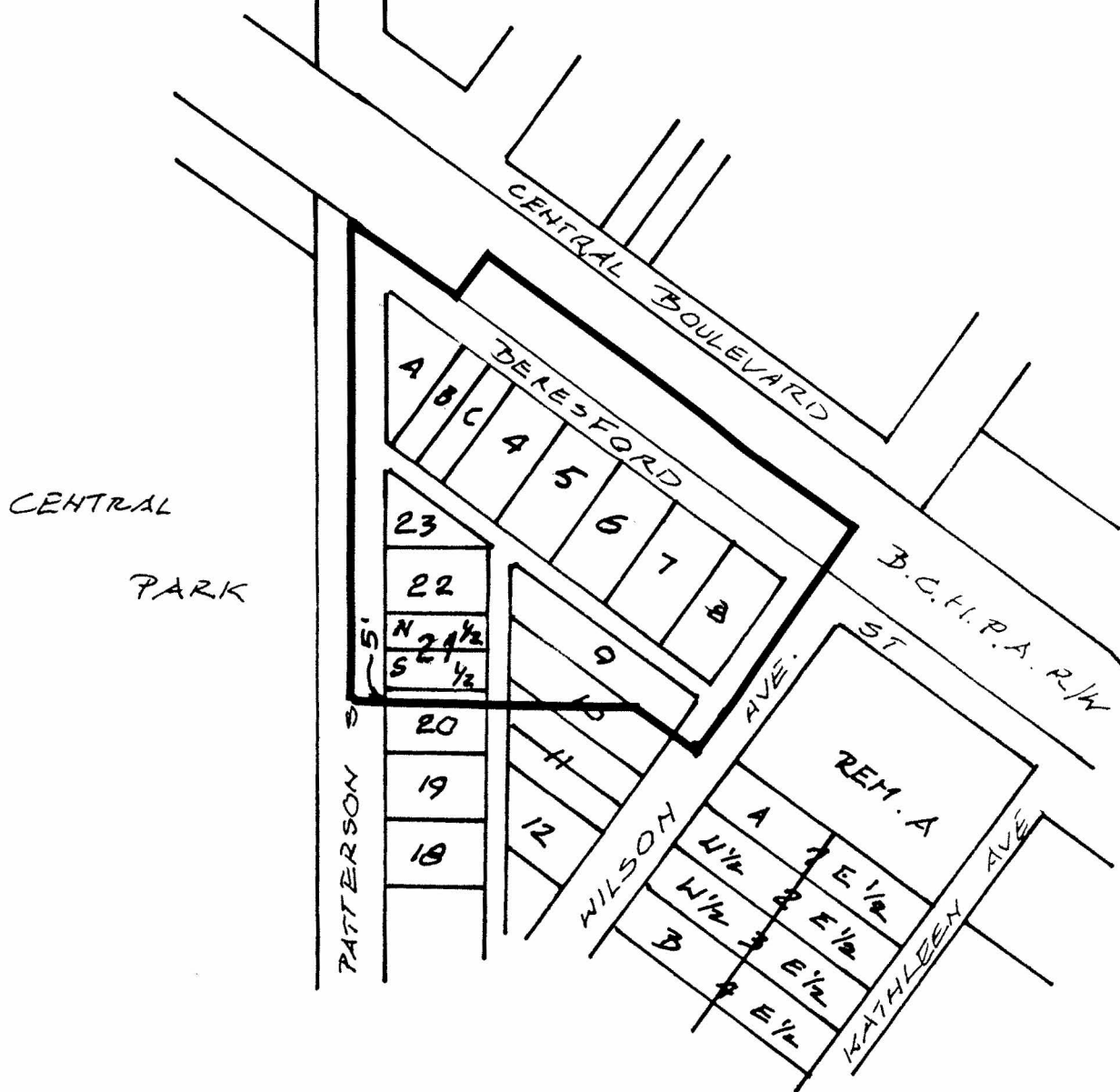
CERTIFIED A TRUE COPY THIS
13th DAY OF DECEMBER 1989

AUTHORIZED SIGNATORY
MUNICIPAL CLERK

BYLAW NUMBER 9232 BEING A BYLAW TO AMEND RZ #45/89
 BYLAW NUMBER 4742 BEING THE BURNABY ZONING BYLAW 1965

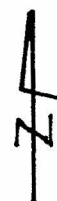
PROPERTY REZONED TO: CD COMPREHENSIVE DEVELOPMENT DISTRICT (BASED ON RM5 MULTIPLE FAMILY RESIDENTIAL ZONE USE AND DENSITY) MAP B

LOTS A, B AND C, LOTS 4, 5, 6, 7, 8 AND 9, THE NORTHERN 5 FEET OF LOT 20, THE NORTH HALF OF LOT 21, THE SOUTH HALF OF LOT 21, LOTS 22 AND 23, A PORTION OF LOT 10 AND A PORTION OF LOT 11, ALL OF BLOCK 33, D.L. 151, PLAN 2002, NWD



THE AREA(S) SHOWN ABOVE OUTLINED IN BLACK (—) IS (ARE) REZONED:

FROM: R5 RESIDENTIAL DISTRICT
 TO: CD COMPREHENSIVE DEVELOPMENT DISTRICT (BASED ON RM5 MULTIPLE FAMILY RESIDENTIAL ZONE USE AND DENSITY)



PLANNING DEPARTMENT		THE CORPORATION OF THE DISTRICT OF BURNABY	
SCALE	1:2000	OFFICIAL ZONING MAP	
DRAWN	E. P.		
DATE	1989 JULY		
		No. RZ 1738	