

THE CORPORATION OF THE DISTRICT OF BURNABY

BYLAW NO. 9227

A BYLAW to amend Bylaw No. 4742, being Burnaby Zoning Bylaw 1965, as amended by Bylaw No. 8957, being Burnaby Zoning Bylaw 1965, Amendment Bylaw No. 14, 1988

WHEREAS application for rezoning has been made to the Council.

AND WHEREAS the Council has held a public hearing thereon after duly giving notice of the hearing as prescribed by Sections 956 and 957 of the Municipal Act R.S.B.C. 1979.

NOW THEREFORE the Council of The Corporation of the District of Burnaby ENACTS as follows:

1. This Bylaw may be cited as BURNABY ZONING BYLAW 1965, AMENDMENT BYLAW NO. 47, 1989.
2. Bylaw No. 4742, as amended by Bylaw No. 8957 is further amended by striking out Section 3 of Bylaw No. 8957 and substituting therefor the following:

"3. The Comprehensive Development Plan entitled CARIBOO HEIGHTS CHURCH prepared by NORMAN B. DAVIS ARCHITECTURE and on file in the office of the Director Planning and Building Inspection, is deemed to be attached to and form part of this Bylaw and any development on the lands rezoned by this Bylaw shall be in conformity with the said Comprehensive Development Plan."

Read a first time this	10th	day of	JULY	1989
Read a second time this	8th	day of	AUGUST	1989
Read a third time this	11th	day of	JUNE	1990
Reconsidered and adopted this	9th	day of	JULY	1990

  
MAYOR

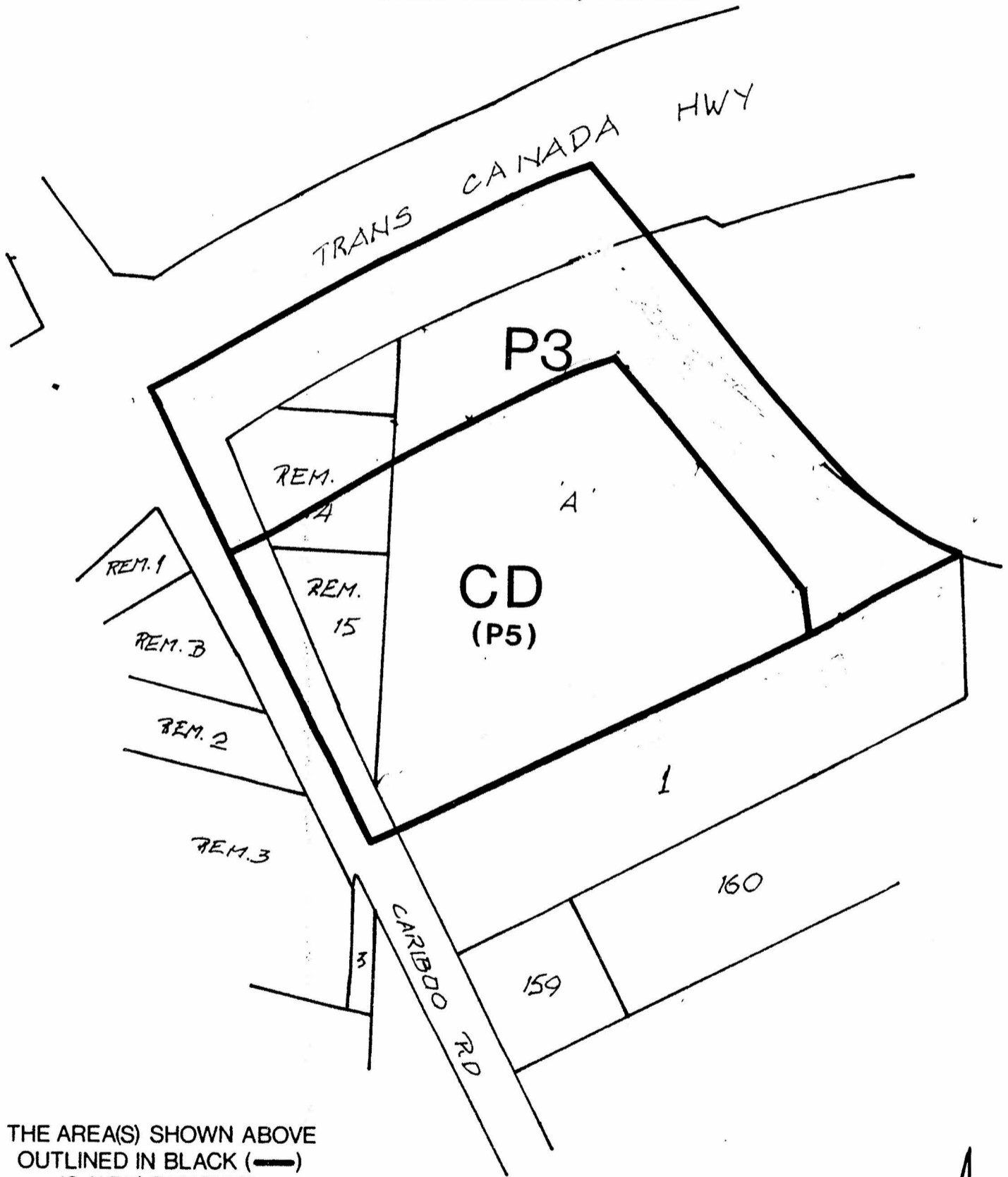
  
DEPUTY MUNICIPAL CLERK

BYLAW NUMBER 9227 BEING A BYLAW TO AMEND 19/89  
BYLAW NUMBER 4742 BEING THE BURNABY ZONING BYLAW 1965

PROPERTY REZONED TO: CD COMPREHENSIVE DEVELOPMENT DISTRICT  
(BASED ON P5 DISTRICT GUIDELINES)  
AND P3 PARK AND PUBLIC USE DISTRICT

MAP B

D.L. 13 & 14, LOT 14 EXC. PART ON PLAN 26009,  
LOT 15, EXC. PART ON PLAN 26009, PLAN 3047,  
PLAN A (EXP. PL. 11218) LOT 1 EXC. PART ON  
HIGHWAY PLAN 25870, PLAN 3046



THE AREA(S) SHOWN ABOVE  
OUTLINED IN BLACK (—)  
IS (ARE) REZONED:

FROM: CD COMPREHENSIVE DEVELOPMENT DISTRICT  
TO: CD COMPREHENSIVE DEVELOPMENT DISTRICT  
(BASED ON P5 DISTRICT GUIDELINES)  
AND P3 PARK AND PUBLIC USE DISTRICT



PLANNING DEPARTMENT		THE CORPORATION OF THE DISTRICT OF BURNABY	
SCALE	1:2000	OFFICIAL ZONING MAP	
DRAWN	E.T.		
DATE	1989 JULY		
		No. RZ 1733	