

THE CORPORATION OF THE DISTRICT OF BURNABY

BYLAW NO. 9210

A BYLAW to amend Bylaw No. 4742, being
Burnaby Zoning Bylaw 1965



WHEREAS application for rezoning has been made to the Council.

AND WHEREAS the Council has held a public hearing thereon after duly giving notice of the hearing as prescribed by sections 956 and 957 of the Municipal Act R.S.B.C. 1979.

NOW THEREFORE the Council of The Corporation of the District of Burnaby ENACTS as follows:

1. This Bylaw may be cited as BURNABY ZONING BYLAW 1965, AMENDMENT BYLAW NO. 40, 1989.
2. The map (hereinafter called "Map 'A'") attached to and forming an integral part of Bylaw No. 4742, being Burnaby Zoning Bylaw 1965, and designated as the Official Zoning Map of The Corporation of the District of Burnaby, is hereby amended according to the Map (hereinafter called "Map 'B'"), marginally numbered R.Z. 1726 annexed to this Bylaw, and in accordance with the explanatory legend, notations, references and boundaries designated, described, delimited and specified in particularity shown upon said Map 'B', and the various boundaries and districts shown upon said Map 'B', respectively are an amendment of and in substitution for the respective districts, designated and marked on said Map 'A' insofar as the same are changed, modified or varied thereby, and the said Map 'A' shall be deemed to be and is hereby declared to be amended accordingly and the said Map 'B' is hereby declared to be and shall form an integral part of said Map 'A' as if originally incorporated therein and shall be interpreted accordingly.

Read a first time this 29th day of MAY 1989
Read a second time this 26th day of JUNE 1989
Read a third time this 5th day of FEBRUARY 1990
Reconsidered and adopted this 2nd day of APRIL 1990


MAYOR

DEPUTY CLERK

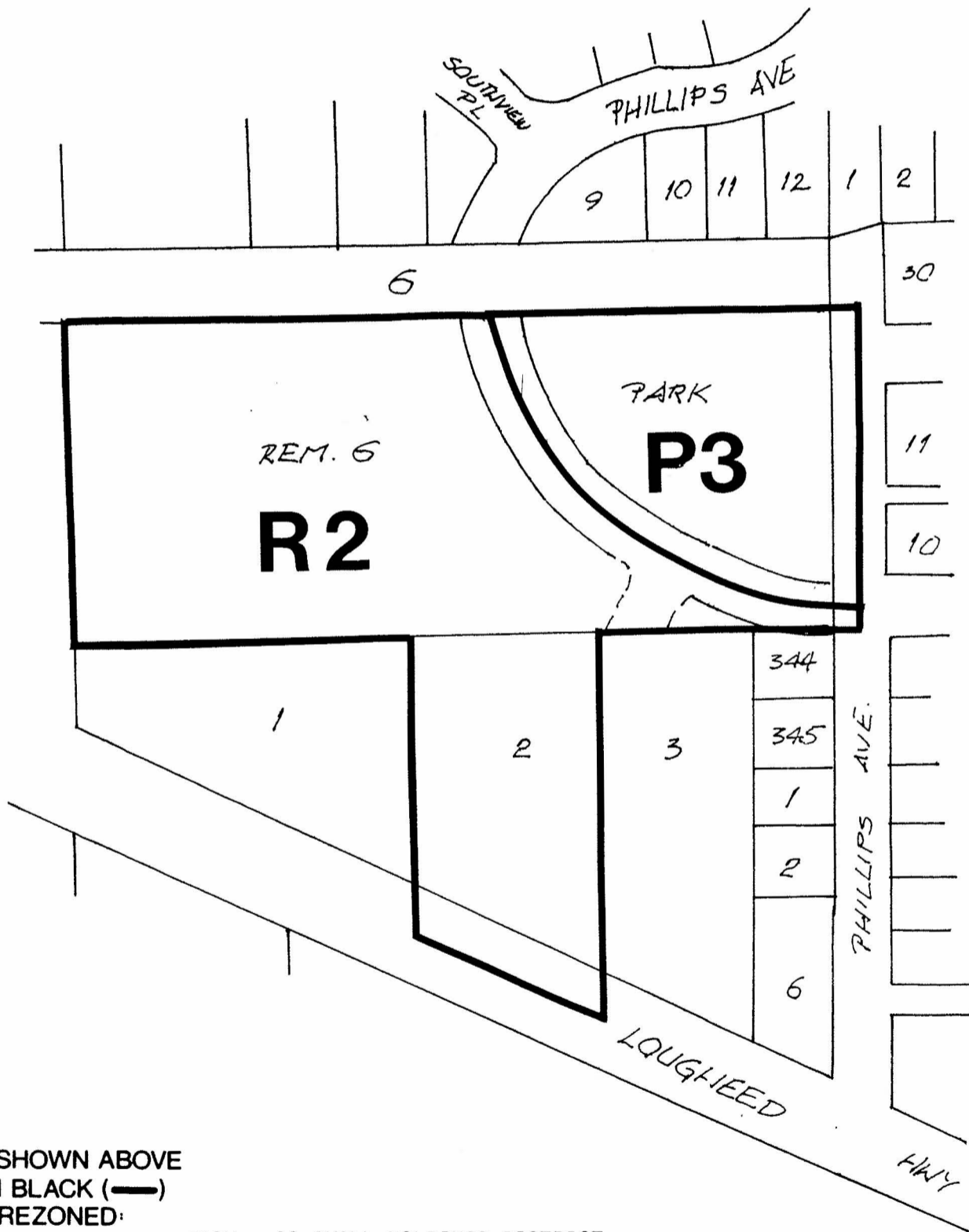
BYLAW NUMBER 9210 BEING A BYLAW TO AMEND RZ #32/89
BYLAW NUMBER 4742 BEING THE BURNABY ZONING BYLAW 1965

PROPERTY REZONED TO:

MAP "B"

R2 RESIDENTIAL DISTRICT & P3 PARK & PUBLIC USE DISTRICT

LEGAL: LOT 2, DISTRICT LOT 59, 136, 137, PLAN 12321;
REM. 6, PLAN 3050, DISTRICT LOT 59



THE AREA(S) SHOWN ABOVE
OUTLINED IN BLACK (—)
IS (ARE) REZONED:

FROM: A2 SMALL HOLDINGS DISTRICT
TO: R2 RESIDENTIAL DISTRICT &
P3 PARK AND PUBLIC USE DISTRICT

PLANNING
DEPARTMENT

THE CORPORATION OF THE DISTRICT OF BURNABY

SCALE 1:2000

DRAWN J.P.C.

DATE MAY 1989

OFFICIAL ZONING MAP

No. RZ 1726