

THE CORPORATION OF THE DISTRICT OF BURNABY

BYLAW NO. 9129

A BYLAW to stop up and close to traffic  
portions of road

WHEREAS those portions of road shown on the plan annexed hereto dedicated by Plan 1425 are no longer required for road purposes.


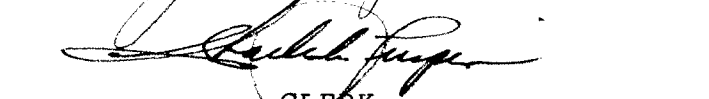
NOW THEREFORE the Council of The Corporation of the District of Burnaby ENACTS as follows:

1. This Bylaw may be cited as BURNABY ROAD CLOSING BYLAW NO. 5, 1988.
2. Those portions of road situate, lying and being in the Municipality of Burnaby, in the Province of British Columbia, more particularly described as those portions of road in District Lot 155A, Group 1, New Westminster District and dedicated by the deposit of Plan 1425, containing by admeasurement 1436 m<sup>2</sup> and 597.9 m<sup>2</sup>, respectively, shown outlined on the plan prepared by Ian C. MacDonald, B.C.L.S., certified correct the 18th day of November, 1988, a copy of which is annexed hereto, are hereby stopped up and closed to traffic.
3. The Municipal Clerk is hereby authorized and empowered to petition the Minister of Municipal Affairs to abandon the said portions of road more particularly described in section 2 hereof and vest title thereto in the name of The Corporation of the District of Burnaby.

Read a first time this 12th day of DECEMBER 1988  
Read a second time this 12th day of DECEMBER 1988  
Read a third time this 12th day of DECEMBER 1988  
Reconsidered and adopted this 3rd day of JANUARY 1989

CERTIFIED A TRUE COPY THIS  
5th DAY OF JANUARY 1989

  
AUTHORIZED SIGNATORY  
MUNICIPAL CLERK

  
MAYOR  
  
CLERK

# REFERENCE PLAN TO ACCOMPANY THE PLAN CORPORATION OF THE DISTRICT OF BURNABY ROAD CLOSING BY-LAW FOR PORTIONS OF ROAD IN D.L. 155A, GP. 1, N.W.D., DEDICATED BY PLAN 1425, PURSUANT TO SEC. 120, L.T.A.

Deposited in the Land Title  
Office at New Westminster, B.C.,  
this day of \_\_\_\_\_, 1988.

B.C.G.S. 926. 016

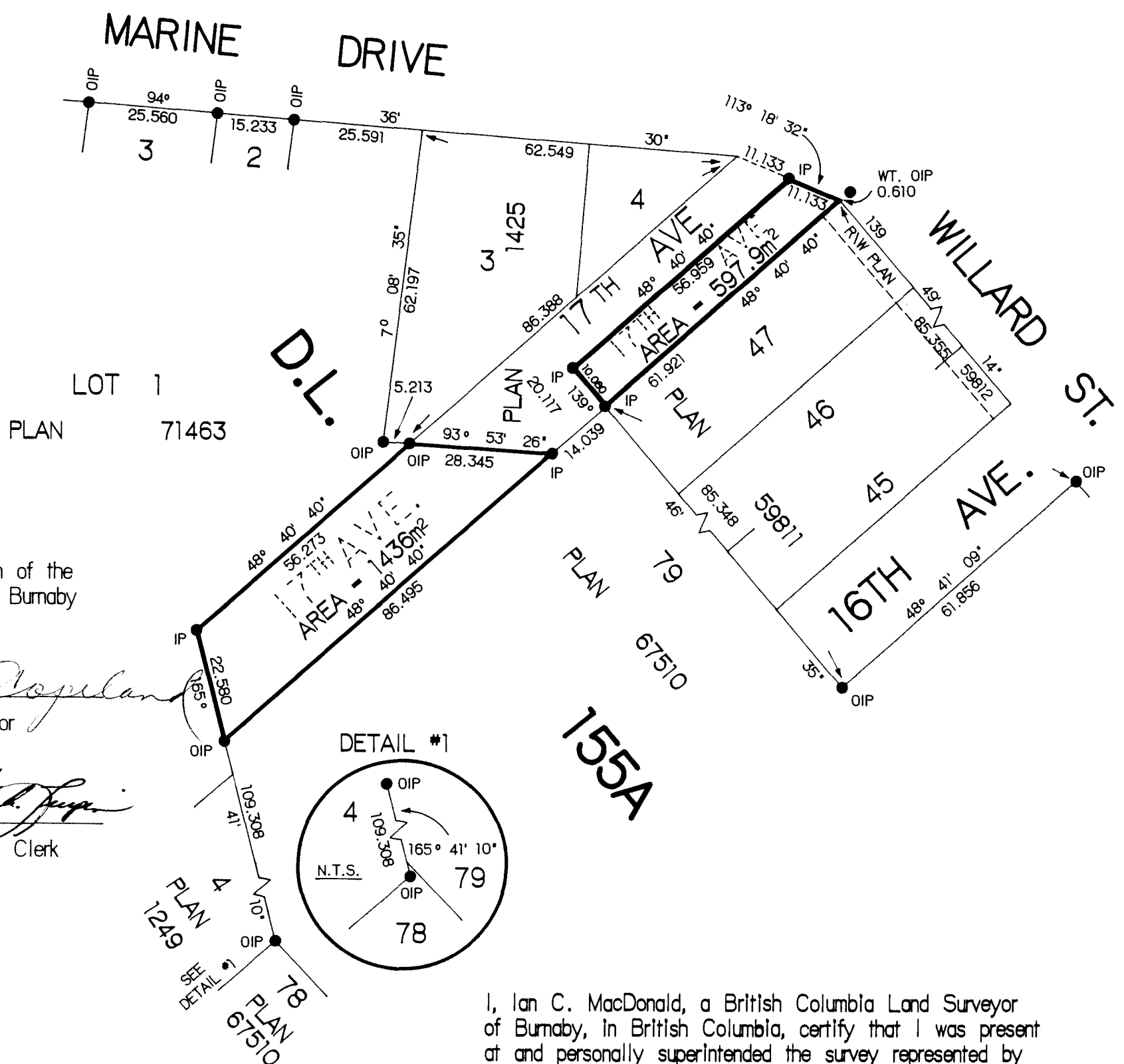
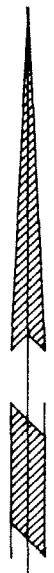
Scale : 1-1000



Registrar

**LEGEND**

- Bearings are astronomic and are derived from Plan 67510.  
Distances are in metres and decimals thereof.
- IP Denotes Iron post set.
  - OIP Denotes Iron post found.
  - WT Denotes Witness.



Corporation of the  
District of Burnaby

*[Signature]*  
Mayor

*[Signature]*  
Municipal Clerk

I, Ian C. MacDonald, a British Columbia Land Surveyor  
of Burnaby, in British Columbia, certify that I was present  
at and personally superintended the survey represented by  
this plan and that the survey and plan are correct. The  
said survey was completed on the 13<sup>th</sup> of November, 1988.

"This plan lies within the  
Greater Vancouver Regional District."

*[Signature]*  
B.C.L.S.