

THE CORPORATION OF THE DISTRICT OF BURNABY

BYLAW NO. 9078

A BYLAW to amend Bylaw No. 4742, being
Burnaby Zoning Bylaw 1965

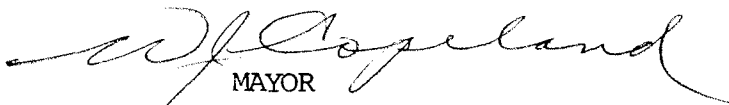

WHEREAS application for rezoning has been made to the Council.

AND WHEREAS the Council has held a public hearing thereon after duly giving notice of the hearing as prescribed by sections 956 and 957 of the Municipal Act R.S.B.C. 1979.

NOW THEREFORE the Council of The Corporation of the District of Burnaby ENACTS as follows:

1. This Bylaw may be cited as BURNABY ZONING BYLAW 1965, AMENDMENT BYLAW NO. 58, 1988.
2. The map (hereinafter called "Map 'A'") attached to and forming an integral part of Bylaw No. 4742, being Burnaby Zoning Bylaw 1965, and designated as the Official Zoning Map of The Corporation of the District of Burnaby, is hereby amended according to the Map (hereinafter called "Map 'B'"), marginally numbered R.Z. 1663 annexed to this Bylaw, and in accordance with the explanatory legend, notations, references and boundaries designated, described, delimited and specified in particularity shown upon said Map 'B', and the various boundaries and districts shown upon said Map 'B', respectively are an amendment of and in substitution for the respective districts, designated and marked on said Map 'A' insofar as the same are changed, modified or varied thereby, and the said Map 'A' shall be deemed to be and is hereby declared to be amended accordingly and the said Map 'B' is hereby declared to be and shall form an integral part of said Map 'A' as if originally incorporated therein and shall be interpreted accordingly.

Read a first time this 8th day of AUGUST 1988
Read a second time this 6th day of SEPTEMBER 1988
Read a third time this 19th day of JUNE 1989
Reconsidered and adopted this 26th day of JUNE 1989

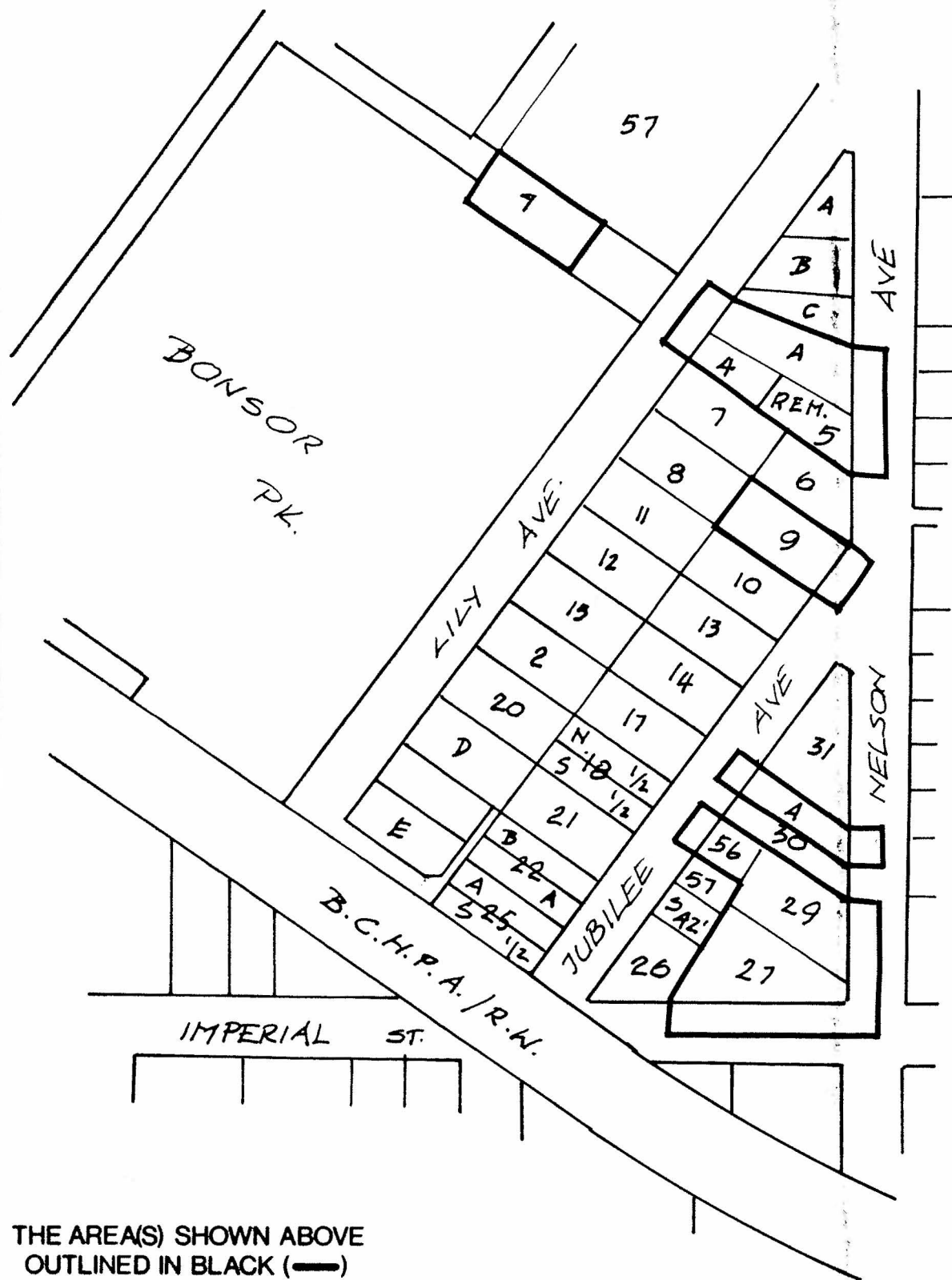

MAYOR

CLERK

BYLAW NUMBER 9078 BEING A BYLAW TO AMEND RZ #61/88
 BYLAW NUMBER 4742 BEING THE BURNABY ZONING BYLAW 1965

PROPERTY REZONED TO: P3 PARK & PUBLIC USE DISTRICT

MAP B

D.L. 152, Lot 7, P1. 2001; D.L. 152, Lot 27, P1. 2000; D.L. 152, Lot 9, P1. 2000;
 D.L. 152, Blk. 25, Lot 30, P1. 2000; D.L. 152, Lot 56, P1. 25680; D.L. 152, Blk.
 25, Lot 4, Pcl. D, Ref. P1. 4797, P1. 2000; D.L. 152, Blk. 25, Lot A, P1. 6387;
 D.L. 152, Blk. 25, Rem. 5 Ex. Pt. on P1. 6387, P1. 2000; D.L. 152, Lot 29, P1. 2000



THE AREA(S) SHOWN ABOVE
 OUTLINED IN BLACK (—)
 IS (ARE) REZONED:

FROM: C2 COMMUNITY COMMERCIAL DISTRICT & R5 RESIDENTIAL DISTRICT



PLANNING DEPARTMENT	
SCALE	1:2000
DRAWN	E. P.
DATE	1988 AUG

THE CORPORATION OF THE DISTRICT OF BURNABY

OFFICIAL ZONING MAP

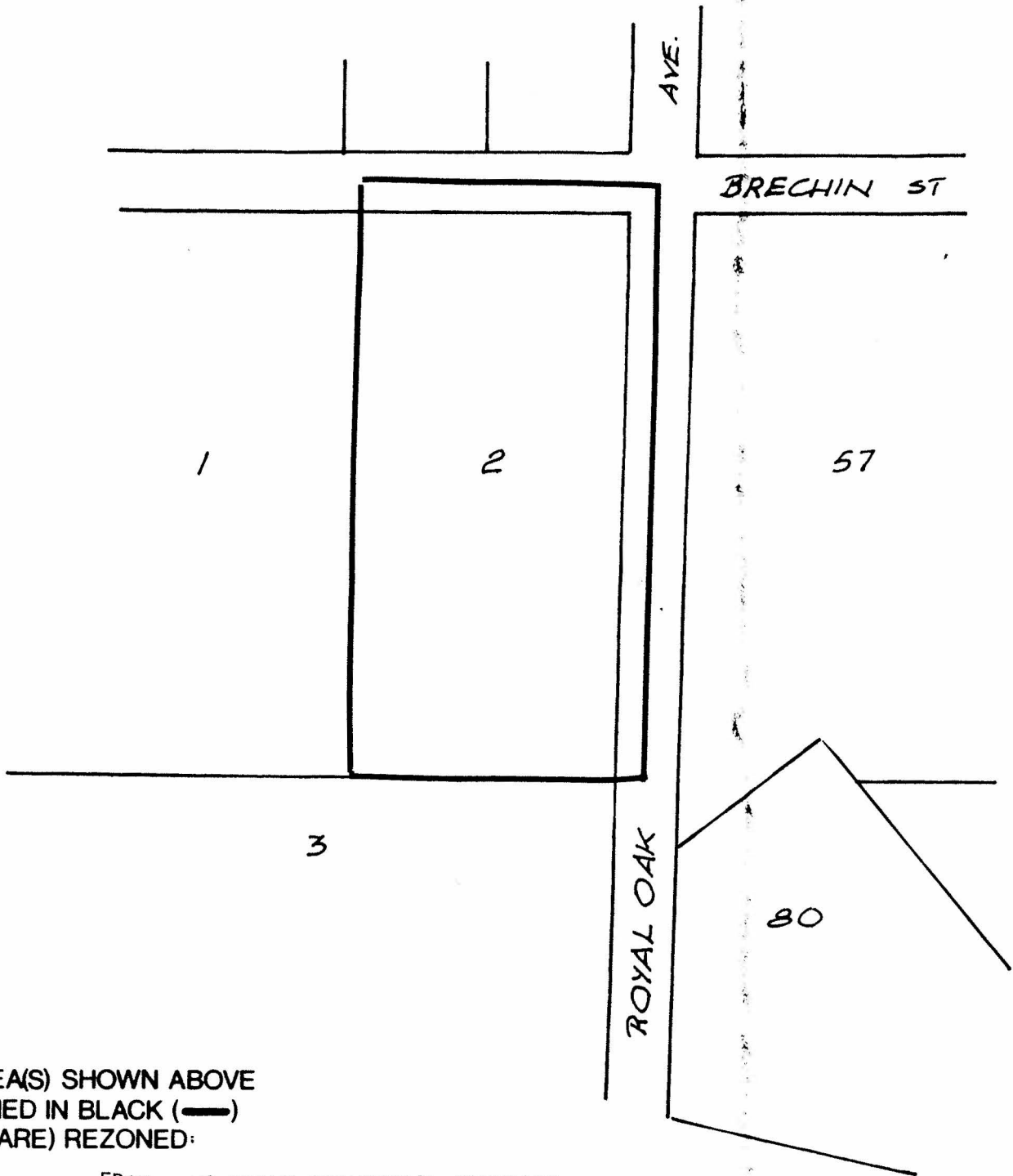
No. RZ 1663

BYLAW NUMBER 9078 BEING A BYLAW TO AMEND RZ #61/88
 BYLAW NUMBER 4742 BEING THE BURNABY ZONING BYLAW 1965

PROPERTY REZONED TO: P3 PARK & PUBLIC USE DISTRICT

MAP B

D.L. 162, LOT 2, PLAN 7195



THE AREA(S) SHOWN ABOVE
 OUTLINED IN BLACK (—)
 IS (ARE) REZONED:

FROM: M3 HEAVY INDUSTRIAL DISTRICT
 TO : P3 PARK AND PUBLIC USE DISTRICT

PLANNING DEPARTMENT		THE CORPORATION OF THE DISTRICT OF BURNABY	
SCALE	1:2000	OFFICIAL ZONING MAP	
DRAWN	E. P.		
DATE	1988 AUG.		
		No. RZ	1663

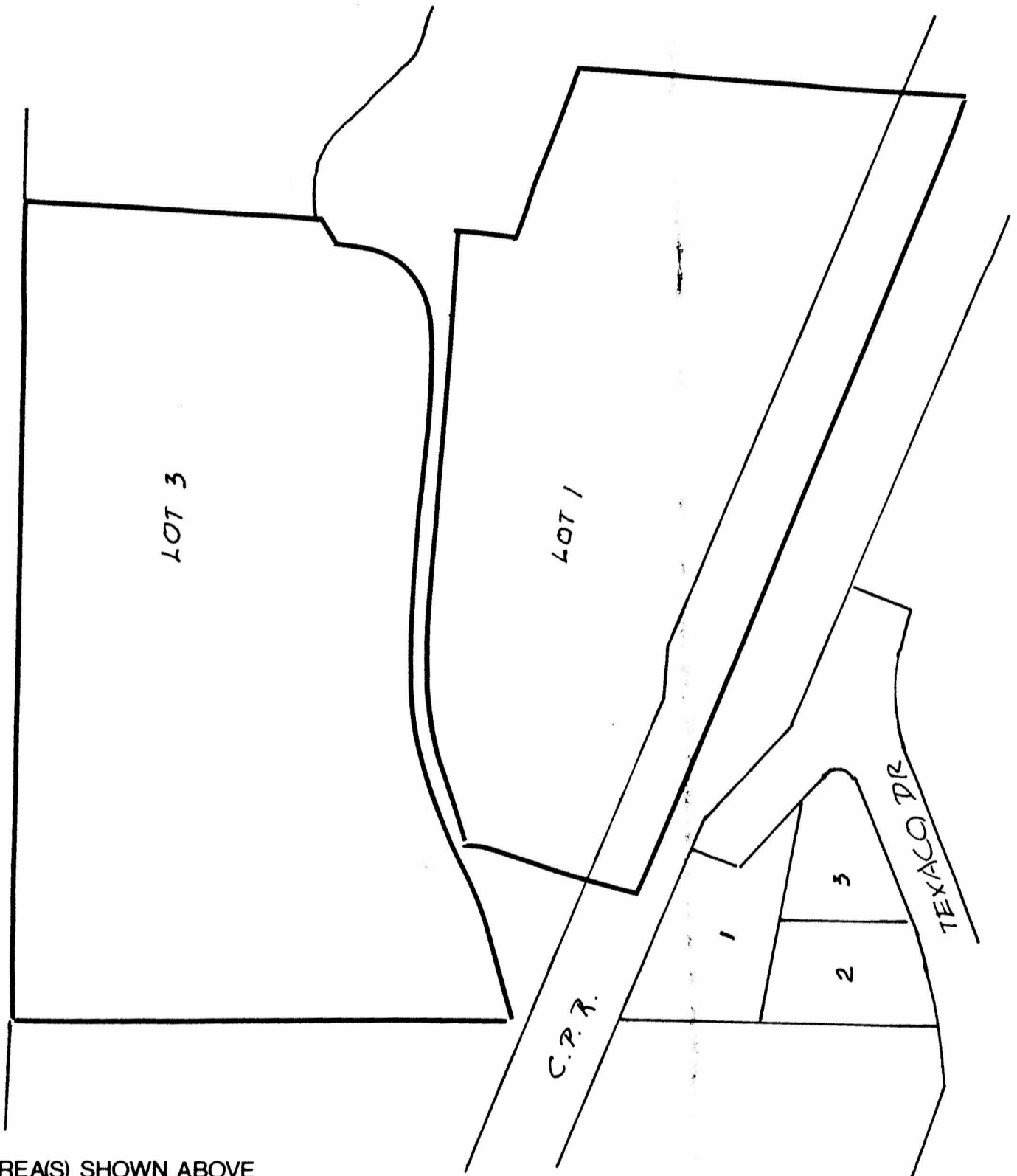
BYLAW NUMBER 9078 BEING A BYLAW TO AMEND RZ #61/88
 BYLAW NUMBER 4742 BEING THE BURNABY ZONING BYLAW 1965

PROPERTY REZONED TO: P3 PARK & PUBLIC USE DISTRICT

MAP B

D.L. 214, LOT 1, PLAN 49510

D.L. 214, LOT 3, PLAN 49510



THE AREA(S) SHOWN ABOVE
 OUTLINED IN BLACK (—)
 IS (ARE) REZONED:

FROM: M7A MARINE DISTRICT
 TO : P3 PARK & PUBLIC USE DISTRICT

PLANNING DEPARTMENT	
SCALE	1:2000
DRAWN	E.P.
DATE	1988 AUG

THE CORPORATION OF THE DISTRICT OF BURNABY

OFFICIAL ZONING MAP

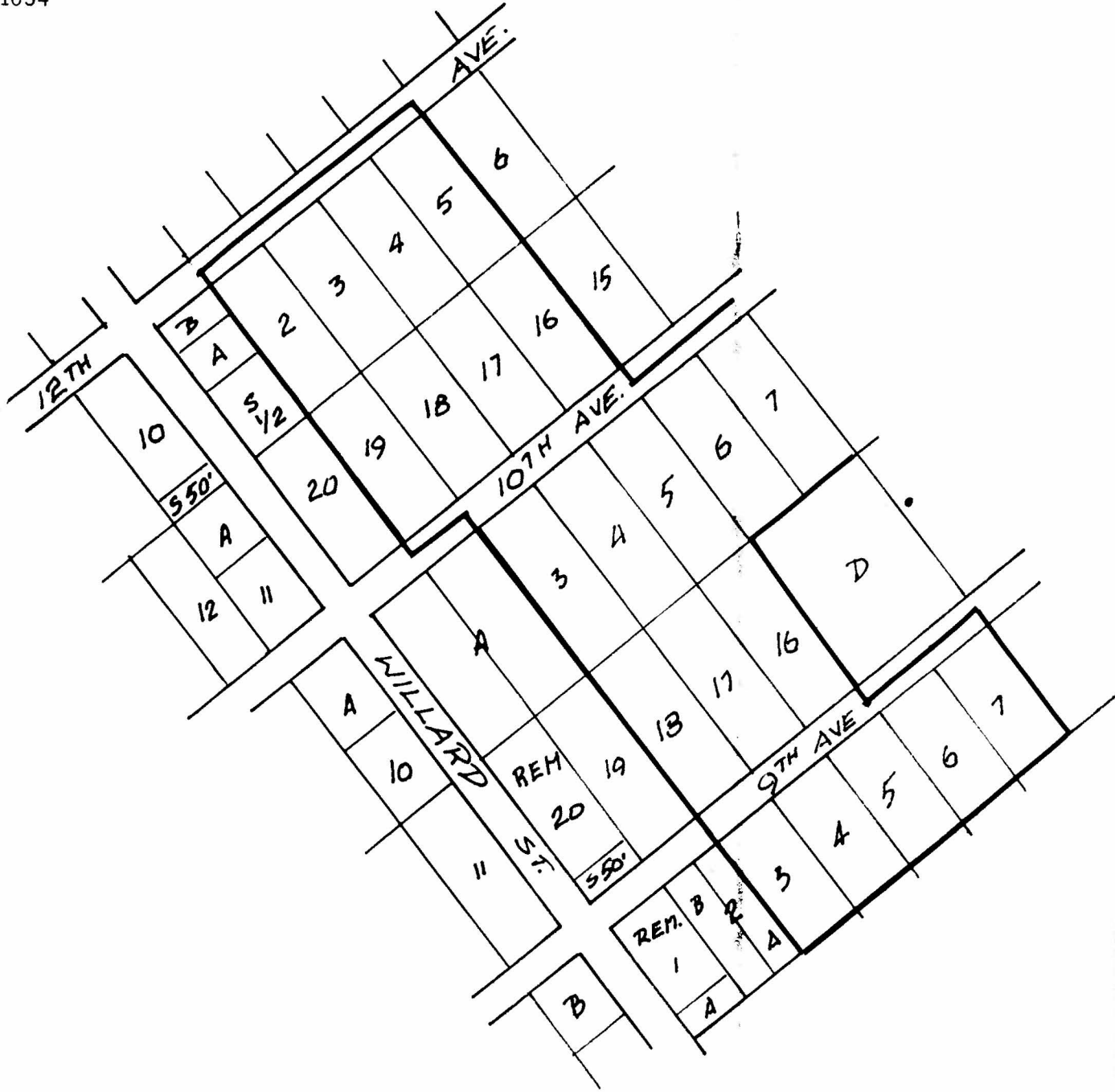
No. RZ 1663

BYLAW NUMBER 9078 BEING A BYLAW TO AMEND RZ #61/88
 BYLAW NUMBER 4742 BEING THE BURNABY ZONING BYLAW 1965

PROPERTY REZONED TO: P3 PARK AND PUBLIC USE DISTRICT

MAP B

D.L. 173, Blk. 4, Lot 2, Pl. 1034; D.L. 173, Blk. 4, Lot 3, Pl. 1034; D.L. 173, Blk. 4, Lot 4, Pl. 1034; D.L. 173, Blk. 4, Lot 5, Pl. 1034; D.L. 173, Blk. 4, Lot 19, Pl. 1034; D.L. 173, Blk. 4, Lot 18, Pl. 1034; D.L. 173, Blk. 6, Lot 3, Pl. 1034; D.L. 173, Blk. 6, Lot 4, Pl. 1034; D.L. 173, Blk. 4, Lot 16, Pl. 1034; D.L. 173, Blk. 6, Lot 5, Pl. 1034; D.L. 173, Blk. 6, Lot 6, Plan 1034; D.L. 173, Blk. 6, Lot 7, Plan 1034; D.L. 173, Blk. 8, Lot 3, Plan 1034; D.L. 173, Blk. 6, Lot 18, Plan 1034; D.L. 173, Blk. 8, Lot 4, Pl. 1034; D.L. 173, Blk. 6, Lot 17, Pl. 1034; D.L. 173, Blk. 8, Lot 5, Pl. 1034; D.L. 173, Blk. 6, Lot 16, Pl. 1034; D.L. 173, Blk. 8, Lot 6, Pl. 1034; D.L. 173, Blk. 8, Lot 7, Pl. 1034



THE AREA(S) SHOWN ABOVE
 OUTLINED IN BLACK (—)
 IS (ARE) REZONED:

FROM: A2 SMALL HOLDING DISTRICT
 TO : P3 PARK AND PUBLIC USE DISTRICT



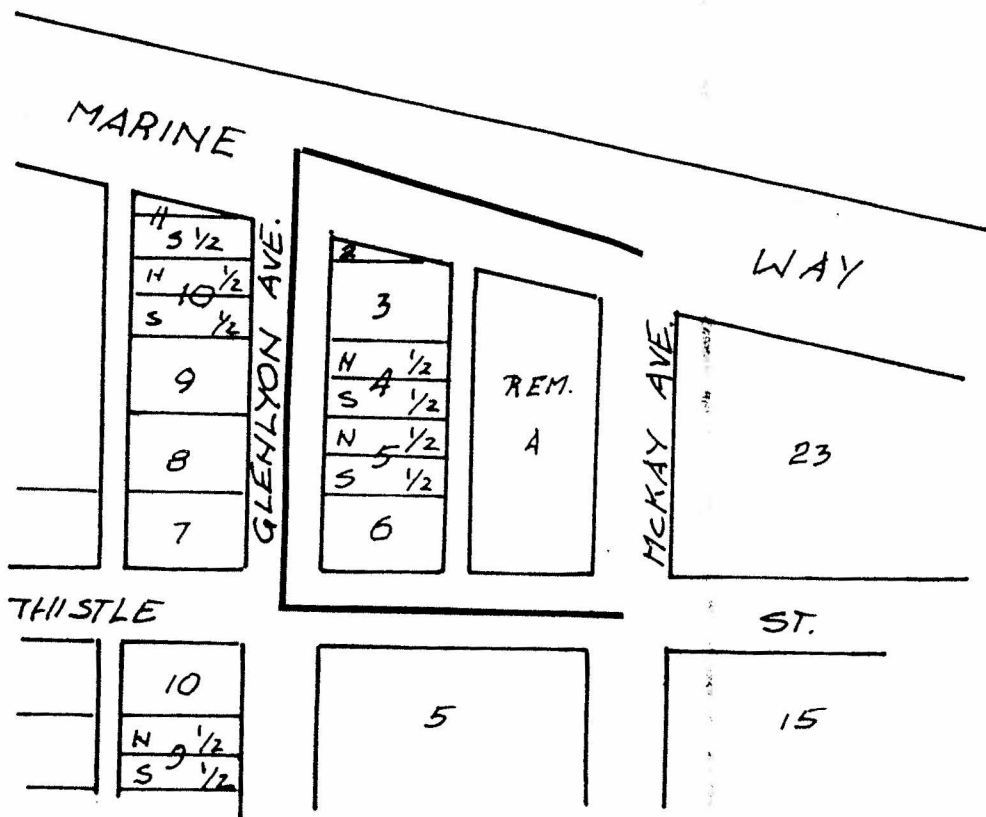
PLANNING DEPARTMENT		THE CORPORATION OF THE DISTRICT OF BURNABY	
SCALE	N. T. S.	OFFICIAL ZONING MAP	
DRAWN	E. P.		
DATE	1988 AUG		
		No. RZ	1663

BYLAW NUMBER 9078 BEING A BYLAW TO AMEND RZ #61/1
 BYLAW NUMBER 4742 BEING THE BURNABY ZONING BYLAW 1965

PROPERTY REZONED TO: P3 PARK & PUBLIC USE DISTRICT

MAP B

D.L. 164, BLK. 10, LOT 2, EXC. PL. 28625, PL. 2692; D.L. 164, BLK. 10, LOT 3, EXC. PL. 28625, PL. 2692; D.L. 164, BLK. 10, LOT 4, N 1/2, PL. 2692; D.L. 164, BLK. 10, LOT 4, S 1/2, PL. 2692; D.L. 164, BLK. 10, LOT 5, N 1/2, PL. 2692; D.L. 164, BLK. 10, LOT 5, S 1/2, PL. 2692; D.L. 164, BLK. 10, LOT 6, PL. 2692; D.L. 164, BLK. 10, LOT A, EXC. PL. 28625, PL. 3394.



THE AREA(S) SHOWN ABOVE
 OUTLINED IN BLACK (—)
 IS (ARE) REZONED:

FROM: M3 HEAVY INDUSTRIAL DISTRICT
 TO : P3 PARK & PUBLIC USE DISTRICT



PLANNING DEPARTMENT	
SCALE	1:2000
DRAWN	E.P.
DATE	1988 AUG

THE CORPORATION OF THE DISTRICT OF BURNABY

OFFICIAL ZONING MAP

No. RZ 1663