

THE CORPORATION OF THE DISTRICT OF BURNABY

BYLAW NO. 9058

A BYLAW to exempt from taxation certain lands and improvements pursuant to section 399(3) of the Municipal Act

WHEREAS in the opinion of Council certain lands and improvements would qualify for exemption from taxation but for a secondary use;

AND WHEREAS such secondary use consists of the use of a portion of the land and improvements for commercial purposes;

NOW THEREFORE the Council of The Corporation of the District of Burnaby ENACTS as follows:

1. This Bylaw may be cited as BURNABY TAXATION EXEMPTION BYLAW NO. 8, 1988.
2. Pursuant to section 399(3) of the Municipal Act, the Council does hereby for the year 1989 exempt from taxation under the said Act, except for charges under sections 612(1)(a) and (c), 614, 640 and 641(1)(a), (b) and (c) thereof, the following lands and improvements, namely:

ST. ANDREW'S ANGLICAN CHURCH

3426 Smith Avenue

Roll No. 5205-3426

That portion of land occupied by ST. ANDREW'S ANGLICAN CHURCH described as follows:

ALL AND SINGULAR that certain parcel or tract of land and premises situate, lying and being Parcel 1, District Lot 68, Group 1, New Westminster District, Reference Plan 67676, Province

of British Columbia, SAVE AND EXCEPT the area occupied by the daycare centre and a proportionate area of the land as shown on plan annexed to Bylaw No. 9058, filed in the Land Title Office in New Westminster.

Read a first time this 25th day of JULY 1988

Read a second time this 25th day of JULY 1988

Read a third time this 25th day of JULY 1988

Reconsidered and adopted by an affirmative vote of at least two-thirds of all members of Council this 8th day of AUGUST 1988

ACTING

MAYOR

CLERK

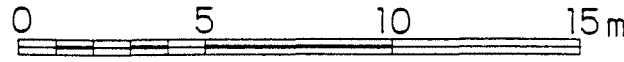
Le Parker
Robert J. [unclear]

PLAN TO ACCOMPANY THE CORPORATION OF THE DISTRICT OF BURNABY TAX EXEMPTION BY-LAW NO. 68, GP. 1, PLAN 980, N.W.D. FOR A PORTION OF PARCEL 1, (REFERENCE PLAN 67676) OF D.L.

PURSUANT TO SEC. 399(2) OF THE MUNICIPAL ACT, 90°

5205-3426

Scale 1:200



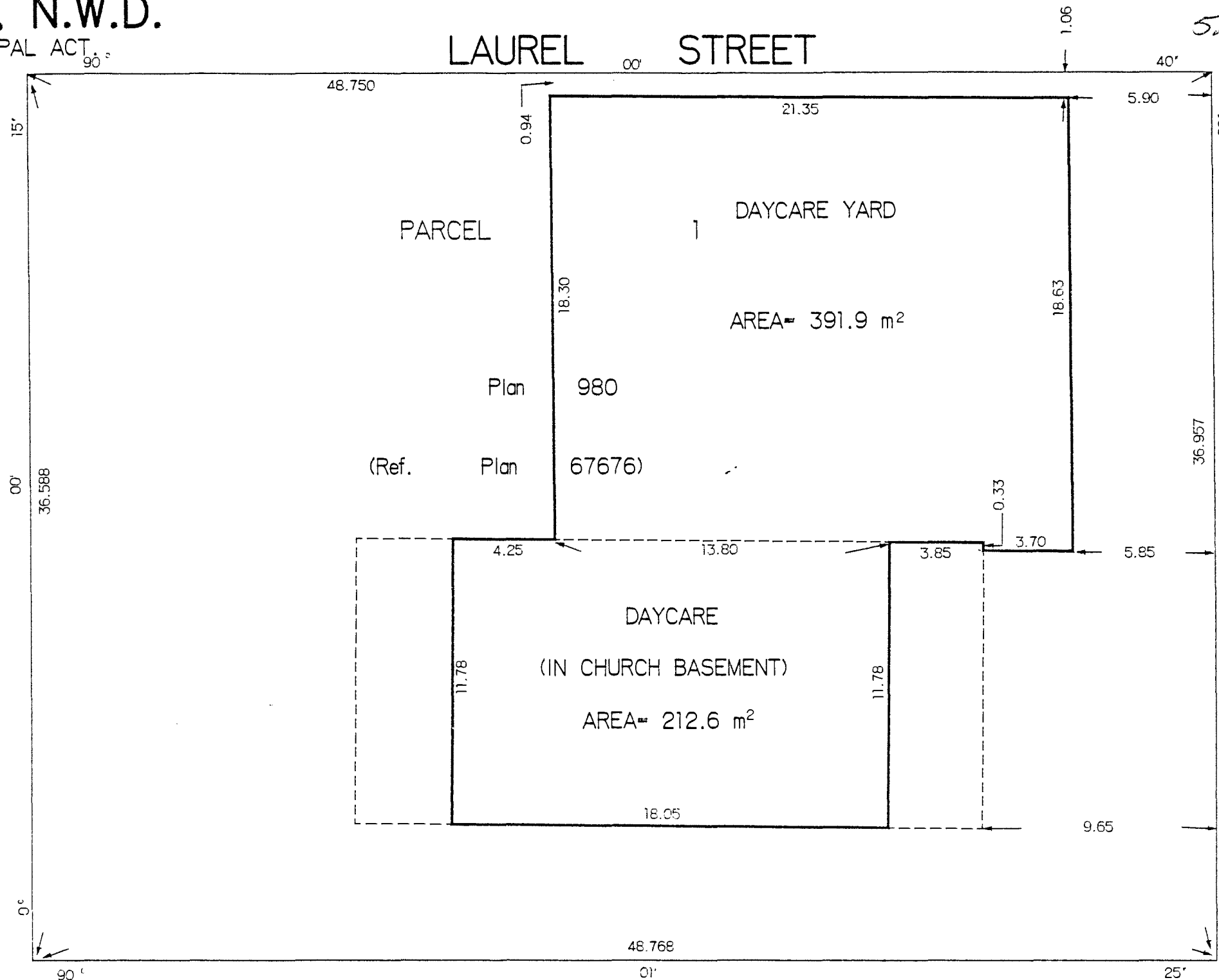
Distances are in metres and decimals thereof. Bearings are astronomic and are derived from Ref. Plan 67676. m² denotes square metres.

Table of Reference

Taxable Area	
Daycare Playground	391.9 m ²
Daycare (in basement)	212.6 m ²
Total Taxable Area	604.5 m ²
Tax Exempt Area	1179.6 m ²

AVE.

SMITH



The Corporation of the District of Burnaby

LANE

I certify this plan to be correct. Dated this 28th day of January, 1988.

Municipal Clerk

RC Peterson
B.C.L.S.