

THE CORPORATION OF THE DISTRICT OF BURNABY

BYLAW NO. 9038

A BYLAW to amend Bylaw No. 4742, being Burnaby Zoning Bylaw 1965, as amended by Bylaw No. 6457, being Burnaby Zoning Bylaw 1965, Amendment Bylaw No. 19, 1974

WHEREAS application for rezoning has been made to the Council.

AND WHEREAS the Council has held a public hearing thereon after duly giving notice of the hearing as prescribed by Sections 956 and 957 of the Municipal Act R.S.B.C. 1979.

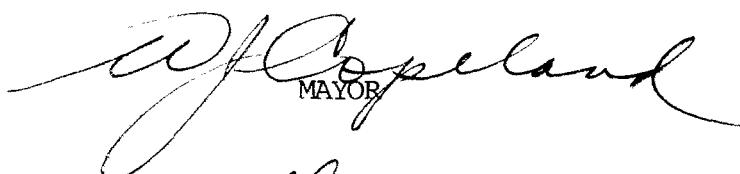
NOW THEREFORE the Council of The Corporation of the District of Burnaby ENACTS as follows:

1. This Bylaw may be cited as BURNABY ZONING BYLAW 1965, AMENDMENT BYLAW NO. 44, 1988.

2. Bylaw No. 4742, as amended by Bylaw No. 6457 is further amended by striking out Section 3 of Bylaw No. 6457 and substituting therefor the following:

"3. The Comprehensive Development Plan entitled AMENDED COMPREHENSIVE DEVELOPMENT/FRASER PARK DRIVE prepared by WALES McLELLAND CONSTRUCTION CO. LTD. and on file in the office of the Director Planning and Building Inspection, is deemed to be attached to and form part of this Bylaw and any development on the lands rezoned by this Bylaw shall be in conformity with the said Comprehensive Development Plan."

Read a first time this	27th	day of	JUNE	198 <sup>8</sup>
Read a second time this	25th	day of	JULY	198 <sup>8</sup>
Read a third time this	17th	day of	OCTOBER	1988
Reconsidered and adopted this	24th	day of	OCTOBER	198 <sup>8</sup>

  
MAYOR



DEPUTY MUNICIPAL CLERK

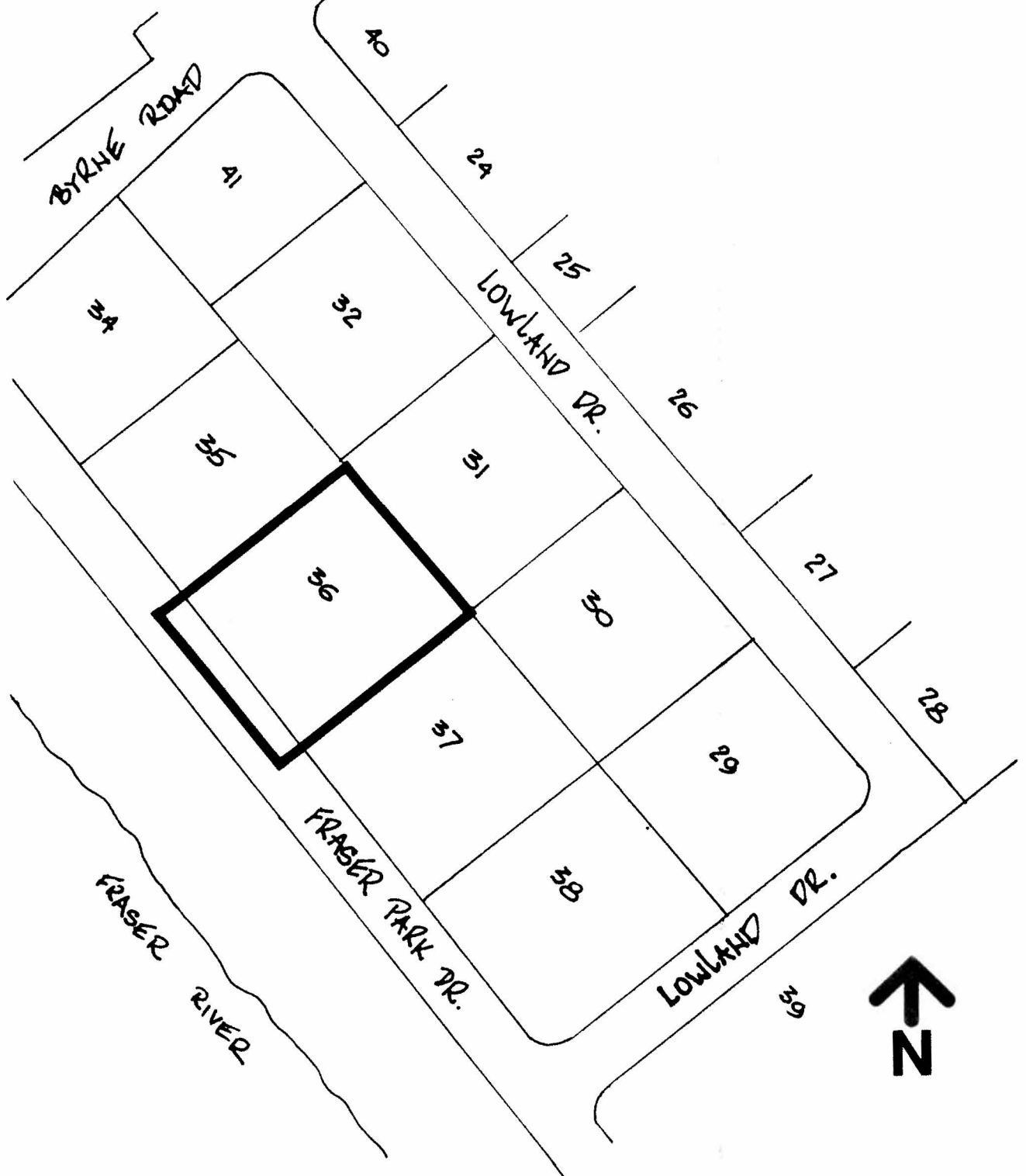
BYLAW NUMBER 9038 BEING A BYLAW TO AMEND  
BYLAW NUMBER 4742 BEING THE BURNABY ZONING BYLAW 1965

PROPERTY REZONED TO:

MAP "B"

AMENDED CD COMPREHENSIVE DEVELOPMENT DISTRICT

LOT 36, D.L. 166A, PLAN 48494



THE AREA(S) SHOWN ABOVE  
OUTLINED IN BLACK (—)  
IS (ARE) REZONED:

FROM: CD COMPREHENSIVE DEVELOPMENT (M1/M5 GUIDELINES)

TO : AMENDED CD COMPREHENSIVE DEVELOPMENT (M1/M5 GUIDELINES)

PLANNING DEPARTMENT	
SCALE	1:2000
DRAWN	
DATE	JUNE 1988

THE CORPORATION OF THE DISTRICT OF BURNABY

OFFICIAL ZONING MAP

No. RZ 1649