

THE CORPORATION OF THE DISTRICT OF BURNABY

BYLAW NO. 9021

A BYLAW to amend Bylaw No. 4742, being Burnaby Zoning Bylaw 1965, as amended by Bylaw No. 7568, being Burnaby Zoning Bylaw 1965, Amendment Bylaw No. 44, 1980

WHEREAS application for rezoning has been made to the Council.


AND WHEREAS the Council has held a public hearing thereon after duly giving notice of the hearing as prescribed by Sections 956 and 957 of the Municipal Act R.S.B.C. 1979.


NOW THEREFORE the Council of The Corporation of the District of Burnaby ENACTS as follows:

1. This Bylaw may be cited as BURNABY ZONING BYLAW 1965, AMENDMENT BYLAW NO. 41, 1988.
2. Bylaw No. 4742, as amended by Bylaw No. 7568 is further amended by striking out Section 3 of Bylaw No. 7568 and substituting therefor the following:

"3. The Comprehensive Development Plan entitled WILLINGDON SITE- DISCOVERY PARK COMMUNITY PLAN prepared by the BURNABY PLANNING AND BUILDING INSPECTION DEPARTMENT, RUSSELL VANDIVER, ARCHITECT AND GARDNER ASSOCIATES ARCHITECTS and on file in the office of the Director Planning and Building Inspection, is deemed to be attached to and form part of this Bylaw and any development on the lands rezoned by this Bylaw shall be in conformity with the said Comprehensive Development Plan."

Read a first time this	30th	day of	MAY	1988
Read a second time this	25th	day of	JULY	1988
Read a third time this	25th	day of	JULY	1988
Reconsidered and adopted this	14th	day of	NOVEMBER	1988

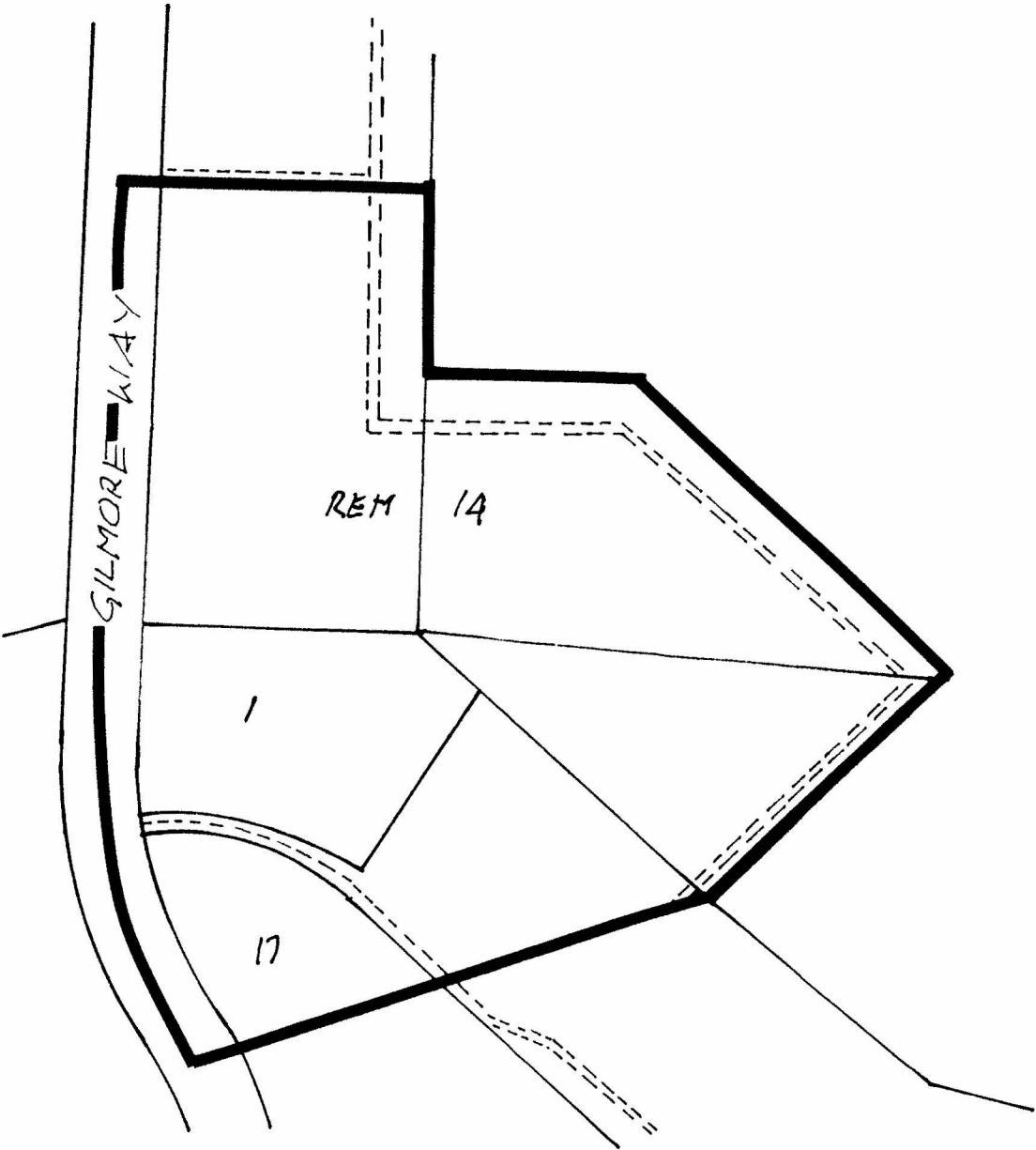

MAYOR


CLERK

BYLAW NUMBER 9021 BEING A BYLAW TO AMEND
BYLAW NUMBER 4742 BEING THE BURNABY ZONING BYLAW 1965

PROPERTY REZONED TO: AMENDED CD COMPREHENSIVE DEVELOPMENT DISTRICT MAP "B"
AND P6 REGIONAL INSTITUTIONAL DISTRICT

PTN. LOT 14 EXC. PCL. A (B/L 60615) PART SUBDIVIDED
BY PLAN 60616 & PLAN 64401, DISTRICT LOTS 71 & 72,
GROUP 1, NWD, PLAN 59477



THE AREA(S) SHOWN ABOVE
OUTLINED IN BLACK (—)
IS (ARE) REZONED:

FROM: CD COMPREHENSIVE DEVELOPMENT DISTRICT

TO: AMENDED CD COMPREHENSIVE DEVELOPMENT DISTRICT
(based on Discovery Parks Community Plan guidelines)
& P6 REGIONAL INSTITUTIONAL DISTRICT

PLANNING DEPARTMENT		THE CORPORATION OF THE DISTRICT OF BURNABY	
SCALE	N. T. S.	OFFICIAL ZONING MAP	
DRAWN	E. P.		
DATE	1988 JUNE		
		No. RZ 1647	