

THE CORPORATION OF THE DISTRICT OF BURNABY

BYLAW NO. 9019

A BYLAW to amend Bylaw No. 4742, being Burnaby  
Zoning Bylaw 1965, as amended by Bylaw  
No. 7568, being Burnaby Zoning Bylaw 1965,  
Amendment Bylaw No. 44, 1980

WHEREAS application for rezoning has been made to the Council.

AND WHEREAS the Council has held a public hearing thereon after duly giving notice of the hearing as prescribed by Sections 956 and 957 of the Municipal Act R.S.B.C. 1979.

NOW THEREFORE the Council of The Corporation of the District of Burnaby ENACTS as follows:

1. This Bylaw may be cited as BURNABY ZONING BYLAW 1965, AMENDMENT BYLAW NO. 39, 1988.

2. Bylaw No. 4742, as amended by Bylaw No. 7568 is further amended by striking out Section 3 of Bylaw No. 7568 and substituting therefor the following:

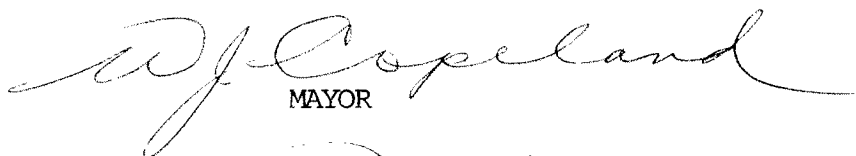
"3. The Comprehensive Development Plan entitled WILLINGDON SITE- DISCOVERY PARK COMMUNITY PLAN prepared by WALES McLELLAND CONSTRUCTION CO. LTD. and on file in the office of the Director Planning and Building Inspection, is deemed to be attached to and form part of this Bylaw and any development on the lands rezoned by this Bylaw shall be in conformity with the said Comprehensive Development Plan."


Read a first time this 30th day of MAY 1988

Read a second time this 27th day of JUNE 1988

Read a third time this 1st day of NOVEMBER 1988

Reconsidered and adopted this 14th day of NOVEMBER 1988

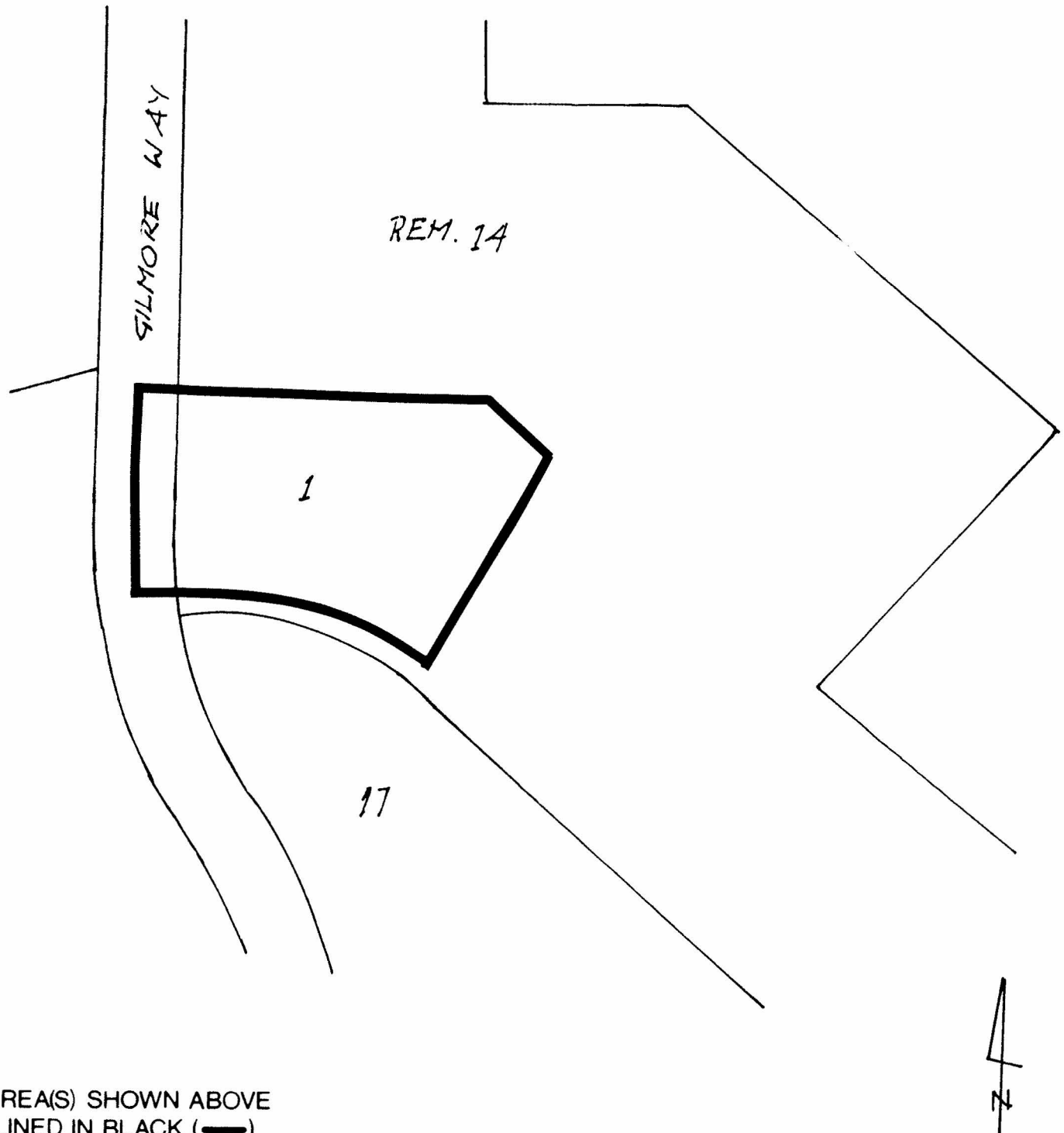
  
MAYOR

  
CLERK

BYLAW NUMBER 9019 BEING A BYLAW TO AMEND  
BYLAW NUMBER 4742 BEING THE BURNABY ZONING BYLAW 1965

PROPERTY REZONED TO: AMENDED CD COMPREHENSIVE DEVELOPMENT DISTRICT MAP "B"

PTN. OF LOT 14 EXC. FIRSTLY: PCL. "A" (B/L 60615),  
SECONDLY: PART SUBDIVIDED BY PLAN 60616 AND  
THIRDLY: PT. SUBDIVIDED BY PLAN 64401, D.L. 71 & 72,  
PLAN 59477



THE AREA(S) SHOWN ABOVE  
OUTLINED IN BLACK (—)  
IS (ARE) REZONED:

FROM: CD COMPREHENSIVE DEVELOPMENT DISTRICT

TO: AMENDED COMPREHENSIVE DEVELOPMENT DISTRICT  
(based on Discovery Parks Community Plan guidelines)

PLANNING  
DEPARTMENT

THE CORPORATION OF THE DISTRICT OF BURNABY

SCALE N.T.S.

DRAWN E.P.

OFFICIAL ZONING MAP

DATE 1988 JUNE

No. RZ 1645