

THE CORPORATION OF THE DISTRICT OF BURNABY

BYLAW NO. 9014

A BYLAW to amend Bylaw No. 4742, being Burnaby Zoning Bylaw 1965, as amended by Bylaw No. 8830, being Burnaby Zoning Bylaw 1965, Amendment Bylaw No. 81, 1987

WHEREAS application for rezoning has been made to the Council.

AND WHEREAS the Council has held a public hearing thereon after duly giving notice of the hearing as prescribed by Sections 956 and 957 of the Municipal Act R.S.B.C. 1979.

NOW THEREFORE the Council of The Corporation of the District of Burnaby ENACTS as follows:

1. This Bylaw may be cited as BURNABY ZONING BYLAW 1965, AMENDMENT BYLAW NO. 34, 1988.

2. Bylaw No. 4742, as amended by Bylaw No. 8830 is further amended by striking out Section 3 of Bylaw No. 8830 and substituting therefor the following:

"3. The Comprehensive Development Plan entitled BRAMBLES HOUSING COOPERATIVE prepared by EDWARD DE GREY ARCHITECTS and on file in the office of the Director Planning and Building Inspection, is deemed to be attached to and form part of this Bylaw and any development on the lands rezoned by this Bylaw shall be in conformity with the said Comprehensive Development Plan."

Read a first time this	30th	day of	MAY	1988
Read a second time this	27th	day of	JUNE	1988
Read a third time this	17th	day of	OCTOBER	1988
Reconsidered and adopted this	7th	day of	NOVEMBER	1988

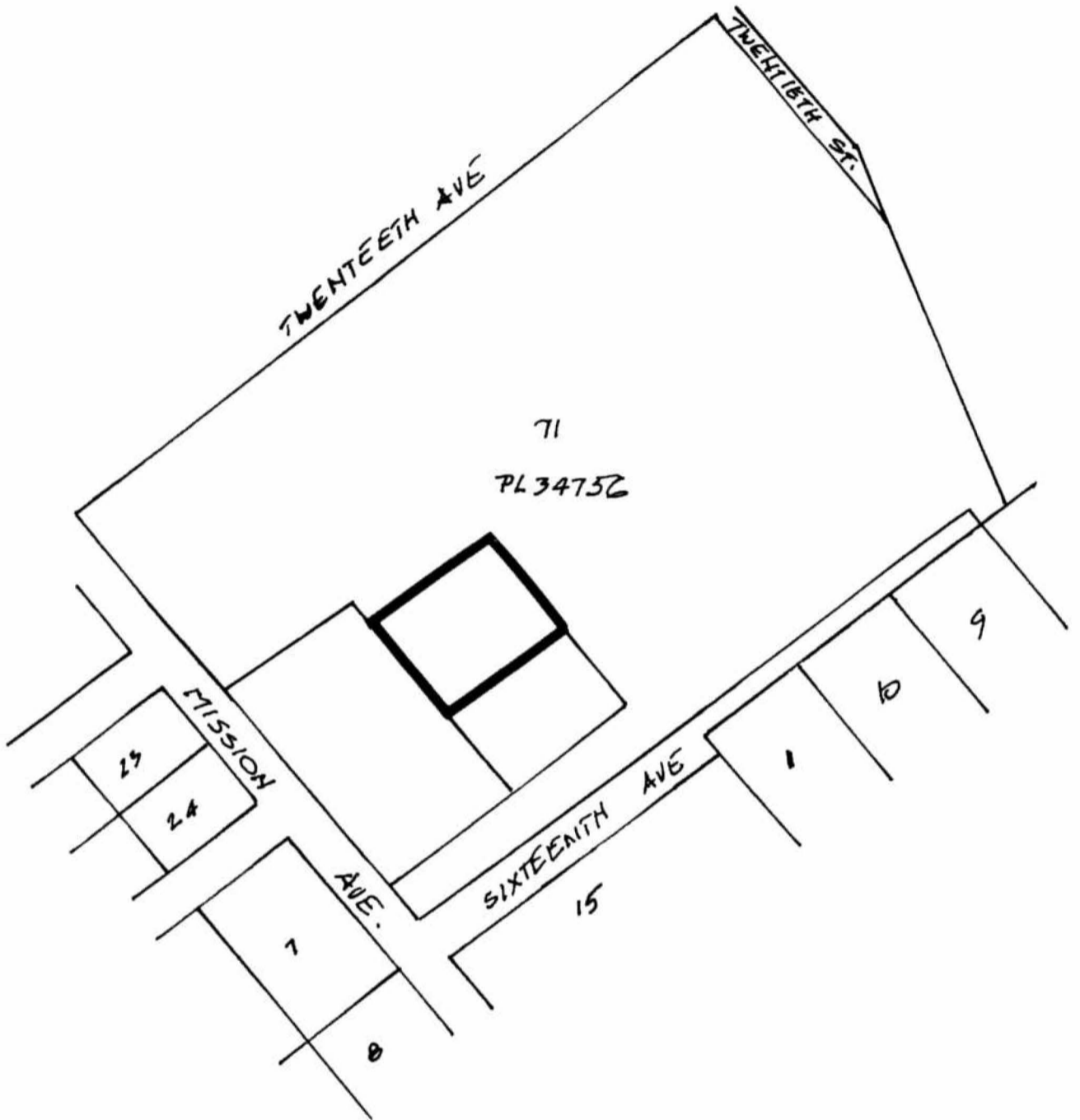

MAYOR


CLERK

BYLAW NUMBER 9014 BEING A BYLAW TO AMEND
BYLAW NUMBER 4742 BEING THE BURNABY ZONING BYLAW 1965

PROPERTY REZONED TO: AMENDED CD COMPREHENSIVE DEVELOPMENT
PTN. OF LOT 71, D.L. 171, PLAN 34756

MAP "B"



THE AREA(S) SHOWN ABOVE
OUTLINED IN BLACK (—)
IS (ARE) REZONED:

FROM: CD COMPREHENSIVE DEVELOPMENT

TO: AMENDED CD COMPREHENSIVE DEVELOPMENT

(based on RM3 Multiple Family Residential District guidelines)



PLANNING DEPARTMENT		THE CORPORATION OF THE DISTRICT OF BURNABY	
SCALE	1:2000	OFFICIAL ZONING MAP	
DRAWN			
DATE	1988 JUNE		
		No. RZ 1640	