

THE CORPORATION OF THE DISTRICT OF BURNABY

BYLAW NO. 8902

A BYLAW to amend Bylaw No. 4742, being  
Burnaby Zoning Bylaw 1965

WHEREAS application for rezoning has been made to the Council.

AND WHEREAS the Council has held a public hearing thereon after duly giving notice of the hearing as prescribed by sections 956 and 957 of the Municipal Act R.S.B.C. 1979.


NOW THEREFORE the Council of The Corporation of the District of Burnaby ENACTS as follows:


1. This Bylaw may be cited as BURNABY ZONING BYLAW 1965, AMENDMENT BYLAW NO. 136, 1987.
2. The map (hereinafter called "Map 'A'") attached to and forming an integral part of Bylaw No. 4742, being Burnaby Zoning Bylaw 1965, and designated as the Official Zoning Map of The Corporation of the District of Burnaby, is hereby amended according to the Map (hereinafter called "Map 'B'"), marginally numbered R.Z. 1592 annexed to this Bylaw, and in accordance with the explanatory legend, notations, references and boundaries designated, described, delimited and specified in particularity shown upon said Map 'B', and the various boundaries and districts shown upon said Map 'B', respectively are an amendment of and in substitution for the respective districts, designated and marked on said Map 'A' insofar as the same are changed, modified or varied thereby, and the said Map 'A' shall be deemed to be and is hereby declared to be amended accordingly and the said Map 'B' is hereby declared to be and shall form an integral part of said Map 'A' as if originally incorporated therein and shall be interpreted accordingly.

TABLED 1987 NOVEMBER 23

DEFEATED 1988 MAY 09

Read a first time this	13th day of	June	1988
Read a second time this	6th day of	SEPT.	1988
Read a third time this	17th day of	OCT.	1988
Reconsidered and adopted this	1st day of	NOVEMBER	1988

  
MAYOR

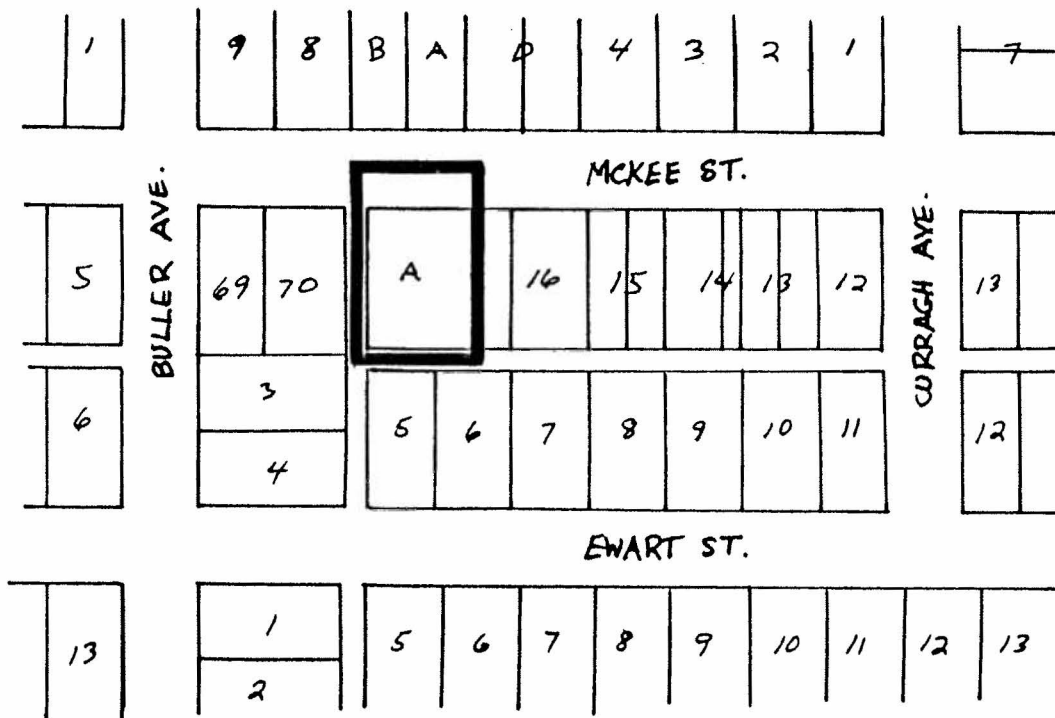
  
CLERK

BYLAW NUMBER 8902 BEING A BYLAW TO AMEND  
 BYLAW NUMBER 4742 BEING THE BURNABY ZONING BYLAW 1965

PROPERTY REZONED TO: R9 RESIDENTIAL DISTRICT

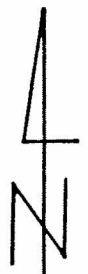
MAP B

PCL. "A" (EP 23266) of LOT 18 and of the W<sub>2</sub> OF LOT 17, BLOCK 20, D.L. 159, GROUP 1, NWD, PLAN 1813



THE AREA(S) SHOWN ABOVE  
 OUTLINED IN BLACK (—)  
 IS (ARE) REZONED:

FROM: R4 RESIDENTIAL DISTRICT  
 TO: R9 RESIDENTIAL DISTRICT



PLANNING DEPARTMENT		THE CORPORATION OF THE DISTRICT OF BURNABY	
SCALE	1:2000	<h1>OFFICIAL ZONING MAP</h1> <p>No. RZ 1592</p>	
DRAWN	L.P.		
DATE	1987 NOV.		