

THE CORPORATION OF THE DISTRICT OF BURNABY

BYLAW NO. 8895

A BYLAW to amend Bylaw No. 4742, being  
Burnaby Zoning Bylaw 1965

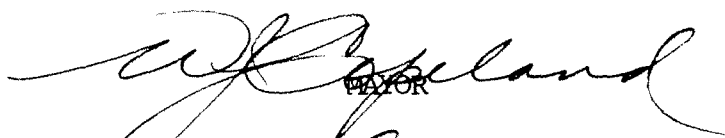

WHEREAS application for rezoning has been made to the Council.

AND WHEREAS the Council has held a public hearing thereon after duly giving notice of the hearing as prescribed by sections 956 and 957 of the Municipal Act R.S.B.C. 1979.

NOW THEREFORE the Council of The Corporation of the District of Burnaby ENACTS as follows:

1. This Bylaw may be cited as BURNABY ZONING BYLAW 1965, AMENDMENT BYLAW NO. 129, 1987.
2. The map (hereinafter called "Map 'A'") attached to and forming an integral part of Bylaw No. 4742, being Burnaby Zoning Bylaw 1965, and designated as the Official Zoning Map of The Corporation of the District of Burnaby, is hereby amended according to the Map (hereinafter called "Map 'B'"), marginally numbered R.Z. 1585 annexed to this Bylaw, and in accordance with the explanatory legend, notations, references and boundaries designated, described, delimited and specified in particularity shown upon said Map 'B', and the various boundaries and districts shown upon said Map 'B', respectively are an amendment of and in substitution for the respective districts, designated and marked on said Map 'A' insofar as the same are changed, modified or varied thereby, and the said Map 'A' shall be deemed to be and is hereby declared to be amended accordingly and the said Map 'B' is hereby declared to be and shall form an integral part of said Map 'A' as if originally incorporated therein and shall be interpreted accordingly.

Read a first time this 9<sup>th</sup> day of MAY 1988  
Read a second time this 27<sup>th</sup> day of JUNE 1988  
Read a third time this 14<sup>th</sup> day of NOVEMBER 1988  
Reconsidered and adopted this 21<sup>st</sup> day of AUGUST 1989

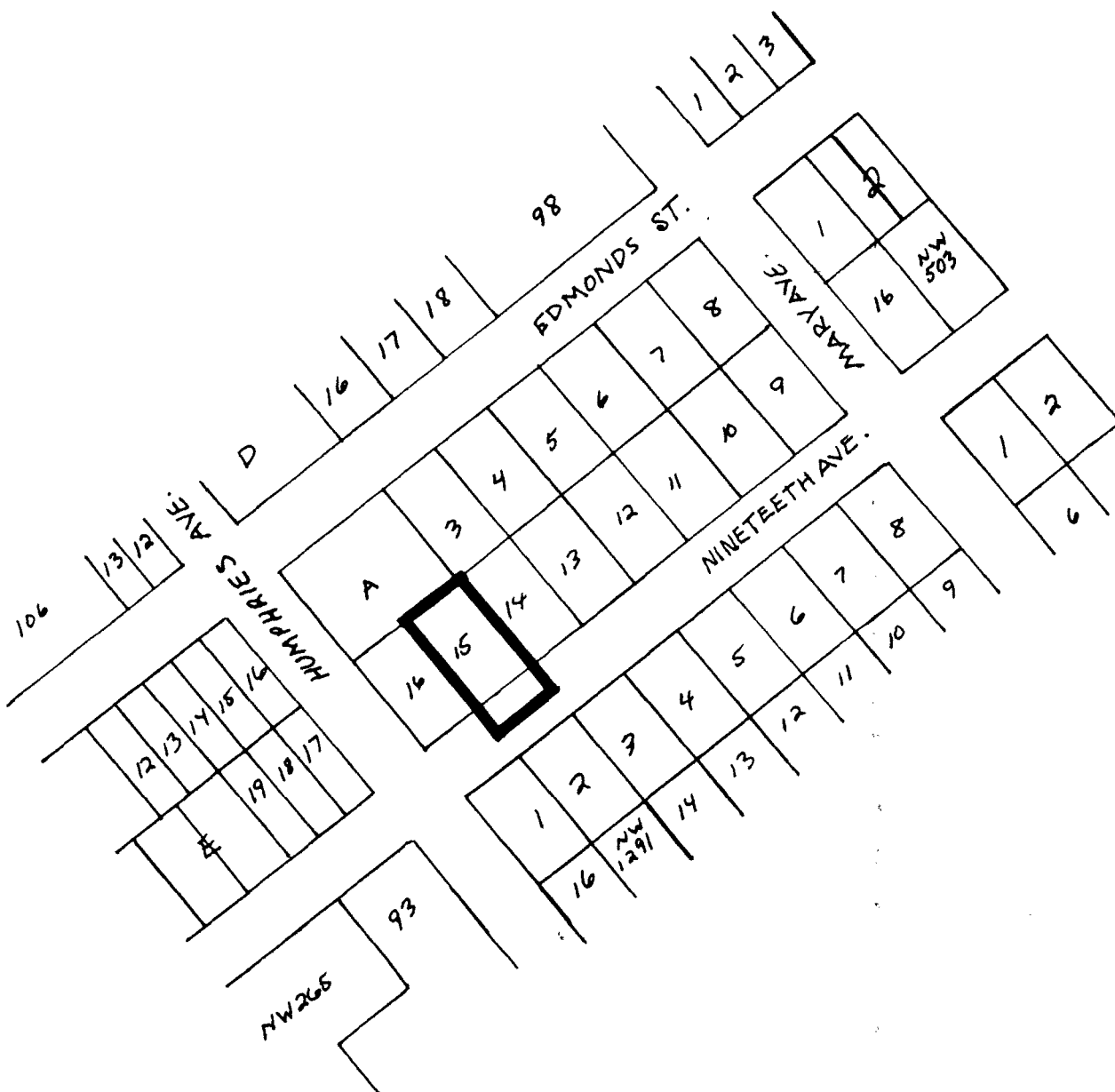
  
MAYOR  
  
CLERK

BYLAW NUMBER 8895, BEING A BYLAW TO AMEND  
BYLAW NUMBER 4742 BEING THE BURNABY ZONING BYLAW 1965

PROPERTY REZONED TO: R9 RESIDENTIAL DISTRICT

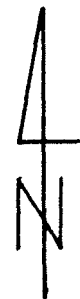
MAP B

LOT 15, BLOCK 35, D.L. 30, GROUP 1, NWD, PLAN 3036



THE AREA(S) SHOWN ABOVE  
OUTLINED IN BLACK (—)  
IS (ARE) REZONED:

FROM: R5 RESIDENTIAL DISTRICT  
TO: R9 RESIDENTIAL DISTRICT



PLANNING DEPARTMENT		THE CORPORATION OF THE DISTRICT OF BURNABY	
SCALE	1:2000	OFFICIAL ZONING MAP	
DRAWN	L.D.		
DATE	1987 NOV.		
		No. RZ	1585