

THE CORPORATION OF THE DISTRICT OF BURNABY

BYLAW NO. 8882

A BYLAW to amend Bylaw No. 4742, being
Burnaby Zoning Bylaw 1965


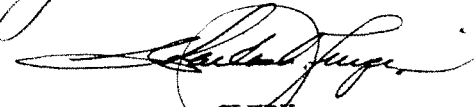
WHEREAS application for rezoning has been made to the Council.

AND WHEREAS the Council has held a public hearing thereon after duly giving notice of the hearing as prescribed by sections 956 and 957 of the Municipal Act R.S.B.C. 1979.

NOW THEREFORE the Council of The Corporation of the District of Burnaby ENACTS as follows:

1. This Bylaw may be cited as BURNABY ZONING BYLAW 1965, AMENDMENT BYLAW NO. 122, 1987.
2. The map (hereinafter called "Map 'A'") attached to and forming an integral part of Bylaw No. 4742, being Burnaby Zoning Bylaw 1965, and designated as the Official Zoning Map of The Corporation of the District of Burnaby, is hereby amended according to the Map (hereinafter called "Map 'B'"), marginally numbered R.Z. 1578 annexed to this Bylaw, and in accordance with the explanatory legend, notations, references and boundaries designated, described, delimited and specified in particularity shown upon said Map 'B', and the various boundaries and districts shown upon said Map 'B', respectively are an amendment of and in substitution for the respective districts, designated and marked on said Map 'A' insofar as the same are changed, modified or varied thereby, and the said Map 'A' shall be deemed to be and is hereby declared to be amended accordingly and the said Map 'B' is hereby declared to be and shall form an integral part of said Map 'A' as if originally incorporated therein and shall be interpreted accordingly.

Read a first time this 2nd day of NOVEMBER 1987
Read a second time this 30th day of NOVEMBER 1987
Read a third time this 2nd day of MAY 1988
Reconsidered and adopted this 3rd day of JANUARY 1989

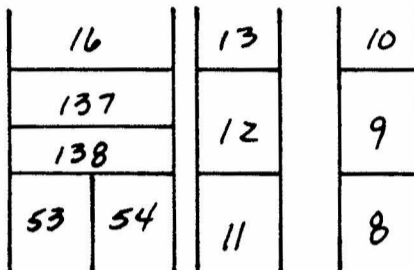
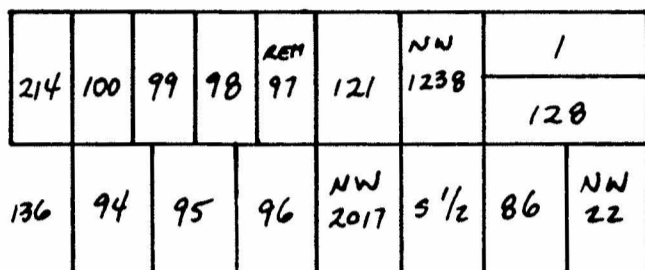

MAYOR

CLERK

BYLAW NUMBER 8882 BEING A BYLAW TO AMEND
 BYLAW NUMBER 4742 BEING THE BURNABY ZONING BYLAW 1965

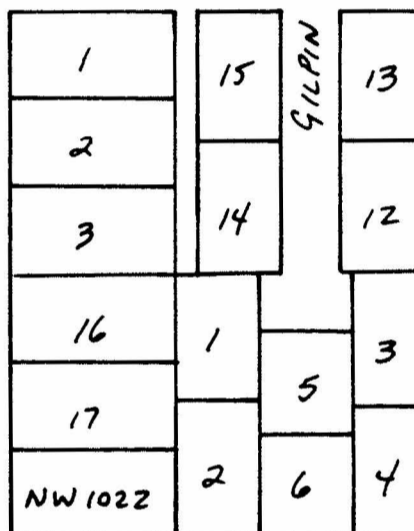
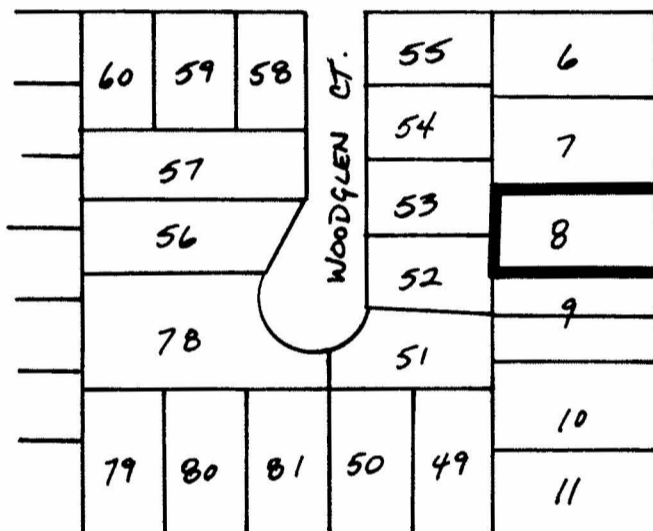
PROPERTY REZONED TO: R9a RESIDENTIAL DISTRICT

MAP B

Lot 8, Block 18, D.L. 34, Plan 1355

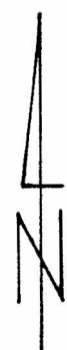
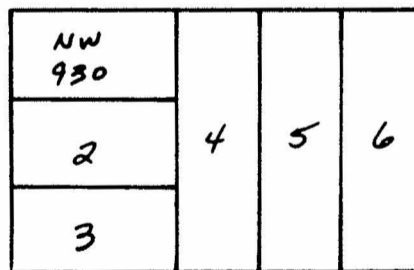
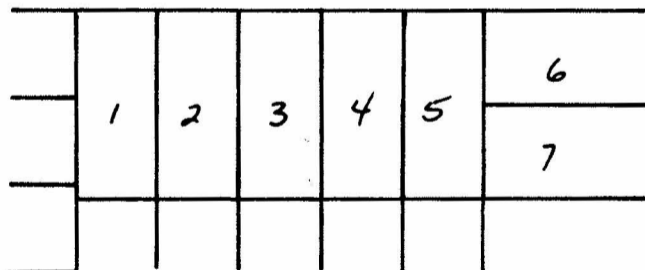


GILPIN ST.



INMAN AVE.

PRICE ST.



THE AREA(S) SHOWN ABOVE
 OUTLINED IN BLACK (—)
 IS (ARE) REZONED:

FROM: R5 RESIDENTIAL DISTRICT
 TO: R9a RESIDENTIAL DISTRICT