

THE CORPORATION OF THE DISTRICT OF BURNABY

BYLAW NO. 8811

A BYLAW to amend Bylaw No. 4742, being
Burnaby Zoning Bylaw 1965

WHEREAS application for rezoning has been made to the
Council.

AND WHEREAS the Council has held a public hearing thereon
after duly giving notice of the time and place of such hearing as
prescribed by Sections 956 and 957 of the Municipal Act, R.S.B.C.
1979.



NOW THEREFORE the Council of The Corporation of the
District of Burnaby ENACTS as follows:

1. This Bylaw may be cited as "BURNABY ZONING BYLAW 1965,
AMENDMENT BYLAW NO. 69, 1987".

2. The Map (hereinafter called "Map 'A'"), attached to and
forming an integral part of Bylaw No. 4742, being "Burnaby Zoning
Bylaw 1965", and designated as the Official Zoning Map of The
Corporation of the District of Burnaby, is hereby amended
according to the Map (hereinafter called "Map 'B'"), marginally
numbered R.Z. 1526, annexed to this Bylaw, and in accordance with
the explanatory legend, notations, references and boundaries
designated, described, delimited and specified in particularity
shown upon said Map 'B'; and the various boundaries and
districts shown upon said Map 'B' respectively are an amendment
of and in substitution for the respective districts, designated
and marked on said Map 'A' insofar as the same are changed,
modified or varied thereby, and the said Map 'A' shall be deemed
to be and is hereby declared to be amended accordingly and the
said Map 'B' is hereby declared to be and shall form an integral
part of said Map 'A', as if originally incorporated therein and
shall be interpreted accordingly.

3. The Comprehensive Development Plan entitled TOWNHOUSE DEVELOPMENT/GRANGE AND CHAFFEY prepared by HOWARD YANO ARCHITECTS and on file in the office of the Director Planning and Building Inspection, is deemed to be attached to and form part of this bylaw and any development on the lands rezoned by this bylaw shall be in conformity with the said Comprehensive Development Plan.

Read a first time this	24th	day of	AUGUST	1987
Read a second time this	21st	day of	SEPTEMBER	1987
Read a third time this	7th	day of	MARCH	1988
Reconsidered and adopted this	28th	day of	MARCH	1988

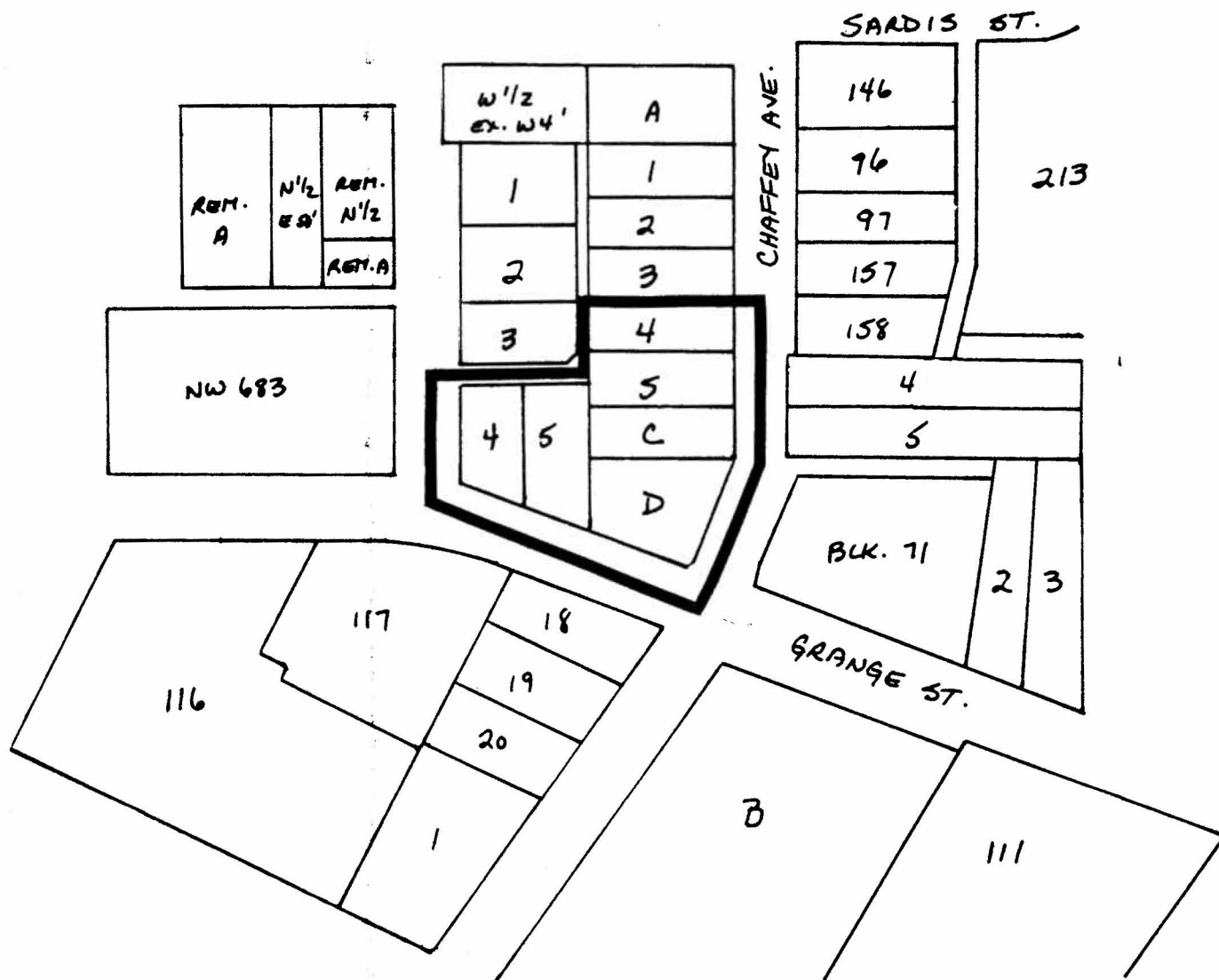

MAYOR

CLERK

BYLAW NUMBER 8811 BEING A BYLAW TO AMEND BYLAW NUMBER 4742 BEING THE BURNABY ZONING BYLAW 1965

PROPERTY REZONED TO: CD COMPREHENSIVE DEVELOPMENT DISTRICT

MAP B

Lots 4 & 5, D.L. 33, Plan 13171; Lot 4, D.L. 33, Plan 4045;
Lots "B", "C" & "D", D.L. 33, Block 79, Plan 3875, Group 1, NWD



THE AREA(S) SHOWN ABOVE
OUTLINED IN BLACK (—)
IS (ARE) REZONED:

FROM: R5 RESIDENTIAL DISTRICT
TO: CD COMPREHENSIVE DEVELOPMENT DISTRICT

PLANNING DEPARTMENT	
SCALE	1:2000
DRAWN	J.S.
DATE	1987 Aug.

THE CORPORATION OF THE DISTRICT OF BURNABY

OFFICIAL ZONING MAP

No. RZ 1526