

THE CORPORATION OF THE DISTRICT OF BURNABY

BYLAW NO. 8678

A BYLAW to stop up and close to traffic  
portion of road

WHEREAS that portion of road shown on the plan annexed  
hereto dedicated by 4953 is no longer required for road purposes.

NOW THEREFORE the Council of The Corporation of the  
District of Burnaby ENACTS as follows:

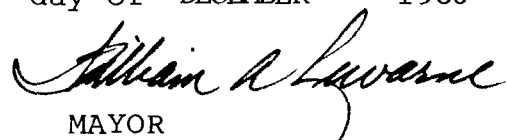
1. This Bylaw may be cited as BURNABY ROAD CLOSING BYLAW  
NO. 3, 1986.
2. That portion of road situate, lying and being in the  
Municipality of Burnaby, in the Province of British Columbia, and  
being more particularly known and described as that portion of  
road in Block 47, District Lot 218, Group 1, New Westminster  
District, dedicated by the deposit of Plan 4953 containing by  
admeasurement 56.2 m<sup>2</sup> shown outlined on the plan prepared by E.J.  
Wong, B.C.L.S., certified correct the 3rd day of October 1985, a  
copy of which is annexed hereto, is hereby stopped up and closed  
to traffic.
3. The Municipal Clerk is hereby authorized and empowered  
to petition the Minister of Municipal Affairs to abandon the said  
portion of road more particularly described in section 2 hereof  
and vest title thereto in the name of The Corporation of the  
District of Burnaby.

Read a first time this 8th day of DECEMBER 1986

Read a second time this 8th day of DECEMBER 1986

Read a third time this 8th day of DECEMBER 1986

Reconsidered and adopted this 15th day of DECEMBER 1986

  
MAYOR

DEPUTY  
CLERK



EXPLANATORY PLAN TO ACCOMPANY THE  
CORPORATION OF THE DISTRICT OF BURNABY  
LANE CLOSING BYLAW NO. \_\_\_\_\_ FOR  
PORTION OF LANE IN BLOCK 47  
DISTRICT LOT 218 GROUP ONE  
NEW WESTMINSTER DISTRICT PLAN 4953

PLAN \_\_\_\_\_

Deposited in the Land Title  
Office at New Westminster, B.C.,  
this \_\_\_ day of \_\_\_\_\_, 198\_\_

SCALE = 1 : 250

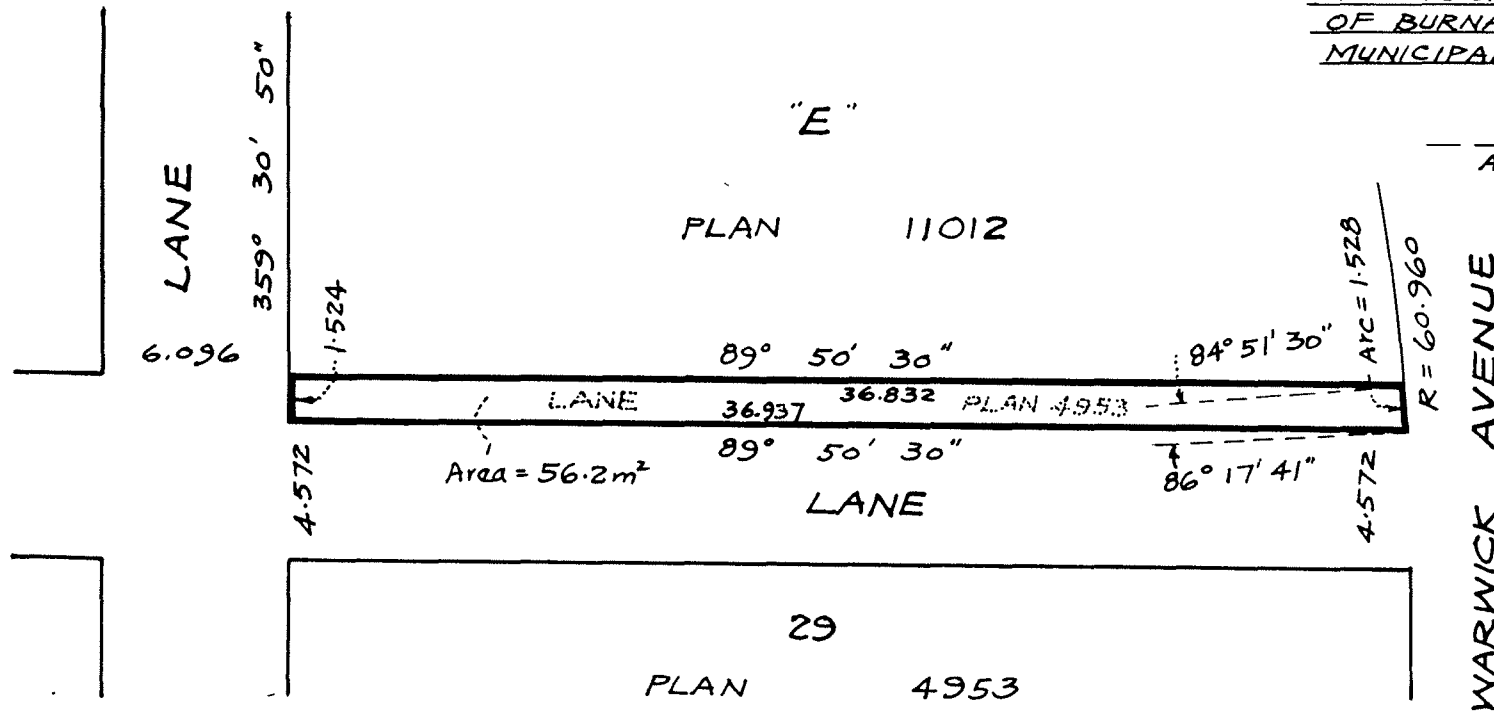


All distances are in metres unless otherwise indicated.

Deputy Registrar

THE CORPORATION OF THE DISTRICT  
OF BURNABY  
MUNICIPAL CLERK

Authorized Signatory



CERTIFIED CORRECT ACCORDING  
TO LAND TITLE OFFICE RECORDS:

Note: Bearings are astronomic and derived  
from meridian of Plan 4953  
m<sup>2</sup> denotes square metres

E. J. Wong  
B.C.L.S.

OCTOBER 3, 1988

"This plan lies within the Greater Vancouver Regional District."

Ken K. Wong & Associates  
Canada & B.C. Land Surveyors  
5624 E. Hastings Street  
Burnaby, B.C. V5B 1R4