

THE CORPORATION OF THE DISTRICT OF BURNABY

BYLAW NO. 8651

A BYLAW to amend Bylaw No. 4742, being
Burnaby Zoning Bylaw 1965

WHEREAS application for rezoning has been made to the Council.

AND WHEREAS the Council has held a public hearing thereon after duly giving notice of the hearing as prescribed by section 720 of the Municipal Act R.S.B.C. 1979.

NOW THEREFORE the Council of The Corporation of the District of Burnaby ENACTS as follows:

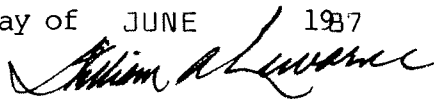
1. This Bylaw may be cited as BURNABY ZONING BYLAW 1965, AMENDMENT BYLAW NO. 106, 1986.
2. The map (hereinafter called "Map 'A'") attached to and forming an integral part of Bylaw No. 4742, being Burnaby Zoning Bylaw 1965, and designated as the Official Zoning Map of The Corporation of the District of Burnaby, is hereby amended according to the Map (hereinafter called "Map 'B'"), marginally numbered R.Z. 1451, annexed to this Bylaw, and in accordance with the explanatory legend, notations, references and boundaries designated, described, delimited and specified in particularity shown upon said Map 'B', and the various boundaries and districts shown upon said Map 'B', respectively are an amendment of and in substitution for the respective districts, designated and marked on said Map 'A' insofar as the same are changed, modified or varied thereby, and the said Map 'A' shall be deemed to be and is hereby declared to be amended accordingly and the said Map 'B' is hereby declared to be and shall form an integral part of said Map 'A' as if originally incorporated therein and shall be interpreted accordingly.

Read a first time this 29th day of SEPT. 1986

Read a second time this 27th day of OCT. 1986

Read a third time this 6th day of APRIL 1987

Reconsidered and adopted this 29th day of JUNE 1987



MAYOR

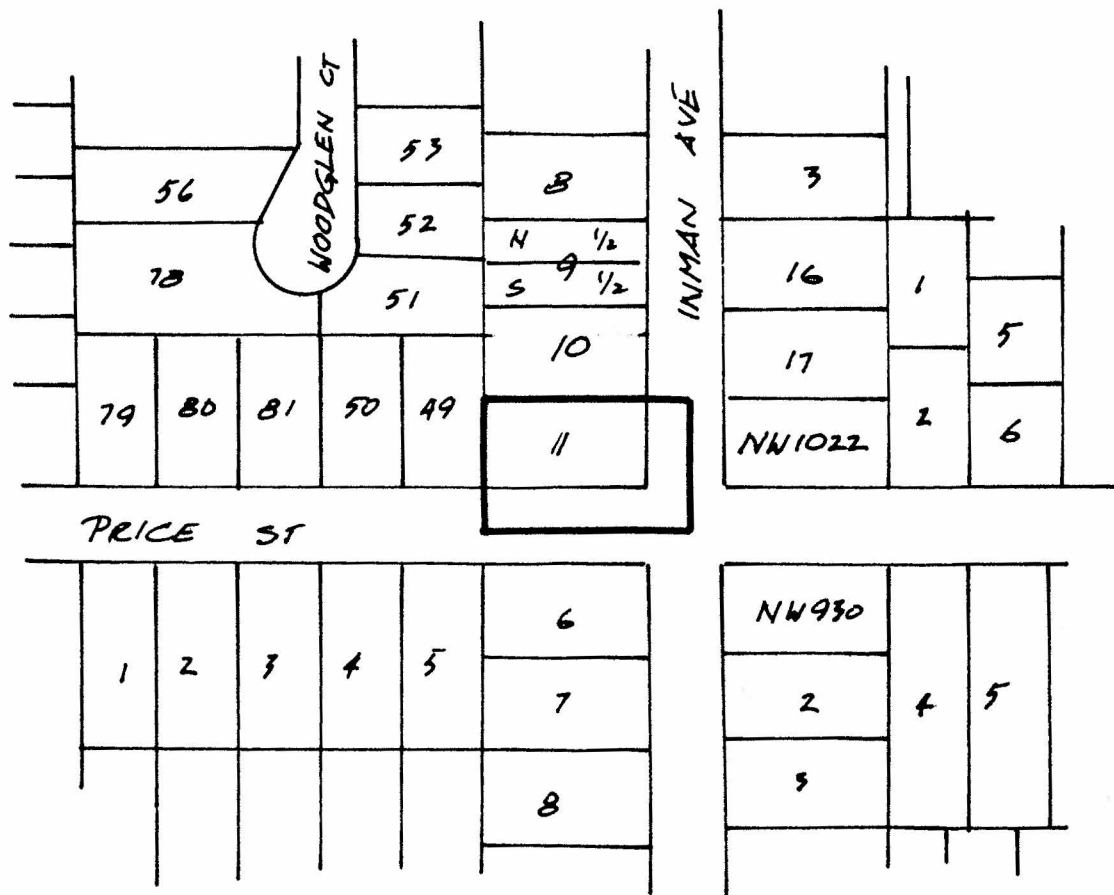

CLERK

BYLAW NUMBER 8651 BEING A BYLAW TO AMEND
BYLAW NUMBER 4742 BEING THE BURNABY ZONING BYLAW 1965

PROPERTY REZONED TO: R9 RESIDENTIAL DISTRICT

Lot 11, Blocks 17 & 18, D.L. 34, Grp. 1, NWD, Plan 1355

MAP B



THE AREA(S) SHOWN ABOVE
OUTLINED IN BLACK (—)
IS (ARE) REZONED:

FROM: R5 RESIDENTIAL DISTRICT
TO: R9 RESIDENTIAL DISTRICT



PLANNING DEPARTMENT	
SCALE	1:2000
DRAWN	E. P.
DATE	1986 SEPT

THE CORPORATION OF THE DISTRICT OF BURNABY

OFFICIAL ZONING MAP

No. RZ 1451