

THE CORPORATION OF THE DISTRICT OF BURNABY

BYLAW NO. 8527

A BYLAW to stop up and close to traffic
portions of road

WHEREAS those portions of road shown on the plan annexed hereto dedicated by Plans 3035 are no longer required for road purposes.

NOW THEREFORE the Council of The Corporation of the District of Burnaby ENACTS as follows:

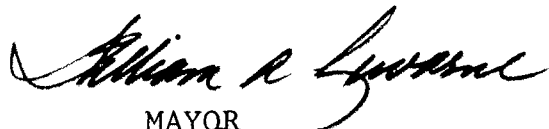
1. This Bylaw may be cited as BURNABY ROAD CLOSING BYLAW NO. 1, 1986.
2. Those portions of road situate, lying and being in the Municipality of Burnaby, in the Province of British Columbia, and being more particularly known and described as those portions of road in District Lot 29, Group 1, New Westminster District, dedicated by the deposit of Plans 3035 containing by admeasurement 251.6 m² as shown outlined on the plan prepared by Ian C. MacDonald, B.C.L.S., certified correct the 16th day of January, 1986, a copy of which is annexed hereto, are hereby stopped up and closed to traffic.
3. The Municipal Clerk is hereby authorized and empowered to petition the Minister of Municipal Affairs to abandon the said portions of road more particularly described in section 2 hereof and vest title thereto in the name of The Corporation of the District of Burnaby.

Read a first time this 24th day of MARCH 1986

Read a second time this 24th day of MARCH 1986

Read a third time this 24th day of MARCH 1986

Reconsidered and adopted this 1st day of APRIL 1986


MAYOR

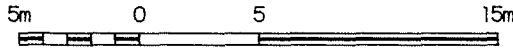

CLERK

EXPLANATORY PLAN TO ACCOMPANY
 THE CORPORATION OF THE DISTRICT OF
 BURNABY ROAD CLOSING BY-LAW _____
 FOR A PORTION OF ROAD IN D.L. 29,
 GP. 1, DEDICATED BY PLAN 3035,
 N.W.D., PURSUANT TO SECTION 120,
 L.T.A.

PLAN

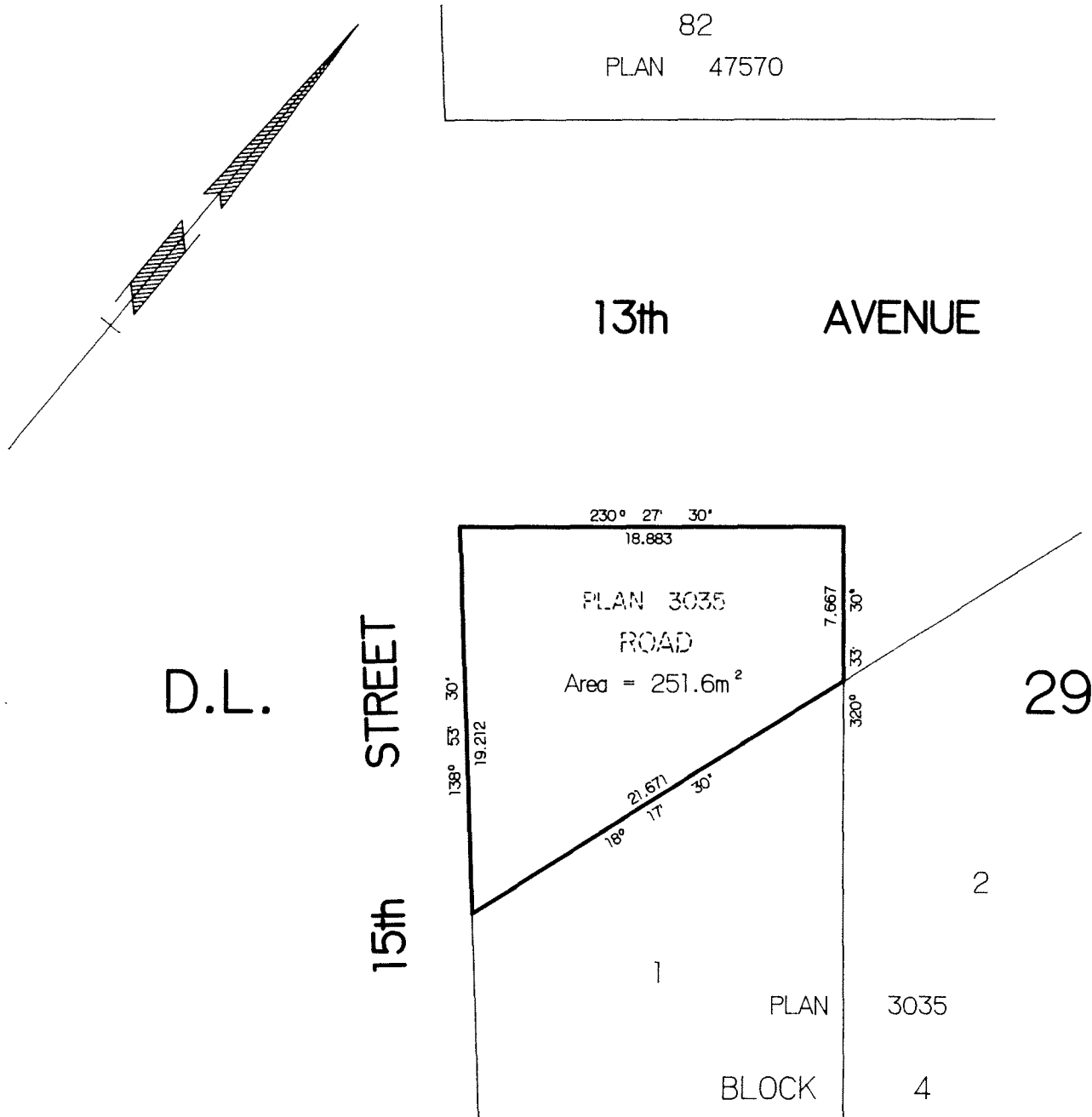
Deposited in the Land Title Office
 in New Westminster, B.C., this
 day of _____, 1986.

Scale : 1-250



All distances are in metres.

Registrar



The Corporation of the District
 of Burnaby

Charles J. ...
 Municipal Clerk

William R. ...
 Mayor

Certified correct according to Land
 Title Office records this 16th
 day of January, 1986.

Jan C. MacDonald
 B.C. Land Surveyor

The Corporation of the District of Burnaby,
 Engineering Department,
 4949 Canada Way, Burnaby, B.C.

"This plan lies within the Greater Vancouver Regional District."