

THE CORPORATION OF THE DISTRICT OF BURNABY

BYLAW NO. 8437

A BYLAW to amend Bylaw No. 4742, being  
Burnaby Zoning Bylaw 1965

WHEREAS application for rezoning has been made to the Council.

AND WHEREAS the Council has held a public hearing thereon after duly giving notice of the hearing as prescribed by section 720 of the Municipal Act R.S.B.C. 1979.

NOW THEREFORE the Council of The Corporation of the District of Burnaby ENACTS as follows:

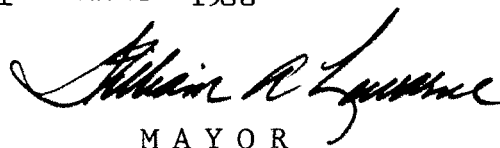
1. This Bylaw may be cited as BURNABY ZONING BYLAW 1965, AMENDMENT BYLAW NO. 63, 1985.
2. The Map (hereinafter called 'Map 'A''') attached to and forming an integral part of Bylaw No. 4742, being Burnaby Zoning Bylaw 1965, and designated as the Official Zoning Map of The Corporation of the District of Burnaby, is hereby amended according to the Map (hereinafter called 'Map 'B' '), marginally numbered R.Z. 1330 annexed to this Bylaw, and in accordance with the explanatory legend, notations, references and boundaries designated, described, delimited and specified in particularly shown upon said Map 'B'; and the various boundaries and districts shown upon said Map 'B' respectively are an amendment of and in substitution for the respective districts, designated and marked on said Map 'A' insofar as the same are changed, modified or varied thereby, and the said Map 'A' shall be deemed to be and is hereby declared to be amended accordingly and the said Map 'B' is hereby declared to be and shall form an integral part of said Map 'A', as if originally incorporated therein, and shall be interpreted accordingly.

Read a first time this 30th day of SEPT. 1985

Read a second time this 28th day of OCT. 1985

Read a third time this 20th day of JAN. 1986

Reconsidered and adopted 10th this day of MARCH 1986

  
MAYOR

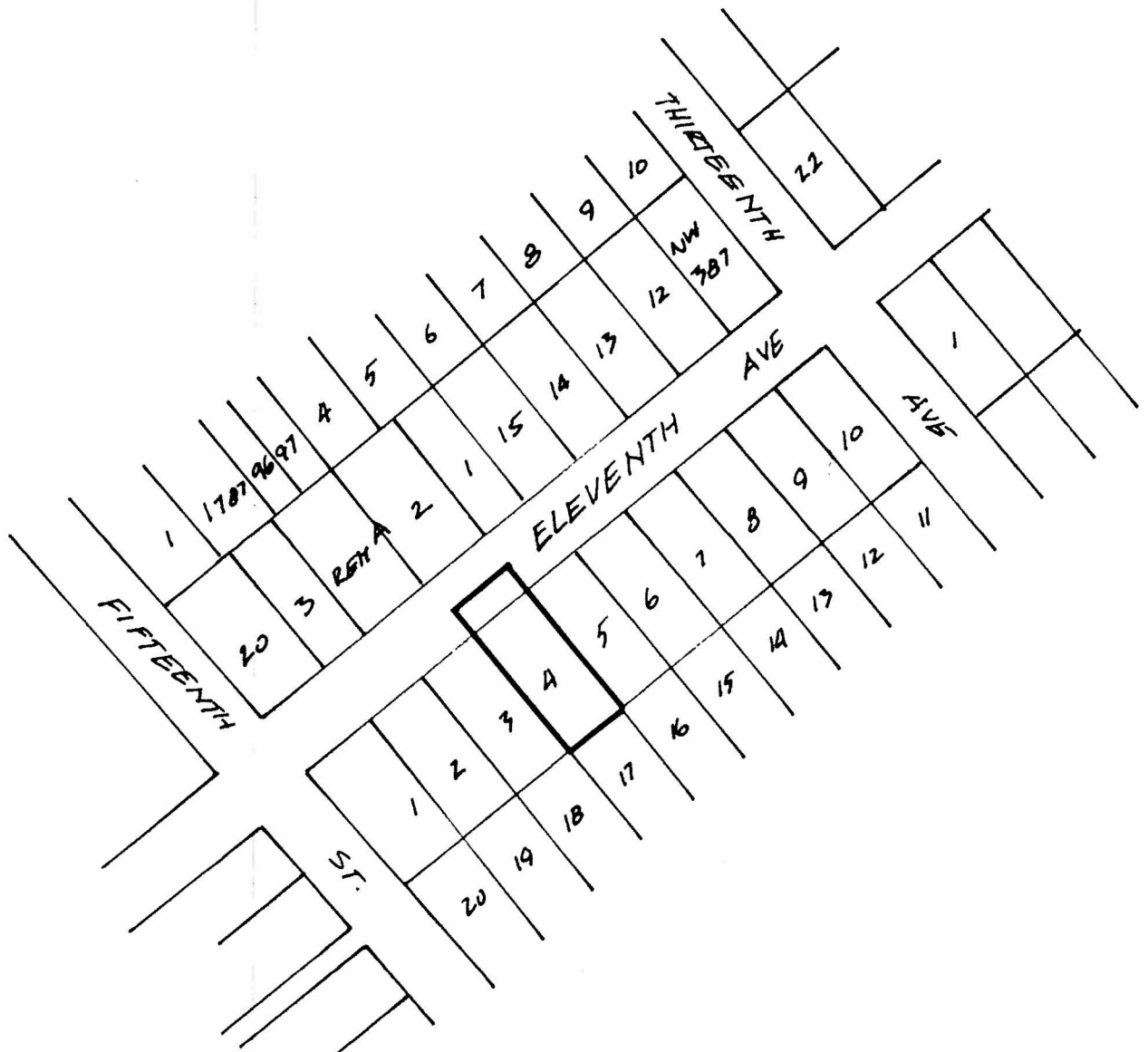
  
CLERK

BYLAW NUMBER 8437 BEING A BYLAW TO AMEND  
BYLAW NUMBER 4742 BEING THE BURNABY ZONING BYLAW 1965

PROPERTY REZONED TO: R9 RESIDENTIAL DISTRICT

LOT 4, BLOCK 8, DISTRICT LOT 29, GROUP 1, PLAN 3035 NWD

MAP "B"



THE AREA(S) SHOWN ABOVE  
OUTLINED IN BLACK (—)  
IS (ARE) REZONED:

FROM: R5 RESIDENTIAL DISTRICT  
TO: R9 RESIDENTIAL DISTRICT



PLANNING DEPARTMENT		THE CORPORATION OF THE DISTRICT OF BURNABY	
SCALE	1 : 2000	OFFICIAL ZONING MAP	
DRAWN	E. P.		
DATE	1985 OCT.		
		No. RZ	1330