

THE CORPORATION OF THE DISTRICT OF BURNABY

BYLAW NO. 8412

A BYLAW to amend Bylaw No. 4742, being
Burnaby Zoning Bylaw 1965

WHEREAS application for rezoning has been made to the Council.

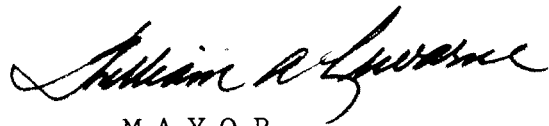
AND WHEREAS the Council has held a public hearing thereon after duly giving notice of the hearing as prescribed by section 720 of the Municipal Act R.S.B.C. 1979.

NOW THEREFORE the Council of The Corporation of the District of Burnaby ENACTS as follows:

1. This Bylaw may be cited as BURNABY ZONING BYLAW 1965, AMENDMENT BYLAW NO. 52, 1985.

2. The Map (hereinafter called "Map 'A'") attached to and forming an integral part of Bylaw No. 4742, being Burnaby Zoning Bylaw 1965, and designated as the Official Zoning Map of The Corporation of the District of Burnaby, is hereby amended according to the Map (hereinafter called "Map 'B' "), marginally numbered R.Z. 1319 annexed to this Bylaw, and in accordance with the explanatory legend, notations, references and boundaries designated, described, delimited and specified in particularly shown upon said Map 'B'; and the various boundaries and districts shown upon said Map 'B' respectively are an amendment of and in substitution for the respective districts, designated and marked on said Map 'A' insofar as the same are changed, modified or varied thereby, and the said Map 'A' shall be deemed to be and is hereby declared to be amended accordingly and the said Map 'B' is hereby declared to be and shall form an integral part of said Map 'A', as if originally incorporated therein, and shall be interpreted accordingly.

Read a first time this 29th day of JULY 1985
Read a second time this 9th day of SEPT. 1985
Read a third time this 12th day of NOV. 1985
Reconsidered and adopted 9th this day of DEC. 1985


MAYOR

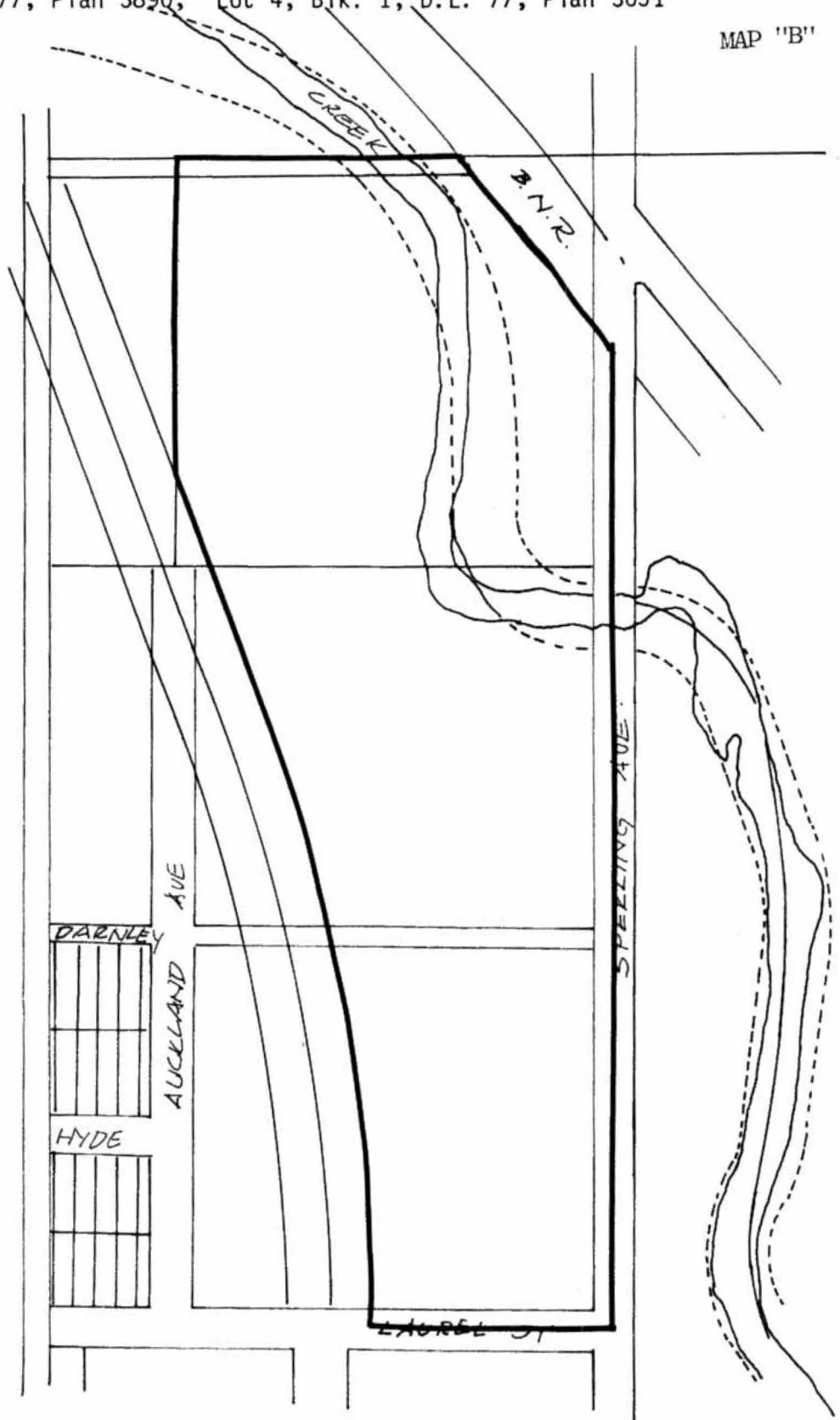

CLERK

BYLAW NUMBER 8412 BEING A BYLAW TO AMEND
BYLAW NUMBER 4742 BEING THE BURNABY ZONING BYLAW 1965

PROPERTY REZONED TO: P3 PARK & PUBLIC USE DISTRICT

Portions of Lot 5, D.L. 77, Plan 3890; Lot 4, Blk. 1, D.L. 77, Plan 3051

MAP "B"



THE AREA(S) SHOWN ABOVE
OUTLINED IN BLACK (—) IS (ARE) REZONED:

FROM: M2 GENERAL INDUSTRIAL DISTRICT
TO: P3 PARK & PUBLIC USE DISTRICT



PLANNING DEPARTMENT		THE CORPORATION OF THE DISTRICT OF BURNABY	
SCALE	N.T.S.	OFFICIAL ZONING MAP	
DRAWN	E.P.		
DATE	1985 AUG.		
		No. RZ 1319	