

THE CORPORATION OF THE DISTRICT OF BURNABY

BYLAW NO. 8343

A BYLAW to amend Bylaw No. 4742, being  
Burnaby Zoning Bylaw 1965

WHEREAS application for rezoning has been made to the Council.

AND WHEREAS the Council has held a public hearing thereon after duly giving notice of the time and place of such hearing as prescribed by section 720 of the Municipal Act, R.S.B.C. 1979.

NOW THEREFORE the Council of The Corporation of the District of Burnaby ENACTS as follows:

1. This Bylaw may be cited as "BURNABY ZONING BYLAW 1965, AMENDMENT BYLAW NO. 15, 1985."

2. The Map (hereinafter called "Map 'A'"), attached to and forming an integral part of Bylaw No. 4742, being "Burnaby Zoning Bylaw 1965", and designated as the Official Zoning Map of The Corporation of the District of Burnaby, is hereby amended according to the Map (hereinafter called "Map 'B'"), marginally numbered R.Z. 1283, annexed to this Bylaw, and in accordance with the explanatory legend, notations, references and boundaries designated, described, delimited and specified in particularity shown upon said Map 'B'; and the various boundaries and districts shown upon said Map 'B' respectively are an amendment of and in substitution for the respective districts, designated and marked on said Map 'A' insofar as the same are changed, modified or varied thereby, and the said Map 'A' shall be deemed to be and is hereby declared to be amended accordingly and the said Map 'B' is hereby declared to be and shall form an integral part of said Map 'A', as if originally incorporated therein and shall be interpreted accordingly.

3. The Comprehensive Development Plan entitled RETAIL/  
OFFICE DEVELOPMENT/KINGSWAY/NELSON, prepared by HAMILTON DOYLE &  
ASSOCIATES, and on file in the office of the Director Planning  
and Building Inspection, is deemed to be attached to and form  
part of this bylaw and any development on the lands rezoned by  
this bylaw shall be in conformity with the said Comprehensive  
Development Plan.

Read a first time this 9th day of APRIL 1985

Read a second time this 29th day of APRIL 1985

Read a third time this 6th day of MAY 1985

Reconsidered and adopted this 13th day of MAY 1985

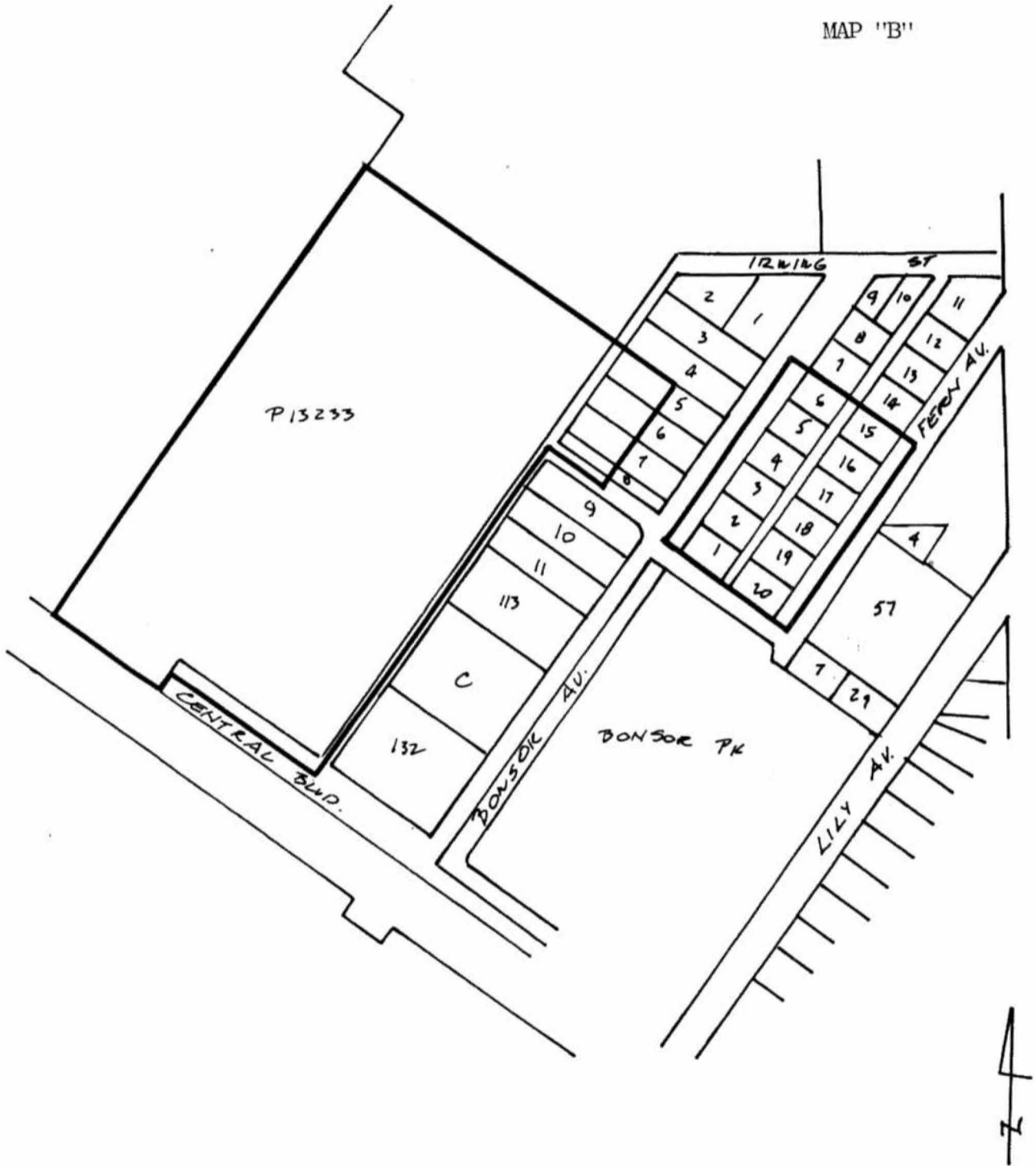
  
MAYOR

  
CLERK

BYLAW NUMBER 8343 BEING A BYLAW TO AMEND  
BYLAW NUMBER 4742 BEING THE BURNABY ZONING BYLAW 1965

PROPERTY REZONED TO: CD COMPREHENSIVE DEVELOPMENT DISTRICT

Portion of Block "G" of D.L.'s 32, 152 & 153, Plan 13233; Portion of Lots 5, 6 & 7, Block 22, D.L. 152, Plan 3741; Portion of Pcl. "B", Block 22, D.L. 152, Plan 3741 shown outlined green on plan with Bylaw filed 44384; Lots 1, 5 & 6, Block 23, D.L. 152, Plan 2322; Portion of Pcl. "K", Bylaw Plan 32181, D.L.'s 32 & 152 according to Plans 783, 2322, 3741 and 4525; Lots 2, 3 & 4, Block 23, D.L. 152, Plan 2322; Portion of Lot 1, D.L. 152, Plan 68348



THE AREA(S) SHOWN ABOVE  
OUTLINED IN BLACK (—)  
IS (ARE) REZONED:

FROM: C2 COMMUNITY COMMERCIAL DISTRICT,  
C3 GENERAL COMMERCIAL DISTRICT &  
P8 PARKING DISTRICT  
TO: CD COMPREHENSIVE DEVELOPMENT DISTRICT

PLANNING DEPARTMENT		THE CORPORATION OF THE DISTRICT OF BURNABY	
SCALE	N. T. S.	<b>OFFICIAL ZONING MAP</b> No. RZ 1283	
DRAWN	E. T.		
DATE	1985 APR.		