

THE CORPORATION OF THE DISTRICT OF BURNABY

BYLAW NO. 8083

A Bylaw to amend Bylaw No. 4742, being
Burnaby Zoning Bylaw 1965"

WHEREAS application for rezoning has been made to the Council.

AND WHEREAS the Council has held a public hearing thereon after duly giving notice of the hearing as prescribed by section 720 of the Municipal Act R.S.B.C. 1979.

NOW THEREFORE the Council of The Corporation of the District of Burnaby ENACTS as follows:

1. This Bylaw may be cited as "BURNABY ZONING BYLAW 1965, AMENDMENT BYLAW NO. 32, 1983".
2. The Map (hereinafter called "Map 'A' ") attached to and forming an integral part of Bylaw No. 4742, being "Burnaby Zoning Bylaw 1965", and designated as the Official Zoning Map of The Corporation of the District of Burnaby, is hereby amended according to the Map (hereinafter called "Map 'B' "), marginally numbered R.Z. 1145 annexed to this Bylaw, and in accordance with the explanatory legend, notations, references and boundaries designated, described, delimited and specified in particularly shown upon said Map 'B'; and the various boundaries and districts shown upon said Map 'B' respectively are an amendment of and in substitution for the respective districts, designated and marked on said Map 'A' insofar as the same are changed, modified or varied thereby, and the said Map 'A' shall be deemed to be and is hereby declared to be amended accordingly and the said Map 'B' is hereby declared to be and shall form an integral part of said Map 'A', as if originally incorporated therein, and shall be interpreted accordingly.

Read a first time this 8th day of AUG. 1983.
Read a second time this 6th day of SEPT. 1983.
Read a third time this 27th day of FEB. 1984.
Reconsidered and adopted this 26th day of MARCH 1984.


MAYOR


CLERK

RZ#24/83

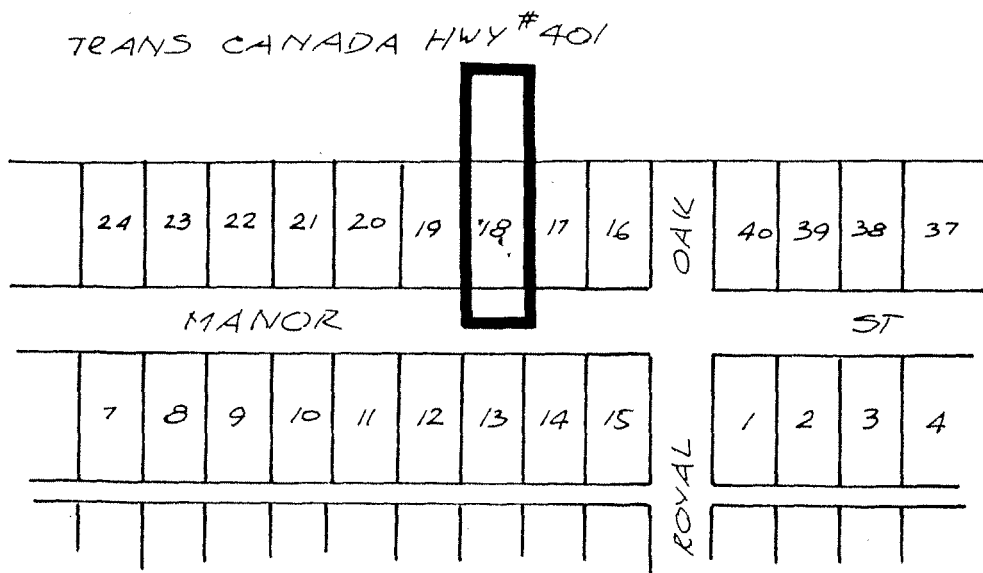
32

BYLAW NUMBER 8083 BEING A BYLAW TO AMEND
 BYLAW NUMBER 4742 BEING THE BURNABY ZONING BYLAW 1965

PROPERTY REZONED TO: R9 RESIDENTIAL DISTRICT

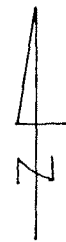
Lot 18, Blk. 18, D.L. 74, Grp. 1, Plan 2603

MAP 'B'



THE AREA(S) SHOWN ABOVE
 OUTLINED IN BLACK (—)
 IS (ARE) REZONED:

FROM: R5 RESIDENTIAL DISTRICT
 TO: R9 RESIDENTIAL DISTRICT



James Hudson

PLANNING DEPARTMENT	THE CORPORATION OF THE DISTRICT OF BURNABY
SCALE 1" : 200'	OFFICIAL ZONING MAP
DRAWN E.P.	
DATE 1983 JULY	
No. RZ 1145	