

THE CORPORATION OF THE DISTRICT OF BURNABY

BY-LAW NO. 8035

A BY-LAW to amend By-Law No. 4742, being
Burnaby Zoning By-Law 1965

WHEREAS application for rezoning has been made to
the Council.

AND WHEREAS the Council has held a public hearing
thereon after duly giving notice of the time and place of such
hearing as prescribed by section 720 of the Municipal Act, R.S.B.C.
1979.

NOW THEREFORE the Council of The Corporation of the
District of Burnaby ENACTS as follows:

1. This By-law may be cited as BURNABY ZONING BY-LAW
1965, AMENDMENT BY-LAW NO. 11 , 19 83 .
2. The Map (hereinafter called "Map 'A'"), attached to
and forming an integral part of By-Law No. 4742, being "Burnaby
Zoning By-Law 1965", and designated as the Official Zoning Map
of The Corporation of the District of Burnaby, is hereby amended
according to the Map (hereinafter called "Map 'B'"), marginally
numbered R.Z. 1125 , annexed to this By-Law, and in accord-
ance with the explanatory legend, notations, references and
boundaries designated, described, delimited and specified in
particularity shown upon said Map 'B'; and the various boundaries
and districts shown upon said Map 'B' respectively are an amend-
ment of and in substitution for the respective districts, desig-
nated and marked on said Map 'A' insofar as the same are changed,
modified or varied thereby, and the said Map 'A' shall be deemed
to be and is hereby declared to be amended accordingly and the
said Map 'B' is hereby declared to be and shall form an integral
part of said Map 'A', as if originally incorporated therein and
shall be interpreted accordingly.

3. The Comprehensive Development Plan entitled "Willingdon Green Executive Park", prepared by the architects, and on file in the office of the Director Planning & Building Inspection, is deemed to be attached to and form part of this bylaw and any development on the lands rezoned by this bylaw shall be in conformity with the said Comprehensive Development Plan.

Read a first time this 7th day of FEBRUARY 19 83
Read a second time this 28th day of FEBRUARY 19 83
Read a third time this 14th day of MARCH 19 83
Reconsidered and adopted this 28th day of MARCH 19 83



M A Y O R



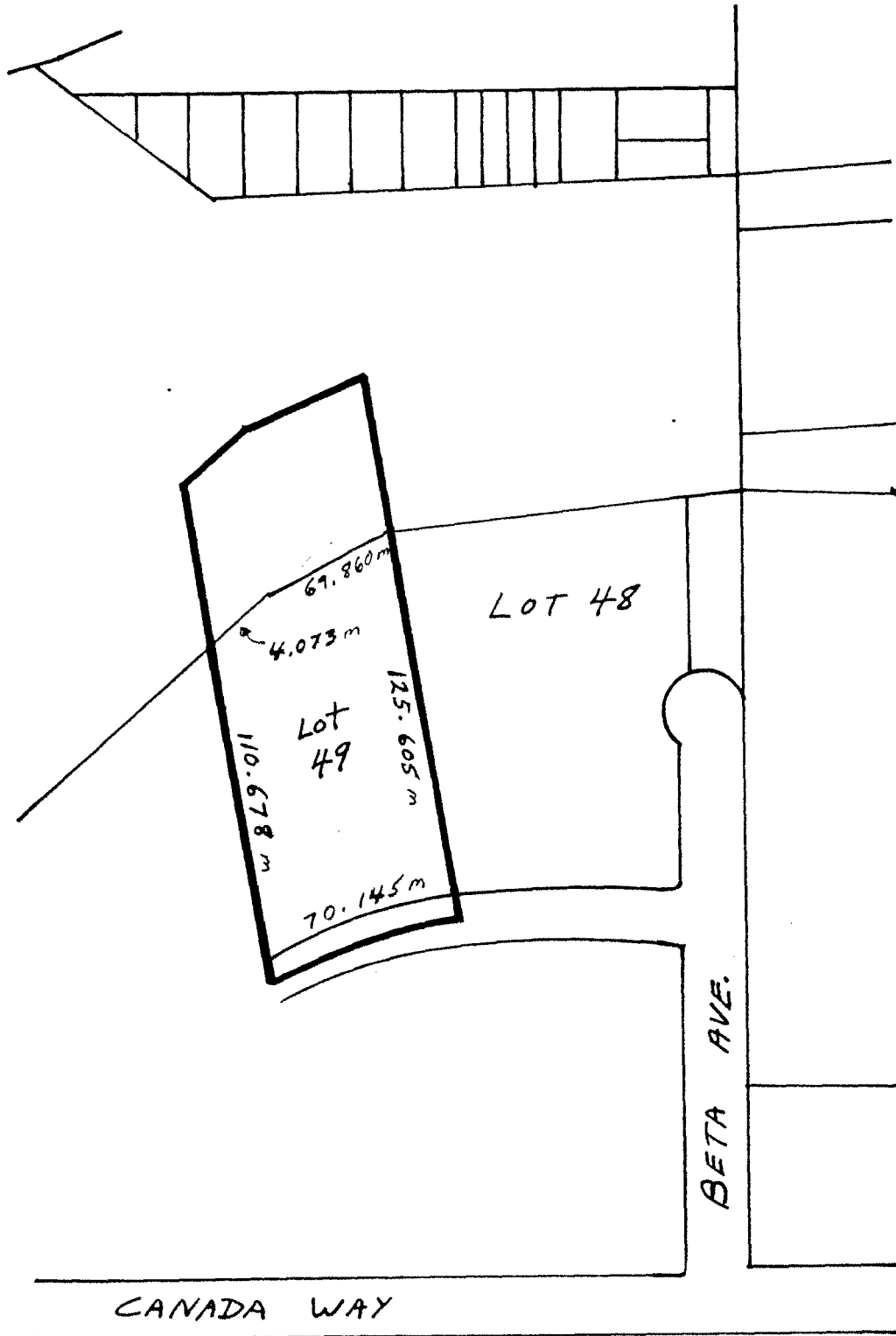
DEPUTY C L E R K

BYLAW NUMBER 8035 BEING A BYLAW TO AMEND
BYLAW NUMBER 4742 BEING THE BURNABY ZONING BYLAW 1965

PROPERTY REZONED TO: CD COMPREHENSIVE DEVELOPMENT DISTRICT

Lot 49, Group 1, D.L. 70, Plan 63230

MAP "B"



THE AREA(S) SHOWN ABOVE
OUTLINED IN BLACK (—)
IS (ARE) REZONED:

FROM: M1 MANUFACTURING DISTRICT
TO: CD COMPREHENSIVE DEVELOPMENT DISTRICT

PLANNING DEPARTMENT		THE CORPORATION OF THE DISTRICT OF BURNABY	
SCALE	1" = 200'	OFFICIAL ZONING MAP	
DRAWN	G.L.		
DATE	83 Feb 01		
		No. RZ 1125	