

THE CORPORATION OF THE DISTRICT OF BURNABY

BY-LAW NO. 8000

A BY-LAW to amend By-Law No. 4742, being
Burnaby Zoning By-Law 1965

WHEREAS application for rezoning has been made to the Council.

AND WHEREAS the Council has held a public hearing thereon after duly giving notice of the hearing as prescribed by section 720 of the Municipal Act R.S.B.C. 1979.

NOW THEREFORE the Council of The Corporation of the District of Burnaby ENACTS as follows:

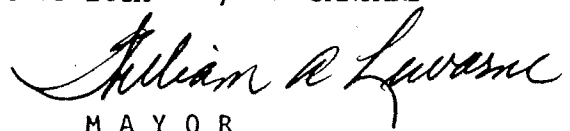
1. This By-law may be cited as BURNABY ZONING BY-LAW 1965, AMENDMENT BY-LAW NO. 68 , 1982 .
2. The Map (hereinafter called "Map 'A' ") attached to and forming an integral part of By-Law No. 4742, being "Burnaby Zoning By-Law 1965", and designated as the Official Zoning Map of The Corporation of the District of Burnaby, is hereby amended according to the Map (hereinafter called "Map 'B' "), marginally numbered R.Z. 1108 annexed to this By-law, and in accordance with the explanatory legend, notations, references and boundaries designated, described, delimited and specified in particularity shown upon said Map 'B' ; and the various boundaries and districts shown upon said Map 'B' respectively are an amendment of and in substitution for the respective districts, designated and marked on said Map 'A' insofar as the same are changed, modified or varied thereby, and the said Map 'A' shall be deemed to be and is hereby declared to be amended accordingly and the said Map 'B' is hereby declared to be and shall form an integral part of said Map 'A', as if originally incorporated therein, and shall be interpreted accordingly.

Read a first time this 29th day of NOVEMBER 1982

Read a second time this 4th day of JANUARY 1983

Read a third time this 17th day of JANUARY 1983

Reconsidered and adopted this 24th day of JANUARY 1983

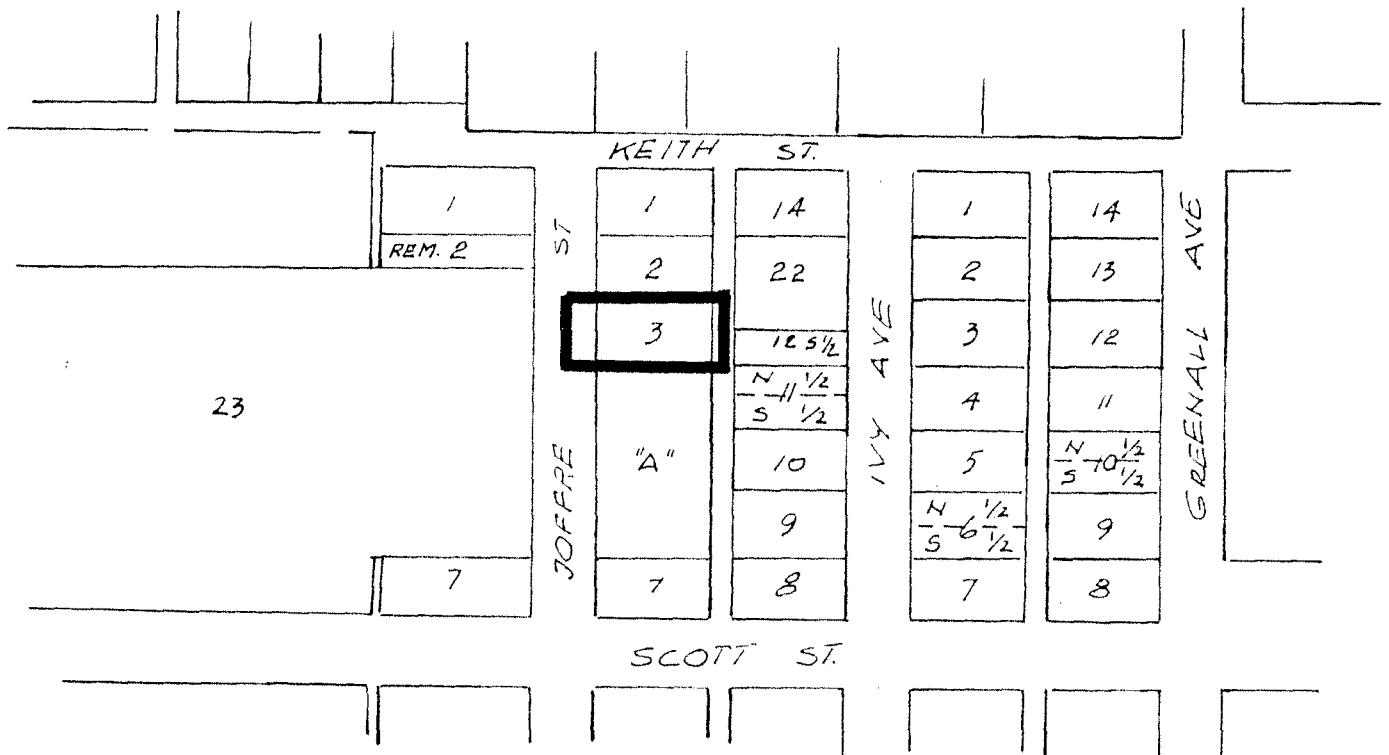

MAYOR


CLERK

BYLAW NUMBER 8000 BEING A BYLAW TO AMEND
BYLAW NUMBER 4742 BEING THE BURNABY ZONING BYLAW 1965

PROPERTY REZONED TO: P8 PARKING DISTRICT

Lot 3, Blk. 2, D.L. 161, Plan 1742



THE AREA(S) SHOWN ABOVE
OUTLINED IN BLACK (—)
IS (ARE) REZONED:

FROM: M5 LIGHT INDUSTRIAL DISTRICT
TO: P8 PARKING DISTRICT

MAP "B"

James Hudson

PLANNING DEPARTMENT	
SCALE	1" = 200'
DRAWN	E.P.
DATE	1982 NOV.

THE CORPORATION OF THE DISTRICT OF BURNABY

OFFICIAL ZONING MAP

No. RZ 1108