

THE CORPORATION OF THE DISTRICT OF BURNABY

BYLAW NO. 7867

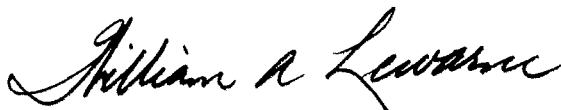
A BYLAW to Stop Up and Close to Traffic
Portions of Road and Lane

WHEREAS those portions of road and lane shown on the plan annexed hereto dedicated by Plans 1733, 2463 and 34019 are no longer required for road purposes.

NOW THEREFORE the Council of The Corporation of the District of Burnaby ENACTS as follows:

1. This bylaw may be cited as "BURNABY ROAD CLOSING BYLAW NO. 12, 1981".
2. Those portions of road and lane situate, lying and being in the Municipality of Burnaby, in the Province of British Columbia, and being more particularly known and described as those portions of road and lane in District Lot 32, Group 1, New Westminster District dedicated by Plans 1733, 2463 and 34019 shown outlined on plan prepared by R. P. Justice, B.C.L.S., deposited in the Land Title Office under Number _____, a copy of which is hereunto annexed, are hereby stopped up and closed to traffic.
3. The Municipal Clerk is hereby authorized and empowered to petition the Minister of Municipal Affairs to abandon the said portions of road and lane more particularly described in section 2 hereof and vest title thereto in the name of The Corporation of the District of Burnaby.

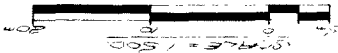
Read a first time this 11th . day of January 1982
Read a second time this 11th day of January 1982
Read a third time this 11th day of January 1982
Reconsidered and adopted this 18th day of January 1982


M A Y O R

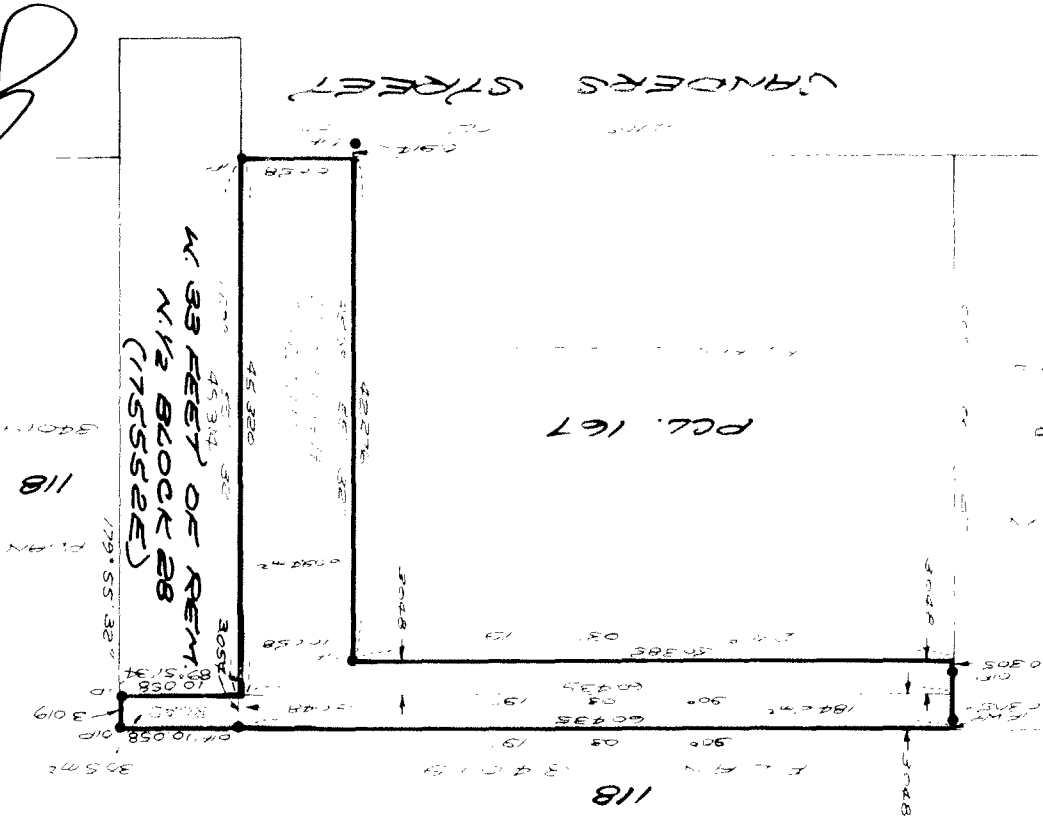

C L E R K

SOME BEING FROM DISTRICT LOT 32, GROUP 1, AS DEDICATED LANE AND ROAD BY PLAN 2463 AND DEDICATED LANE AND ROAD BY PLAN 1733, AND DEDICATED ROAD BY PLAN 3409, N.W.D.

PLAN



BEARINGS ARE ASTRO-NOMIC AND DERIVED FROM SURVEYS
 LEGEND
 ● AND INTERIORS FROM POST (SEE)
 ● AND INTERIORS FROM POST (SEE)
 ALL INTERIORS ARE IN WESTERLY
 EXCEPT WHERE OTHERWISE NOTED



James Hudson

CHECK

DATE

TOWN OF NEW WESTMINSTER, B.C.

SPURSTON & ASSOCIATES
 571 SAND STREET
 VICTORIA, B.C.

Bo Hudson
 (OVERSEER)

THE DISTRICT OF NEW WESTMINSTER HAS REVIEWED THIS PLAN AND APPROVED IT ON THE 15TH DAY OF DECEMBER 1981.

ALL INTERIORS FROM POST (SEE)

BEARINGS ARE ASTRO-NOMIC AND DERIVED FROM SURVEYS