

THE CORPORATION OF THE DISTRICT OF BURNABY

BY-LAW NO. 7848

A BY-LAW to amend By-Law No. 4742, being
"Burnaby Zoning By-Law 1965"

WHEREAS application for rezoning has been made to the Council.

AND WHEREAS the Council has held a public hearing thereon after duly giving notice of the hearing as prescribed by section 720 of the Municipal Act R.S.B.C. 1979.

NOW THEREFORE the Council of The Corporation of the District of Burnaby ENACTS as follows:

1. This By-law may be cited as "BURNABY ZONING BY-LAW 1965, AMENDMENT BY-LAW NO. 153, 19 81".
2. The Map (hereinafter called "Map 'A' ") attached to and forming an integral part of By-Law No. 4742, being "Burnaby Zoning By-Law 1965", and designated as the Official Zoning Map of The Corporation of the District of Burnaby, is hereby amended according to the Map (hereinafter called "Map 'B' "), marginally numbered R.Z. 1043 (e) annexed to this By-law, and in accordance with the explanatory legend, notations, references and boundaries designated, described, delimited and specified in particularity shown upon said Map 'B' ; and the various boundaries and districts shown upon said Map 'B' respectively are an amendment of and in substitution for the respective districts, designated and marked on said Map 'A' insofar as the same are changed, modified or varied thereby, and the said Map 'A' shall be deemed to be and is hereby declared to be amended accordingly and the said Map 'B' is hereby declared to be and shall form an integral part of said Map 'A', as if originally incorporated therein, and shall be interpreted accordingly.

Read a first time this 23rd day of NOVEMBER 19 81

Read a second time this 14th day of DECEMBER 19 81

Read a third time this 21st day of DECEMBER 19 81

Reconsidered and adopted this 4th day of JANUARY 19 82.


MAYOR

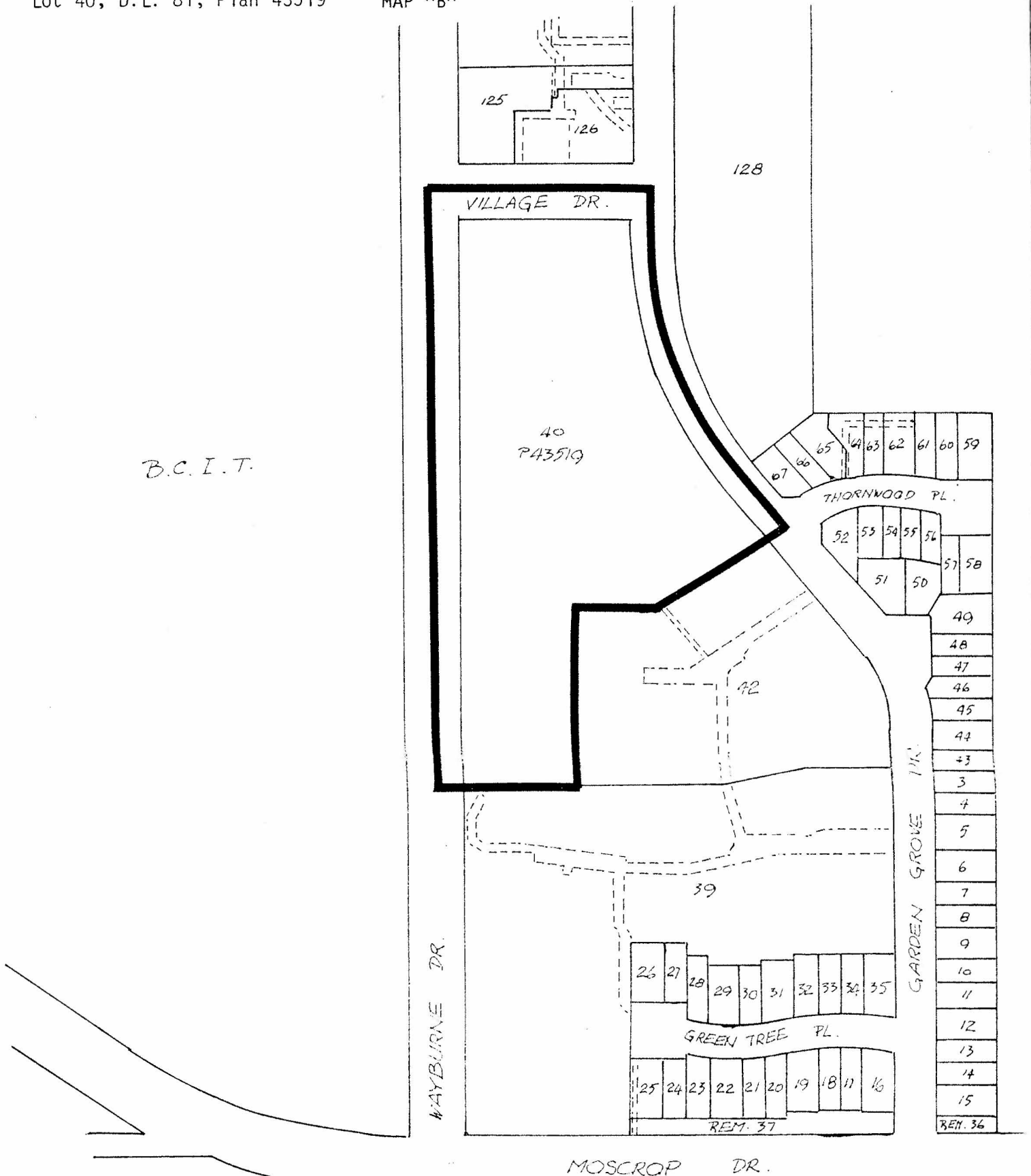

CLERK

BYLAW NUMBER 7848 BEING A BYLAW TO AMEND
BYLAW NUMBER 4742 BEING THE BURNABY ZONING BYLAW 1965

PROPERTY REZONED TO: P3 PARK AND PUBLIC USE DISTRICT

Lot 40, D.L. 81, Plan 43519 MAP "B"

B.C.I.T.



THE AREA(S) SHOWN ABOVE
OUTLINED IN BLACK (—) IS (ARE) REZONED:

FROM: P4 CEMETERY DISTRICT
TO: P3 PARK AND PUBLIC USE DISTRICT

James Hudson

PLANNING DEPARTMENT
SCALE 1" : 200'
DRAWN E.P.
DATE

THE CORPORATION OF THE DISTRICT OF BURNABY

OFFICIAL ZONING MAP