

THE CORPORATION OF THE DISTRICT OF BURNABY

BY-LAW NO. 7755

A BY-LAW to amend By-Law No. 4742, being
"Burnaby Zoning By-Law 1965"

WHEREAS application for rezoning has been made to the Council.

AND WHEREAS the Council has held a public hearing thereon after duly giving notice of the hearing as prescribed by section 720 of the Municipal Act R.S.B.C. 1979.

NOW THEREFORE the Council of The Corporation of the District of Burnaby ENACTS as follows:

1. This By-law may be cited as "BURNABY ZONING BY-LAW 1965, AMENDMENT BY-LAW NO. 98, 19 81".
2. The Map (hereinafter called "Map 'A' ") attached to and forming an integral part of By-Law No. 4742, being "Burnaby Zoning By-Law 1965", and designated as the Official Zoning Map of The Corporation of the District of Burnaby, is hereby amended according to the Map (hereinafter called "Map 'B' "), marginally numbered R.Z. 693 annexed to this By-law, and in accordance with the explanatory legend, notations, references and boundaries designated, described, delimited and specified in particularity shown upon said Map 'B' ; and the various boundaries and districts shown upon said Map 'B' respectively are an amendment of and in substitution for the respective districts, designated and marked on said Map 'A' insofar as the same are changed, modified or varied thereby, and the said Map 'A' shall be deemed to be and is hereby declared to be amended accordingly and the said Map 'B' is hereby declared to be and shall form an integral part of said Map 'A', as if originally incorporated therein, and shall be interpreted accordingly.

Read a first time this	10th day of	AUGUST	1981
Read a second time this	14th day of	SEPTEMBER	1981
Read a third time this	19th day of	MAY	1987
Reconsidered and adopted this	25th day of	MAY	1987


MAYOR

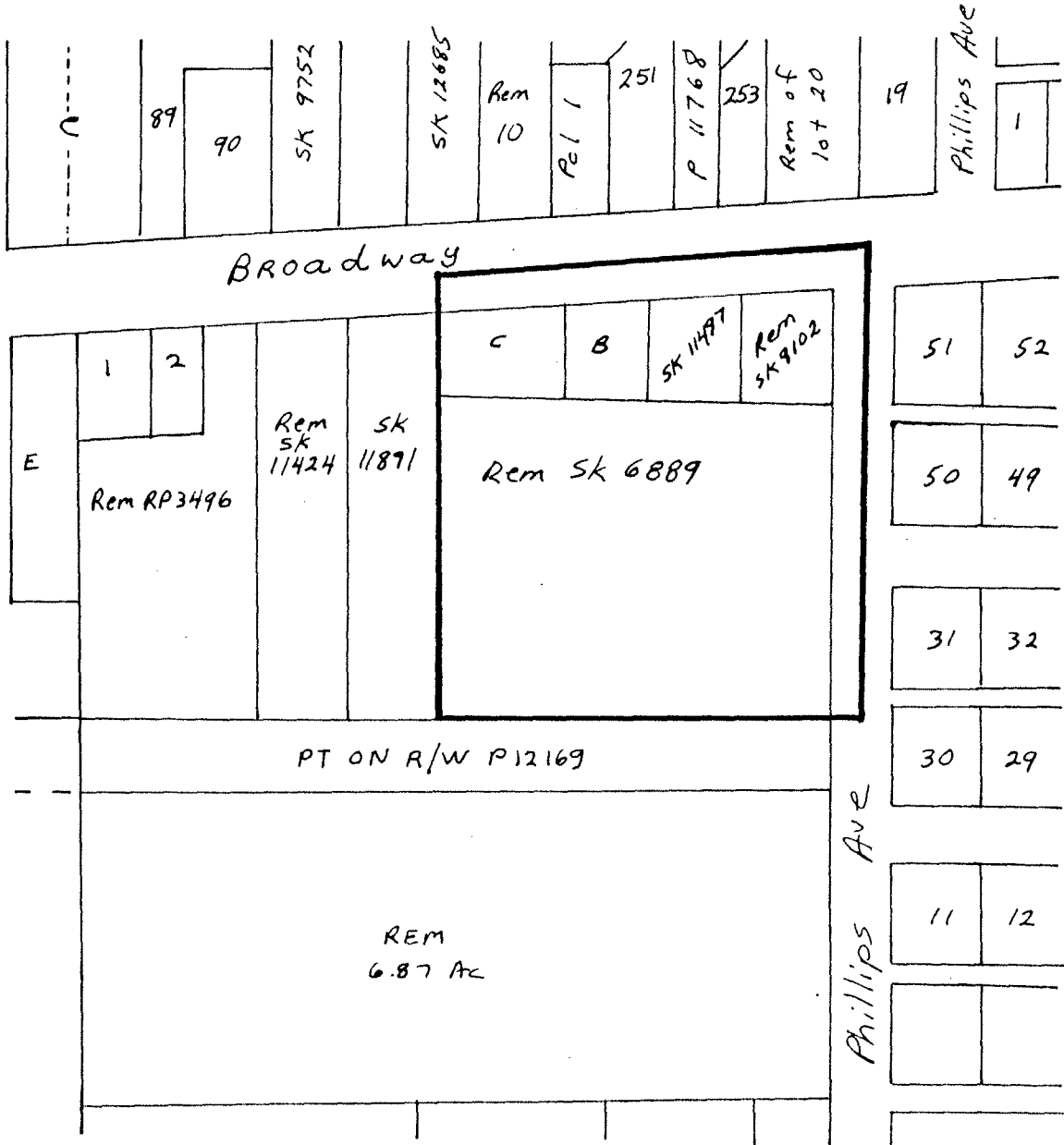

CLERK

BYLAW NUMBER 7755 BEING A BYLAW TO AMEND BYLAW NUMBER 4742 BEING THE BURNABY ZONING BYLAW 1965

PROPERTY REZONED TO: R2 RESIDENTIAL DISTRICT

Blk. 6 NE pt. of Sk. 6889, Ex P1s. 9102 & 9141, D.L. 59/136/137, P1. 3050;
Lot C of D.L. 59 & 136, P1. 21974; Lot B, Blk. 6, D.L. 59 & 136, P1. 21974
Lot 6 of Sk. 11457, D.L. 59, 136 & 137, P1. 3050; Pcl 1, Expl. P1. 9102,
Exc. Parcel "A", Expl. P1. 9141 and Ex. Pcl. 2 Expl. P1. 11457, Blk 6, D.L.
59 & 136, P1. 3050.

MAP "B"



THE AREA(S) SHOWN ABOVE
OUTLINED IN BLACK (—)
IS (ARE) REZONED:

From: A2 Small Holdings District
To: R2 Residential District

PLANNING DEPARTMENT		THE CORPORATION OF THE DISTRICT OF BURNABY	
SCALE	1" = 200'	<h2>OFFICIAL ZONING MAP</h2>	
DRAWN	G L		
DATE	8/07/29		
		No. RZ 693	