

THE CORPORATION OF THE DISTRICT OF BURNABY

BY-LAW NO. 7720

A BY-LAW to amend By-Law No. 4742, being  
"Burnaby Zoning By-Law 1965"

WHEREAS application for rezoning has been made to the  
Council.

AND WHEREAS the Council has held a public hearing thereon  
after duly giving notice of the hearing as prescribed by section 720  
of the Municipal Act R.S.B.C. 1979.

NOW THEREFORE the Council of The Corporation of the  
District of Burnaby ENACTS as follows:

1. This By-Law may be cited as "BURNABY ZONING BY-LAW 1965,  
AMENDMENT BY-LAW NO. 67 , 1981".

2. The Map (hereinafter called "Map 'A'") attached to and  
forming an integral part of By-Law No. 4742, being "Burnaby Zoning By-  
Law 1965", and designated as the Official Zoning Map of The Corporation  
of the District of Burnaby, is hereby amended according to the Map  
(hereinafter called "Map 'B'"), marginally numbered R.Z. 962  
annexed to this By-Law, and in accordance with the explanatory legend,  
notations, references and boundaries designated, described, delimited  
and specified in particularity shown upon said Map 'B'; and the various  
boundaries and districts shown upon said Map 'B' respectively are an  
amendment of and in substitution for the respective districts, designated  
and marked on said Map 'A' insofar as the same are changed, modified or  
varied thereby, and the said Map 'A' shall be deemed to be and is hereby  
declared to be amended accordingly and the said Map 'B' is hereby  
declared to be and shall form an integral part of said Map 'A', as if  
originally incorporated therein, and shall be interpreted accordingly.

Read a first time this 13th day of JULY , 19 81

Read a second time this 10th day of AUGUST , 19 81

Read a third time this 31st day of JANUARY , 19 83

Reconsidered and adopted this 7th day of FEBRUARY , 19 83

*Egon Nikolei*  
ACTING M A Y O R

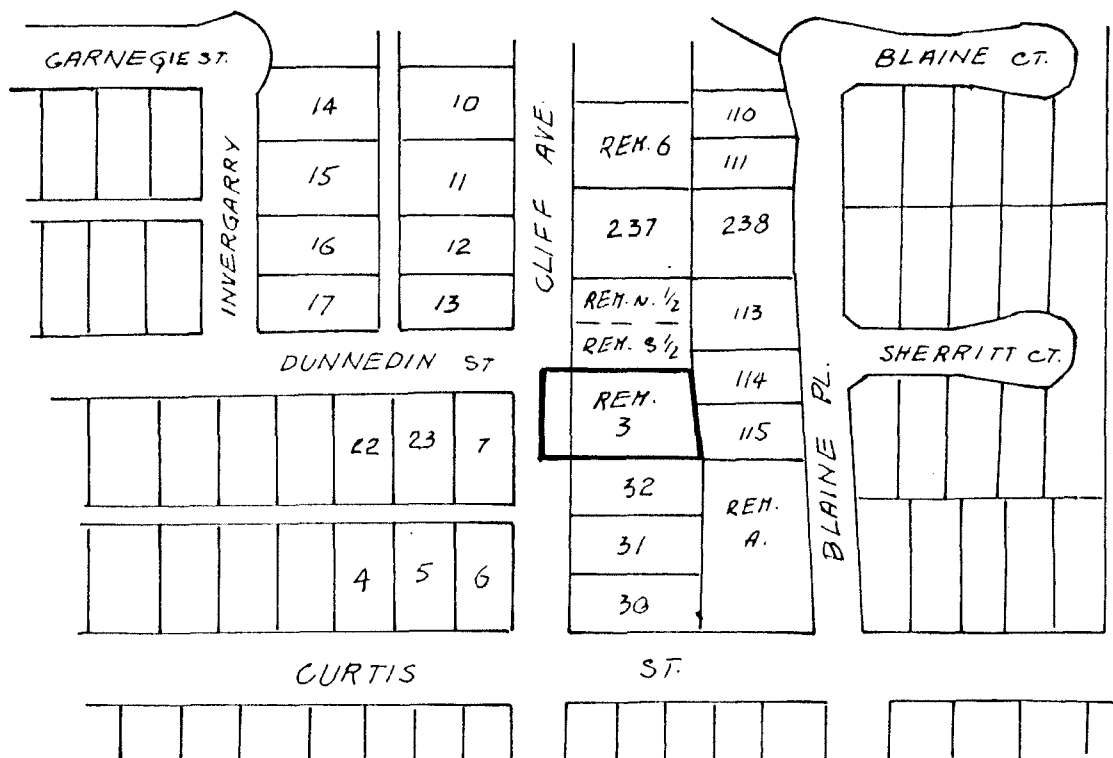
*James Hudson*  
C L E R K

BYLAW NUMBER 7720 BEING A BYLAW TO AMEND  
BYLAW NUMBER 4742 BEING THE BURNABY ZONING BYLAW 1965

PROPERTY REZONED TO: R9 RESIDENTIAL DISTRICT

Lot 3 exc P1. 28286, B1k. 6, D.L. 207, P1. 4032

MAP "B"



THE AREA(S) SHOWN ABOVE  
OUTLINED IN BLACK (—)  
IS (ARE) REZONED:

FROM: R4 RESIDENTIAL DISTRICT  
TO: R9 RESIDENTIAL DISTRICT



*James Hudson*  
 THE CORPORATION OF THE DISTRICT OF BURNABY

PLANNING DEPARTMENT	
SCALE	1" = 200'
DRAWN	E.P.
DATE	1981 JULY

OFFICIAL ZONING MAP

No. RZ 962