

THE CORPORATION OF THE DISTRICT OF BURNABY

BY-LAW NO. 7698

A BY-LAW to amend By-Law No. 4742, being
"Burnaby Zoning By-Law 1965"

WHEREAS application for rezoning has been made to the
Council.

AND WHEREAS the Council has held a public hearing thereon
after duly giving notice of the hearing as prescribed by section 720
of the Municipal Act R.S.B.C. 1979.

NOW THEREFORE the Council of The Corporation of the
District of Burnaby ENACTS as follows:

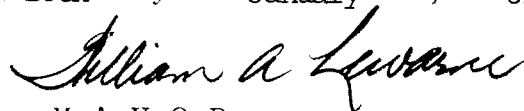
1. This By-Law may be cited as "BURNABY ZONING BY-LAW 1965,
AMENDMENT BY-LAW NO. 47, 1981".
2. The Map (hereinafter called "Map 'A'") attached to and
forming an integral part of By-Law No. 4742, being "Burnaby Zoning By-
Law 1965", and designated as the Official Zoning Map of The Corporation
of the District of Burnaby, is hereby amended according to the Map
(hereinafter called "Map 'B'"), marginally numbered R.Z. 942
annexed to this By-Law, and in accordance with the explanatory legend,
notations, references and boundaries designated, described, delimited
and specified in particularity shown upon said Map 'B'; and the various
boundaries and districts shown upon said Map 'B' respectively are an
amendment of and in substitution for the respective districts, designated
and marked on said Map 'A' insofar as the same are changed, modified or
varied thereby, and the said Map 'A' shall be deemed to be and is hereby
declared to be amended accordingly and the said Map 'B' is hereby
declared to be and shall form an integral part of said Map 'A', as if
originally incorporated therein, and shall be interpreted accordingly.

Read a first time this 29th day of June , 1981

Read a second time this 27th day of July , 1981

Read a third time this 21st day of September , 1981

Reconsidered and adopted this 18th day of January , 1982.


MAYOR

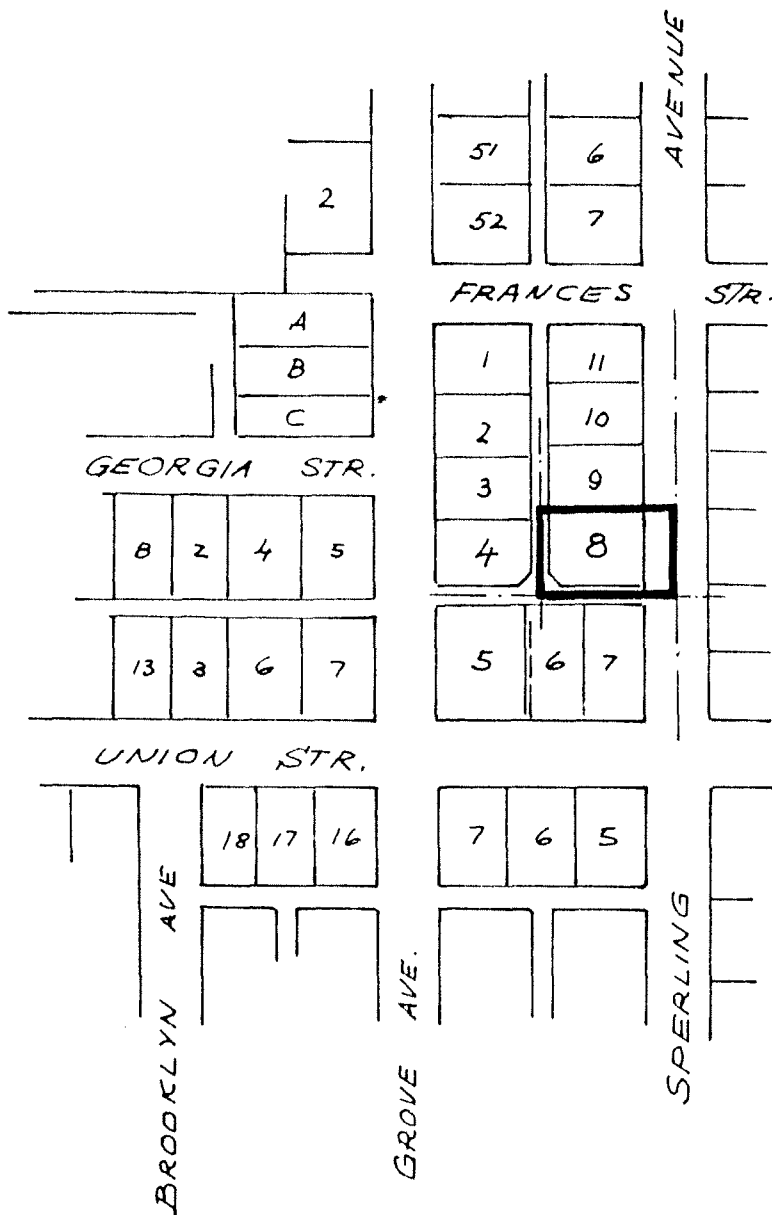

CLERK

BYLAW NUMBER 7698 BEING A BYLAW TO AMEND
BYLAW NUMBER 4742 BEING THE BURNABY ZONING BYLAW 1965

PROPERTY REZONED TO: R9 RESIDENTIAL DISTRICT

Lot 8, S.D. 1, BLK. 3, D.L. 206, PL. 19483

MAP "B"



THE AREA(S) SHOWN ABOVE
OUTLINED IN BLACK (—)
IS (ARE) REZONED:

FROM: R5 RESIDENTIAL DISTRICT
TO: R9 RESIDENTIAL DISTRICT

James Hudson

PLANNING DEPARTMENT
SCALE 1" = 200'
DRAWN H.A.F.
DATE JUNE 1981

THE CORPORATION OF THE DISTRICT OF BURNABY

OFFICIAL ZONING MAP