

THE CORPORATION OF THE DISTRICT OF BURNABY

BY-LAW NO. 7531

A BY-LAW to amend By-Law No. 4742, being  
"Burnaby Zoning By-Law 1965".

WHEREAS application for rezoning has been made to the  
Council.

AND WHEREAS the Council has held a public hearing thereon  
after duly giving notice of the time and place of such hearing.

NOW THEREFORE the Council of The Corporation of the  
District of Burnaby ENACTS as follows:


1. This By-law may be cited as "BURNABY ZONING BY-LAW 1965,  
AMENDMENT BY-LAW NO. 30 1980".
2. The Map (hereinafter called "Map 'A'") attached to and  
forming an integral part of By-Law No. 4742, being "Burnaby Zoning By-  
Law 1965", and designated as the Official Zoning Map of The Corporation  
of the District of Burnaby, is hereby amended according to the Map  
(hereinafter called "Map 'B'"), marginally numbered R.Z. 863  
annexed to this By-law, and in accordance with the explanatory legend,  
notations, references and boundaries designated, described, delimited  
and specified in particularity shown upon said Map 'B'; and the various  
boundaries and districts shown upon said Map 'B' respectively are an  
amendment of and in substitution for the respective districts, designated  
and marked on said Map 'A' insofar as the same are changed, modified or  
varied thereby, and the said Map 'A' shall be deemed to be and is hereby  
declared to be amended accordingly and the said Map 'B' is hereby declared  
to be and shall form an integral part of said Map 'A', as if originally  
incorporated therein, and shall be interpreted accordingly.

Read a first time this 5th day of August 1980

Read a second time this 2nd day of September 1980

Read a third time this 29th day of September 1980

Reconsidered and adopted this 6th day of October 1980.



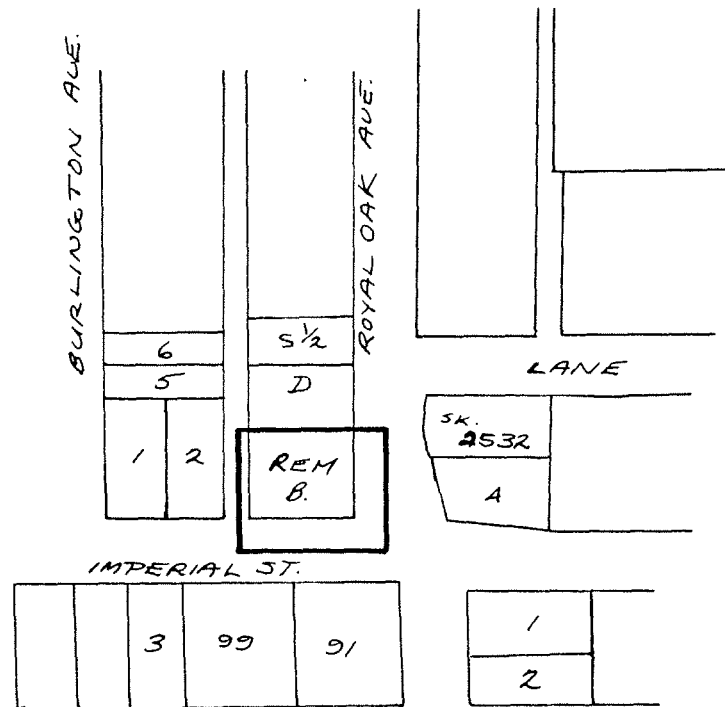
M A Y O R



C L E R K

BYLAW NUMBER 7531 BEING A BYLAW TO AMEND  
 BYLAW NUMBER 4742 BEING THE BURNABY ZONING BYLAW 1965

PROPERTY REZONED TO: RM2 - MULTIPLE FAMILY RESIDENTIAL DISTRICT  
 LEGAL: Lot B, E. Pl. 8898, Blk. 31, D.L. 152, Plan 5641, NWD



THE AREA(S) SHOWN ABOVE  
 OUTLINED IN BLACK (—)  
 IS (ARE) REZONED:

FROM: C6 - Gasoline Service Station District  
 TO: RM2 - Multiple Family Residential District

*James Hudson*

PLANNING DEPARTMENT	
SCALE	1" : 200'
DRAWN	R.P.
DATE	80 06 16

THE CORPORATION OF THE DISTRICT OF BURNABY

## OFFICIAL ZONING MAP

No. RZ 863

Dated: July 24, 1980

THE CORPORATION OF THE DISTRICT OF BURNABY

BY-LAW NO. 7531

---

AMENDMENT BY-LAW NO. 30 1980

---

Legal Department  
The Corporation of the  
District of Burnaby  
4949 Canada Way  
Burnaby, B.C.  
V5G 1M2