

THE CORPORATION OF THE DISTRICT OF BURNABY

BY-LAW NO. 7521

A BY-LAW to amend By-Law No. 4742, being  
"Burnaby Zoning By-Law 1965".

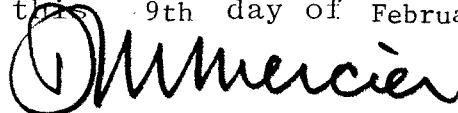
WHEREAS application for rezoning has been made to the  
Council.

AND WHEREAS the Council has held a public hearing thereon  
after duly giving notice of the time and place of such hearing.

NOW THEREFORE the Council of The Corporation of the  
District of Burnaby ENACTS as follows:

1. This By-law may be cited as "BURNABY ZONING BY-LAW 1965,  
AMENDMENT BY-LAW NO. 26, 19 80 ".
2. The Map (hereinafter called "Map 'A'") attached to and  
forming an integral part of By-Law No. 4742, being "Burnaby Zoning By-  
Law 1965", and designated as the Official Zoning Map of The Corporation  
of the District of Burnaby, is hereby amended according to the Map  
(hereinafter called "Map 'B'"), marginally numbered R.Z. 858  
annexed to this By-law, and in accordance with the explanatory legend,  
notations, references and boundaries designated, described, delimited  
and specified in particularity shown upon said Map 'B'; and the various  
boundaries and districts shown upon said Map 'B' respectively are an  
amendment of and in substitution for the respective districts, designated  
and marked on said Map 'A' insofar as the same are changed, modified or  
varied thereby, and the said Map 'A' shall be deemed to be and is hereby  
declared to be amended accordingly and the said Map 'B' is hereby declared  
to be and shall form an integral part of said Map 'A', as if originally  
incorporated therein, and shall be interpreted accordingly.

Read a first time this	23rd day of	June	19 80
Read a second time this	23rd day of	June	19 80
Read a third time this	2nd day of	February	19 81
Reconsidered and adopted this	9th day of	February	19 81

  
M A Y O R

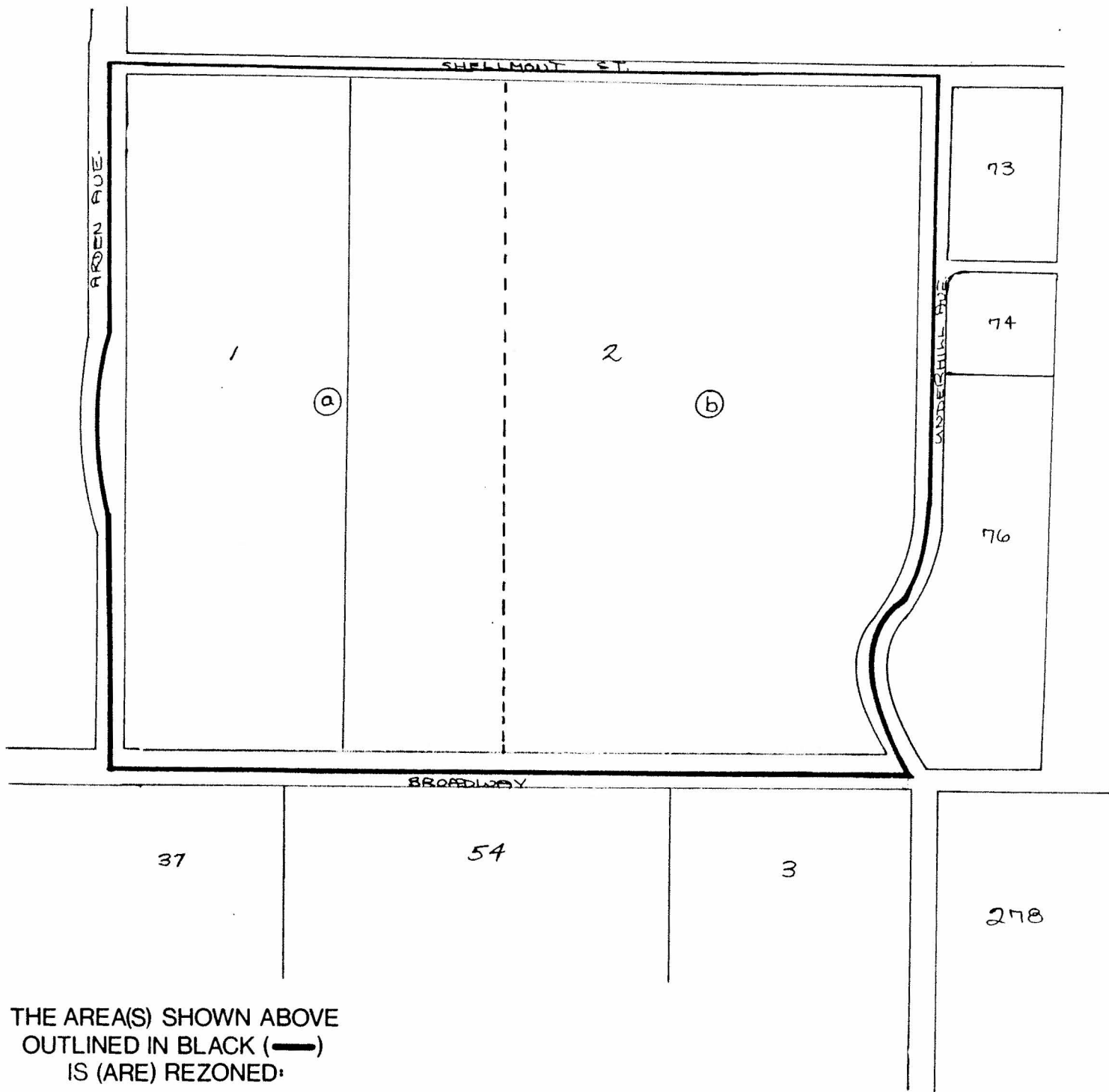
  
C L E R K

# BYLAW NUMBER 7521 BEING A BYLAW TO AMEND BYLAW NUMBER 4742 BEING THE BURNABY ZONING BYLAW 1965

PROPERTY REZONED TO: R2 - RESIDENTIAL DISTRICT (a)  
AND M7a- PETROLEUM STORAGE TANK DISTRICT (b)

LEGAL: Lot 1 of D.L. 142, Plan 14043, Lot 2 Ex. Pt. on Bylaw 3729,  
D.L. 142, Plan 14043.

MAP "B"



THE AREA(S) SHOWN ABOVE  
OUTLINED IN BLACK (—)  
IS (ARE) REZONED:

FROM: M3 - HEAVY INDUSTRIAL DISTRICT  
TO: R2 - RESIDENTIAL DISTRICT  
and M7a- PETROLEUM STORAGE TANK DISTRICT

*James Hudson*

PLANNING DEPARTMENT	
SCALE	1" : 400'
DRAWN	R.P.
DATE	20 05 21

THE CORPORATION OF THE DISTRICT OF BURNABY

## OFFICIAL ZONING MAP