

THE CORPORATION OF THE DISTRICT OF BURNABY

BY-LAW NO. 7515

A BY-LAW to amend By-Law No. 4742, being  
"Burnaby Zoning By-Law 1965"

WHEREAS application for rezoning has been made to the  
Council.

AND WHEREAS the Council has held a public hearing thereon  
after duly giving notice of the time and place of such hearing.

NOW THEREFORE the Council of The Corporation of the District  
of Burnaby ENACTS as follows:

1. This By-law may be cited as "BURNABY ZONING BY-LAW 1965,  
AMENDMENT BY-LAW NO. 21, 1980".
2. By-Law No. 4742 is amended by rezoning those lands described  
as Lot 299, District Lots 6 and 56, Group 1, Plan 47565, New Westminster  
District, shown outlined on the plan attached Numbered R.Z. # 856 to  
Multiple Family Residential District (RM1) and the map attached to and  
forming an integral part of By-Law No. 4742 and designated as the official  
zoning map of The Corporation of the District of Burnaby is amended  
accordingly.

Read a first time this 20<sup>th</sup> day of May 1980.  
Read a second time this 20<sup>th</sup> day of May 1980.  
Read a third time this 20<sup>th</sup> day of May 1980.  
Reconsidered and adopted this 18<sup>th</sup> day of August 1980.



M A Y O R



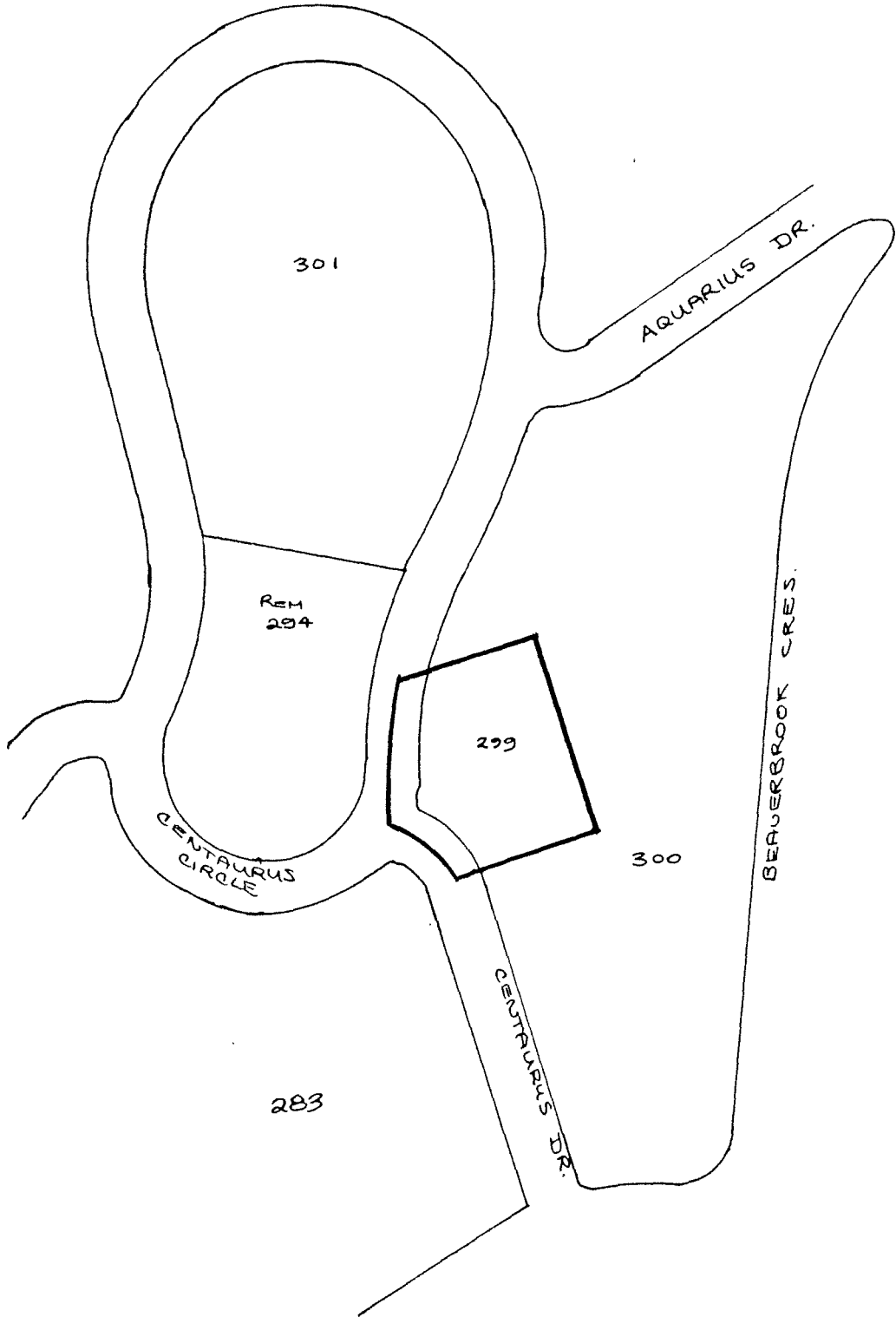
C L E R K

BYLAW NUMBER 7515 BEING A BYLAW TO AMEND  
 BYLAW NUMBER 4742 BEING THE BURNABY ZONING BYLAW 1965

PROPERTY REZONED TO: MULTIPLE FAMILY RESIDENTIAL DISTRICT (RM1)

LEGAL: D.L. 6 and 56, Lot 299, Plan 47565

MAP "B"



THE AREA(S) SHOWN ABOVE  
 OUTLINED IN BLACK (—)  
 IS (ARE) REZONED:

FROM: CD - COMPREHENSIVE DEVELOPMENT

TO: RM1 - MULTIPLE FAMILY RESIDENTIAL DISTRICT

*James Hudson*

PLANNING DEPARTMENT		THE CORPORATION OF THE DISTRICT OF BURNABY	
SCALE	1" : 200'	OFFICIAL ZONING MAP No. RZ 856	
DRAWN	R.P.		
DATE	80 MAY 13		