

THE CORPORATION OF THE DISTRICT OF BURNABY

BY-LAW NO. 7497

A BY-LAW to amend By-Law No. 4742, being  
"Burnaby Zoning By-Law 1965".

WHEREAS application for rezoning has been made to the  
Council.

AND WHEREAS the Council has held a public hearing thereon  
after duly giving notice of the time and place of such hearing.

NOW THEREFORE the Council of The Corporation of the  
District of Burnaby ENACTS as follows:

1. This By-law may be cited as "BURNABY ZONING BY-LAW 1965,  
AMENDMENT BY-LAW NO. 15, 19 80".

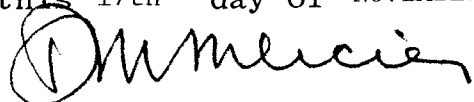
2. The Map (hereinafter called "Map 'A'") attached to and  
forming an integral part of By-Law No. 4742, being "Burnaby Zoning By-  
Law 1965", and designated as the Official Zoning Map of The Corporation  
of the District of Burnaby, is hereby amended according to the Map  
(hereinafter called "Map 'B'"), marginally numbered R.Z. 844  
annexed to this By-law, and in accordance with the explanatory legend,  
notations, references and boundaries designated, described, delimited  
and specified in particularity shown upon said Map 'B'; and the various  
boundaries and districts shown upon said Map 'B' respectively are an  
amendment of and in substitution for the respective districts, designated  
and marked on said Map 'A' insofar as the same are changed, modified or  
varied thereby, and the said Map 'A' shall be deemed to be and is hereby  
declared to be amended accordingly and the said Map 'B' is hereby declared  
to be and shall form an integral part of said Map 'A', as if originally  
incorporated therein, and shall be interpreted accordingly.

Read a first time this 4th day of APRIL 19 80

Read a second time this 4th day of APRIL 19 80

Read a third time this 20th day of OCTOBER 19 80

Reconsidered and adopted this 17th day of NOVEMBER 19 80



M A Y O R



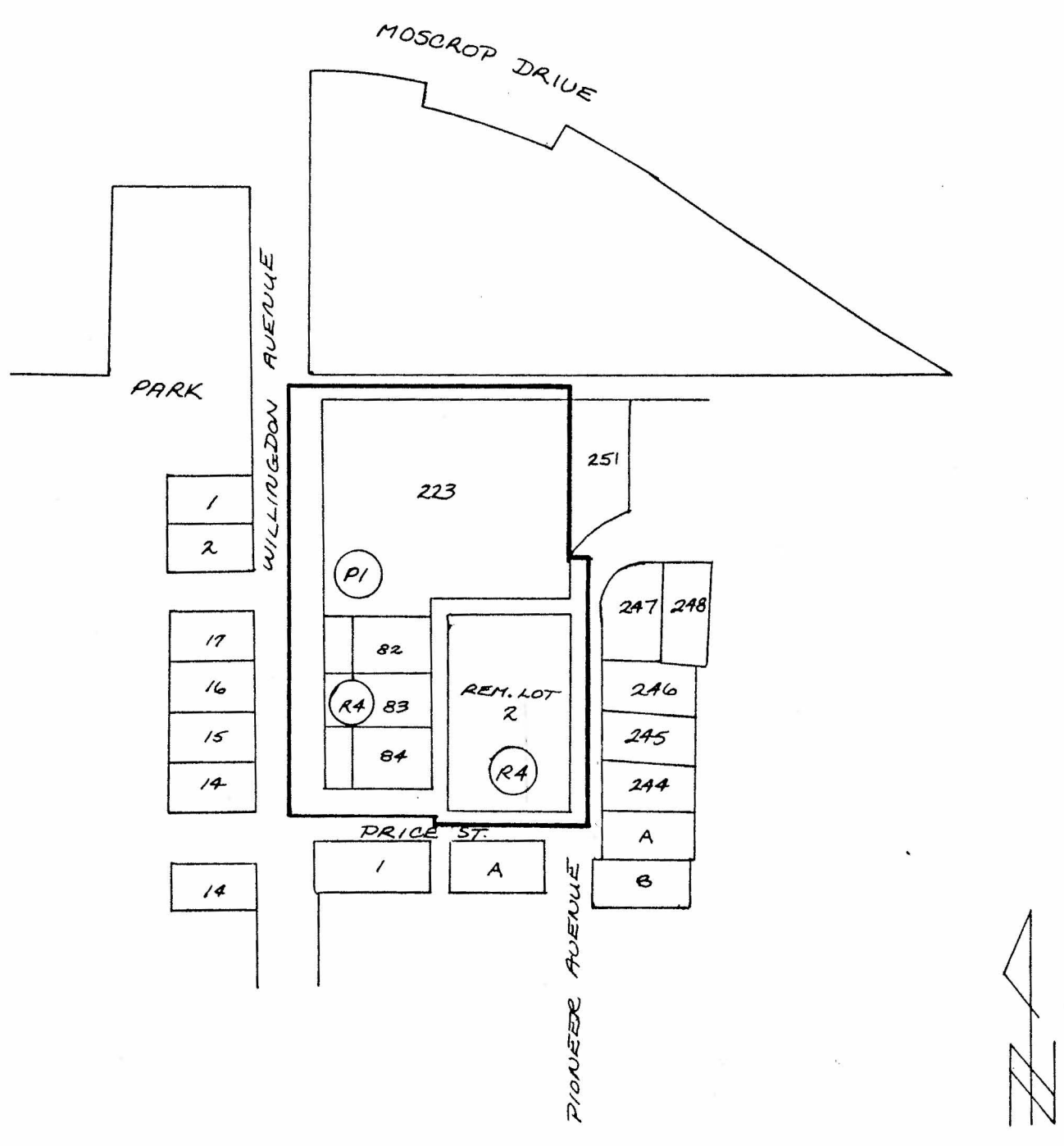
C L E R K

# BYLAW NUMBER 7497 BEING A BYLAW TO AMEND BYLAW NUMBER 4742 BEING THE BURNABY ZONING BYLAW 1965

PROPERTY REZONED TO: P5 - COMMUNITY INSTITUTIONAL DISTRICT

LEGAL: D.L. 33, Lot 223, Plan 42095  
D.L. 33, Lots 82 and 83, Plan 20532  
D.L. 33, Rem. Lot 2, Ex. Sk. 1495 and 6657, Plan 944  
D.L. 33, Lot 84, Plan 25032

MAP "B"



THE AREA(S) SHOWN ABOVE  
OUTLINED IN BLACK (—)  
IS (ARE) REZONED:

FROM: P1 NEIGHBOURHOOD INSTITUTIONAL DISTRICT  
and R4 RESIDENTIAL DISTRICT  
TO: P5 COMMUNITY INSTITUTIONAL DISTRICT

*James Hudson*

PLANNING DEPARTMENT	THE CORPORATION OF THE DISTRICT OF BURNABY
SCALE 1":200'	OFFICIAL ZONING MAP
DRAWN R.P.	
DATE 80 03 18	
No. RZ 844	