

THE CORPORATION OF THE DISTRICT OF BURNABY

BY-LAW NO. 7414

A BY-LAW to amend By-Law No. 4742, being  
"Burnaby Zoning By-Law 1965".

WHEREAS application for rezoning has been made to the  
Council.

AND WHEREAS the Council has held a public hearing thereon  
after duly giving notice of the time and place of such hearing.

NOW THEREFORE the Council of The Corporation of the  
District of Burnaby ENACTS as follows:

1. This By-law may be cited as "BURNABY ZONING BY-LAW 1965,  
AMENDMENT BY-LAW NO. 38, 1979".
2. The Map (hereinafter called "Map 'A'") attached to and  
forming an integral part of By-Law No. 4742, being "Burnaby Zoning By-  
Law 1965", and designated as the Official Zoning Map of The Corporation  
of the District of Burnaby, is hereby amended according to the Map  
(hereinafter called "Map 'B'"), marginally numbered R.Z. 825,  
annexed to this By-law, and in accordance with the explanatory legend,  
notations, references and boundaries designated, described, delimited  
and specified in particularity shown upon said Map 'B'; and the various  
boundaries and districts shown upon said Map 'B' respectively are an  
amendment of and in substitution for the respective districts, designated  
and marked on said Map 'A' insofar as the same are changed, modified or  
varied thereby, and the said Map 'A' shall be deemed to be and is hereby  
declared to be amended accordingly and the said Map 'B' is hereby declared  
to be and shall form an integral part of said Map 'A', as if originally  
incorporated therein, and shall be interpreted accordingly.

Read a first time this 22 day of OCTOBER 1979

Read a second time this 22 day of OCTOBER 1979

Read a third time this 22 day of OCTOBER 1979

Reconsidered and adopted this 29 day of OCTOBER 1979

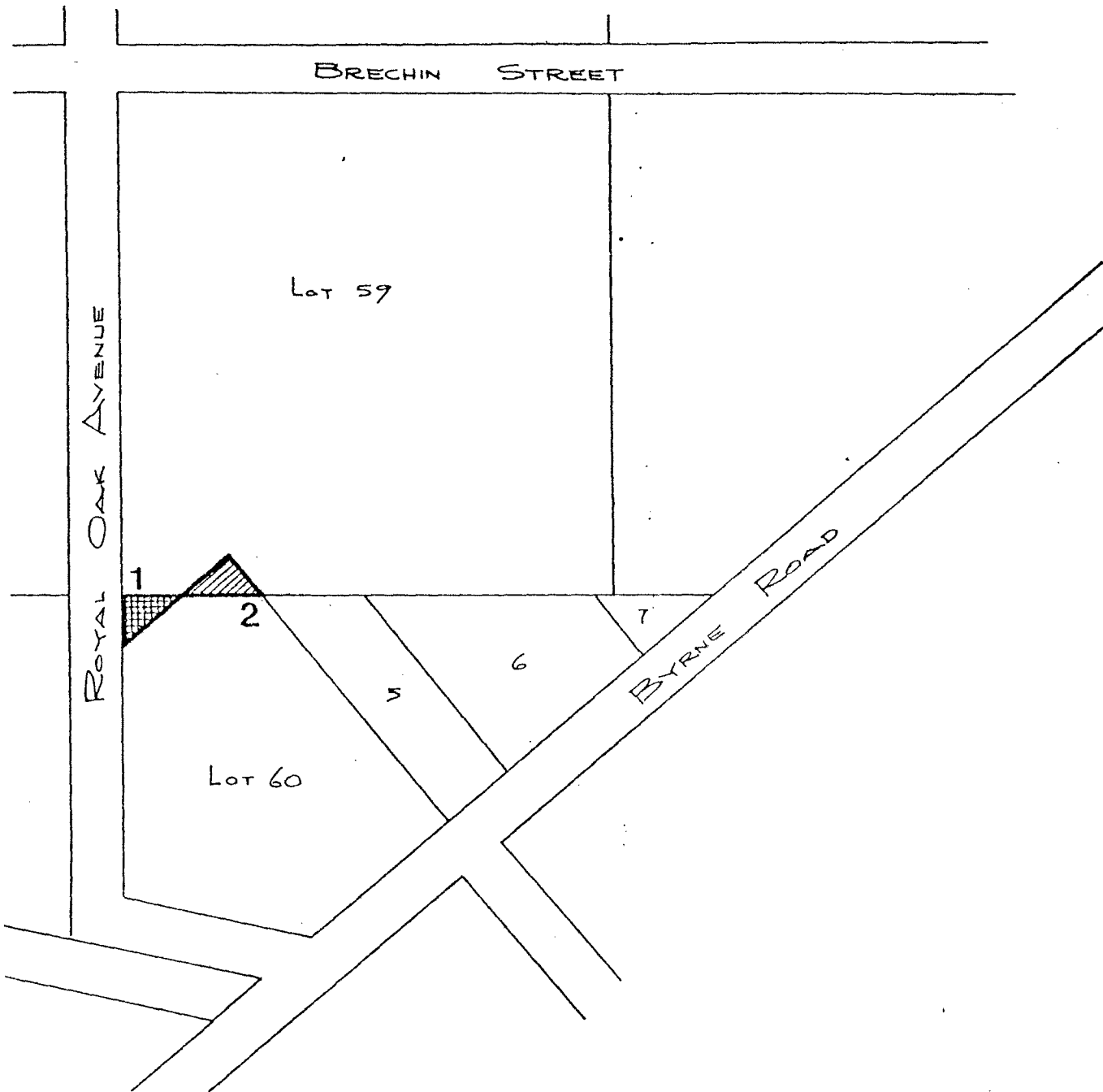
  
MAYOR

  
CLERK


BYLAW NUMBER 7414 BEING A BYLAW TO AMEND  
BYLAW NUMBER 4742 BEING THE BURNABY ZONING BYLAW 1965


PROPERTY REZONED TO: 1. PARK AND PUBLIC USE DISTRICT (P3)  
MAP "B" 2. GENERAL INDUSTRIAL DISTRICT (M2)

- LEGALS:
1. That portion of Lot 59, D.L. 162, Group 1, Plan 57708, N.W.D. formerly described as all that portion of Lot 4, Block "A", D.L. 162, Group 1, Plan 7195, N.W.D., lying within the boundaries of Lot 59 on Plan deposited Number 57708
  2. That portion of Lot 60, D.L. 162, Group 1, Plan 57708, N.W.D. formerly described as all that portion of the South Half of Lot 8, D.L. 162, Group 1, Plan 7195, N.W.D., lying within the boundaries of Lot 60 on Plan deposited Number 57708.



THE AREA(S) SHOWN ABOVE  
OUTLINED IN BLACK (—)  
IS (ARE) REZONED:

 From: GENERAL INDUSTRIAL DISTRICT (M2)  
To: PARK AND PUBLIC USE DISTRICT (P3)

 From: PARK AND PUBLIC USE DISTRICT (P3)  
To: GENERAL INDUSTRIAL DISTRICT (M2)



*James Judson*

|                     |  |            |
|---------------------|--|------------|
| PLANNING DEPARTMENT | THE CORPORATION OF THE DISTRICT OF BURNABY |            |
| SCALE 1:2400"       | OFFICIAL ZONING MAP                        |            |
| AWN PR              |  |            |
| DATE 1979           |  |            |
|                     |  | No. RZ 325 |