

THE CORPORATION OF THE DISTRICT OF BURNABY

BY-LAW NO. 7404

A BY-LAW to Stop Up and Close to Traffic
Portions of Road and Lane

WHEREAS those portions of road and lane shown outlined in red, green and purple on the plan annexed hereto dedicated by Plan 290, Plan 1321 and gazetted on September 29, 1965 as shown on Plan 26625 are no longer required for road purposes.

NOW THEREFORE the Council of The Corporation of the District of Burnaby ENACTS as follows:

1. This By-law may be cited as "BURNABY ROAD CLOSING BY-LAW NO. 8, 1979".
2. Those portions of road and lane situate, lying and being in the Municipality of Burnaby, in the Province of British Columbia, and being more particularly known and described as
 - (a) All that portion of road in District Lot 69, Group 1, dedicated by Plan 290, New Westminster District and containing by admeasurement 809 m^2 , shown outlined red on the By-law plan certified correct by Edmund T. Wong, B.C.L.S., on the 31st day of July, 1979, a print of which is annexed hereto; (hereinafter called "the said by-law plan")
 - (b) All that portion of lane in District Lot 69, Group 1, dedicated by Plan 1321, New Westminster District and containing by admeasurement 491 m^2 , shown outlined green on the said by-law plan; and
 - (c) All that portion of Lot 11, Block 19, District Lot 69, Group 1, gazetted on September 29, 1965 as shown on Plan 26625, New Westminster District and containing by admeasurement 135 m^2 , shown outlined purple on the said by-law plan;

are hereby stopped up and closed to traffic.

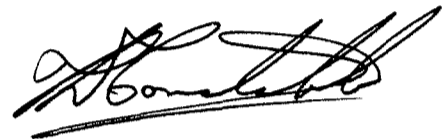
3. The Mayor and Clerk are hereby authorized and empowered to petition the Minister of Municipal Affairs to abandon the said portions of road and lane more particularly described in Section 2 hereof and vest title thereto in the name of The Corporation of the District of Burnaby.

Read a first time this 17th day of September 1979.

Read a second time this 17th day of September 1979.

Read a third time this 17th day of September 1979.

Reconsidered and adopted this 24th day of September 1979.



M A Y O R



C L E R K

BY-LAW PLAN TO ACCOMPANY THE CORPORATION OF THE DISTRICT OF BURNABY ROAD-CLOSING BY-LAW No. _____ FOR A PORTION OF ROAD IN DISTRICT LOT 69 DEDICATED BY PLAN 290, FOR A PORTION OF LANE IN BLOCK 19 DISTRICT LOT 69 DEDICATED BY PLAN 1321 AND THAT PORTION OF LOT 11 IN BLOCK 19 DISTRICT LOT 69 GAZETTED ON SEPTEMBER 29, 1965 AS SHOWN ON PLAN 26625; ALL IN GROUP ONE NEW WESTMINSTER DISTRICT
RATIO: 1 : 750

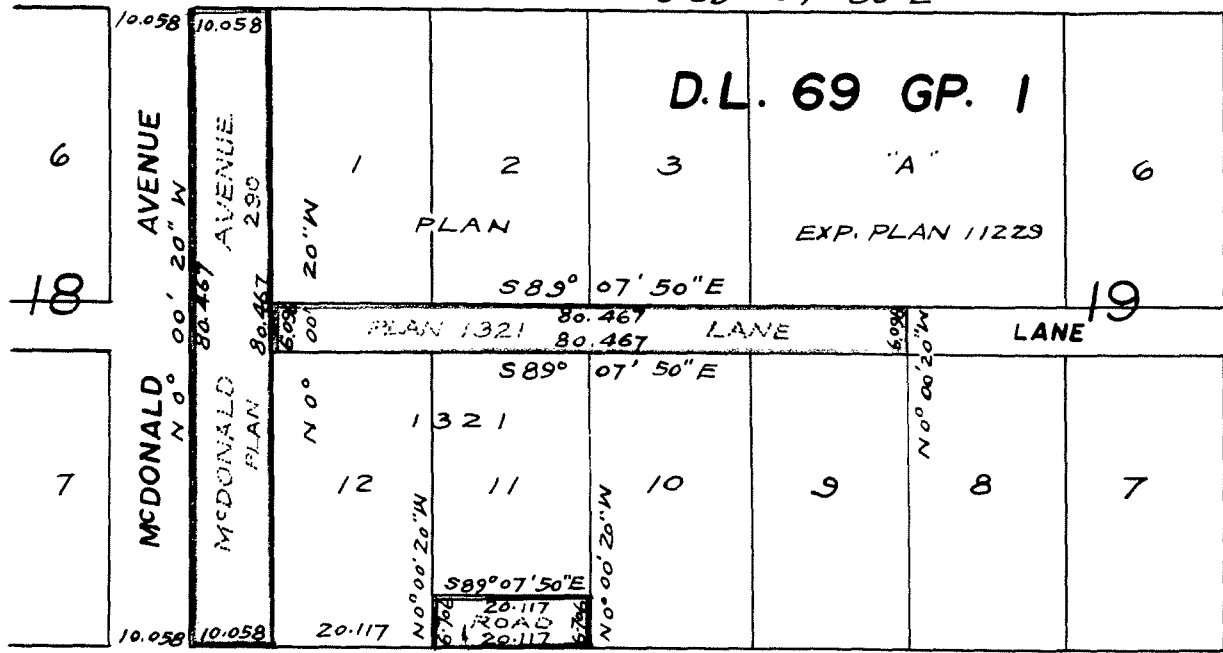
PLAN _____

Deposited in the Land Registry Office at New Westminster, B.C. this _____ day of _____, 197____

----- Registrar -----

REGENT STREET

S 89° 07' 50" E



S 89° 07' 50" E

CLYDESDALE STREET

THE CORPORATION OF THE DISTRICT OF BURNABY

MAYOR

MUNICIPAL CLERK

BOOK OF REFERENCE	
LEGAL DESCRIPTION	AREA
Portion of Road in D.L. 69 Gp. 1 Plan 290 N.W.D.	809 m ²
Portion of Lane in Block 19 D.L. 69 Gp. 1 Plan 1321 N.W.D.	491 m ²
That portion of Lot 11 in Blk. 19 D.L. 69 Gp. 1 N.W.D. Gazetted on Sept. 29, 1965 as shown on Plan 26625	135 m ²

Note: All distances shown are in metres
 m² denotes square metres
 Bearings are astronomic and are referred to meridian of Plan 47359

"This plan lies within the Greater Vancouver Regional District"

Ken K. Wong & Associates
 Dominion & B.C. Land Surveyors
 *1-3853 E. Hastings Street

CERTIFIED CORRECT according to Land Registry Office records.
 This 31st day of July, 1979

E. J. Hong
 B.C.L.S.