

THE CORPORATION OF THE DISTRICT OF BURNABY

BY-LAW NO. 7380

A BY-LAW to Stop Up and Close to Traffic
a Portion of Road

WHEREAS that portion of road shown outlined in red on the plan annexed hereto dedicated by Plan 1892 and Explanatory Plan 14745 is no longer required for road purposes.

NOW THEREFORE the Council of The Corporation of the District of Burnaby ENACTS as follows:

1. This By-law may be cited as "BURNABY ROAD CLOSING BY-LAW NO. 4, 1979".

2. That portion of road situate, lying and being in the Municipality of Burnaby, in the Province of British Columbia, and being that portion of road in N1/2 of District Lot 80, Group 1, New Westminster District, dedicated by Plan 1892 and Explanatory Plan 14745, shown outlined in red on plan attached hereto prepared by E. T. Wong, B.C.L.S., certified correct the 3rd day of January, 1979 and containing by admeasurement 494 m^2 and 248 m^2 , is hereby stopped up and closed to traffic.

3. The Mayor and Clerk are hereby authorized and empowered to petition the Minister of Municipal Affairs to abandon the said portion of road more particularly described in Section 2 hereof and vest title thereto in the name of The Corporation of the District of Burnaby.

Read a first time this 13th day of JULY 19 81.

Read a second time this 13th day of JULY 19 81.

Read a third time this 13th day of JULY 19 81.

Reconsidered and adopted this 27th day of JULY 19 81.



M A Y O R



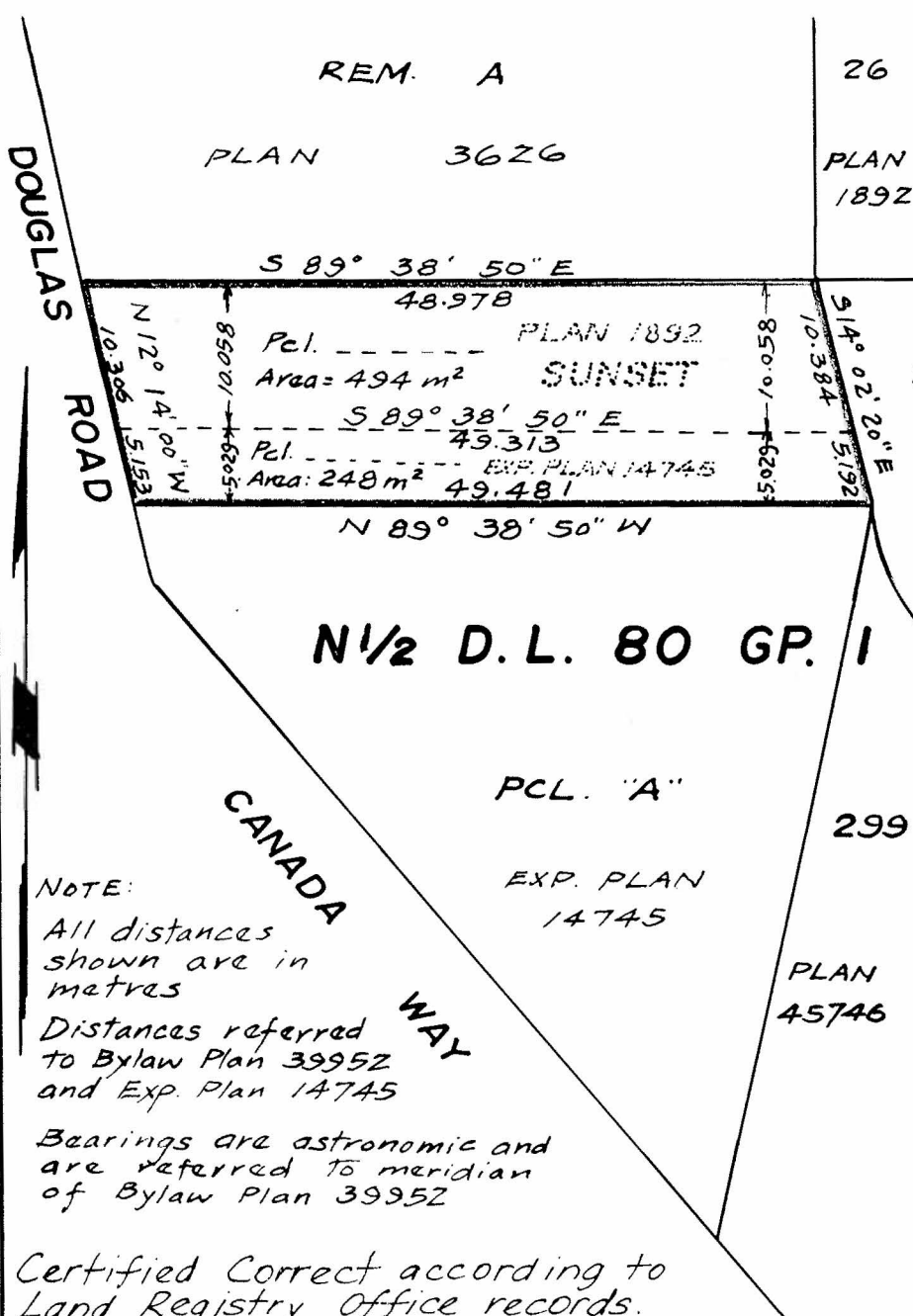
C L E R K

BY-LAW PLAN TO COMPANY THE CORPORATION OF THE DISTRICT OF BURNABY ROAD-CLOSING BY-LAW NO. _____ OF PORTIONS OF ROAD DEDICATED BY PLAN 1892 AND EXPLANATORY PLAN 14745, IN N¹/₂ OF DISTRICT LOT 80 GROUP 1 NEW WESTMINSTER DISTRICT

PLAN _____

Deposited in the Land Registry Office at New Westminster B.C., this _____ day of _____, 1979

RATIO 1:500



Registrar

NOTE:

All distances shown are in metres
 Distances referred to Bylaw Plan 39952 and Exp. Plan 14745
 Bearings are astronomic and are referred to meridian of Bylaw Plan 39952

THE CORPORATION OF THE DISTRICT OF BURNABY

MAYOR:

MUNICIPAL CLERK

Certified Correct according to Land Registry Office records. This 3rd day of January, 1979.

E. J. Wong
 B.C.L.S.

James Hudson

Ken K. Wong & Associates
 Dominion & B.C. Land Surveyors
 #1-3853 E. Hastings St.
 Burnaby, B.C. V5C 2H7

"This plan lies within the Greater Vancouver Regional District" Burnaby, B.C. V5C 2H7