

THE CORPORATION OF THE DISTRICT OF BURNABY

BY-LAW NO. 7374

A BY-LAW to amend By-Law No. 4742, being
"Burnaby Zoning By-Law 1965".

WHEREAS application for rezoning has been made to the
Council.

AND WHEREAS the Council has held a public hearing thereon
after duly giving notice of the time and place of such hearing.

NOW THEREFORE the Council of The Corporation of the
District of Burnaby ENACTS as follows:

1. This By-law may be cited as "BURNABY ZONING BY-LAW 1965,
AMENDMENT BY-LAW NO. 19, 1979".

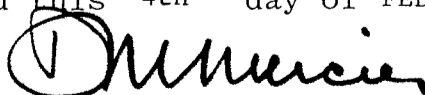
2. The Map (hereinafter called "Map 'A'") attached to and
forming an integral part of By-Law No. 4742, being "Burnaby Zoning By-
Law 1965", and designated as the Official Zoning Map of The Corporation
of the District of Burnaby, is hereby amended according to the Map
(hereinafter called "Map 'B'"), marginally numbered R.Z. 807
annexed to this By-law, and in accordance with the explanatory legend,
notations, references and boundaries designated, described, delimited
and specified in particularity shown upon said Map 'B'; and the various
boundaries and districts shown upon said Map 'B' respectively are an
amendment of and in substitution for the respective districts, designated
and marked on said Map 'A' insofar as the same are changed, modified or
varied thereby, and the said Map 'A' shall be deemed to be and is hereby
declared to be amended accordingly and the said Map 'B' is hereby declared
to be and shall form an integral part of said Map 'A', as if originally
incorporated therein, and shall be interpreted accordingly.

Read a first time this 25th day of JUNE 1979

Read a second time this 25th day of JUNE 1979

Read a third time this 27th day of AUGUST 1979

Reconsidered and adopted this 4th day of FEBRUARY 1980.



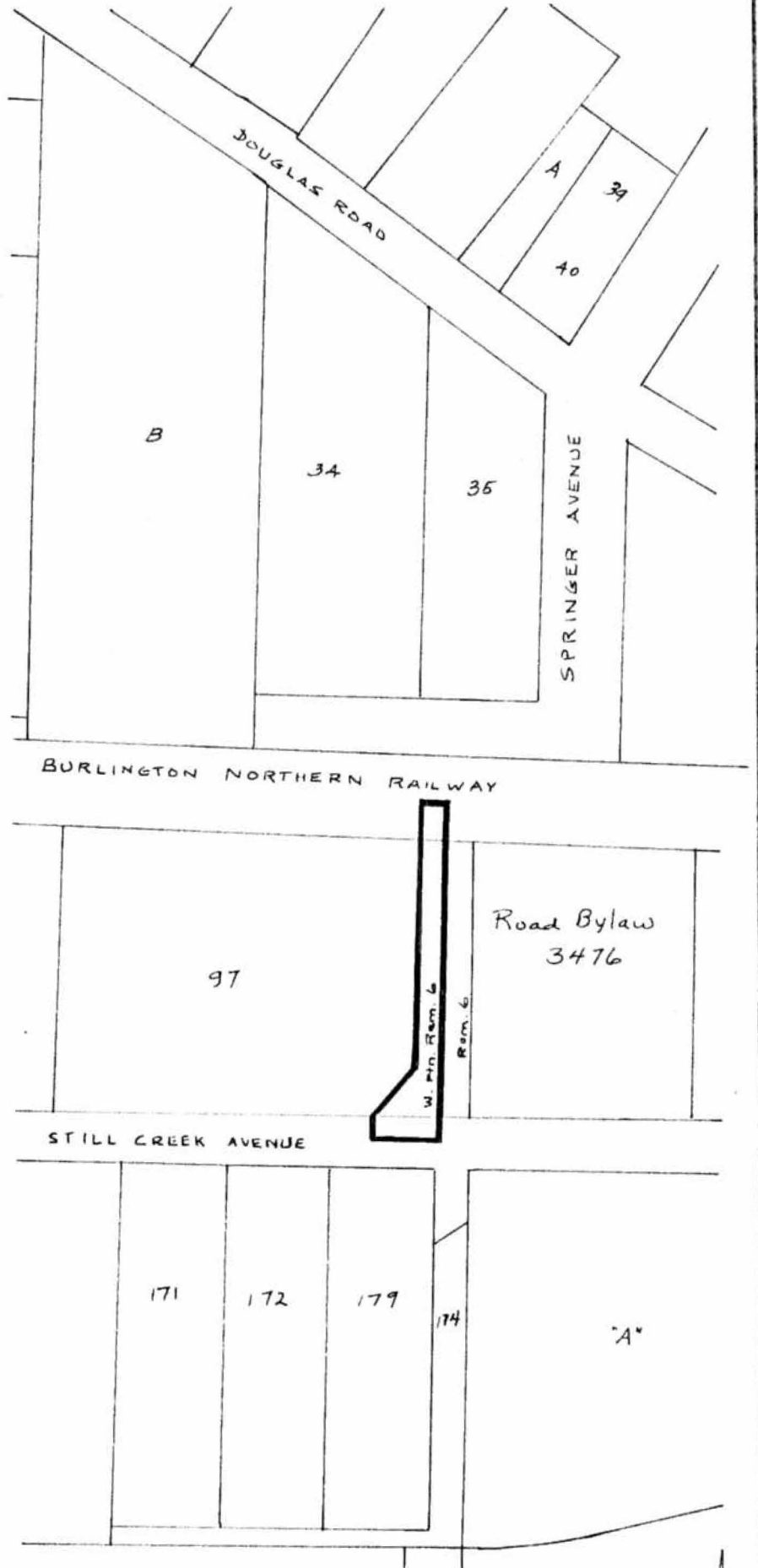
M A Y O R



C L E R K

BYLAW NUMBER 7374 BEING A BYLAW TO AMEND
BYLAW NUMBER 4742 BEING THE BURNABY ZONING BYLAW 1965

PROPERTY REZONED TO: GENERAL INDUSTRIAL DISTRICT (M2)
LEGAL: Westerly Portion of Rem. 6, D.L. 125, Plan 3782



THE AREA(S) SHOWN ABOVE
OUTLINED IN BLACK (—)
IS (ARE) REZONED:

FROM: TRUCK TERMINAL DISTRICT (M6)

TO: GENERAL INDUSTRIAL DISTRICT (M2)

James Hudson

PLANNING DEPARTMENT	
SCALE	1:2400
DRAWN	LF
DATE	79 JUNE

THE CORPORATION OF THE DISTRICT OF BURNABY

OFFICIAL ZONING MAP

No. RZ 807