

THE CORPORATION OF THE DISTRICT OF BURNABY

BY-LAW NO. 7315

A BY-LAW to amend By-Law No. 4742, being  
"Burnaby Zoning By-Law 1965".

WHEREAS application for rezoning has been made to the  
Council.

AND WHEREAS the Council has held a public hearing thereon  
after duly giving notice of the time and place of such hearing.

NOW THEREFORE the Council of The Corporation of the  
District of Burnaby ENACTS as follows:

1. This By-law may be cited as "BURNABY ZONING BY-LAW 1965,  
AMENDMENT BY-LAW NO. 3, 19 79 ".
2. The Map (hereinafter called "Map 'A'") attached to and  
forming an integral part of By-Law No. 4742, being "Burnaby Zoning By-  
Law 1965", and designated as the Official Zoning Map of The Corporation  
of the District of Burnaby, is hereby amended according to the Map  
(hereinafter called "Map 'B'"), marginally numbered R.Z. 792  
annexed to this By-law, and in accordance with the explanatory legend,  
notations, references and boundaries designated, described, delimited  
and specified in particularity shown upon said Map 'B'; and the various  
boundaries and districts shown upon said Map 'B' respectively are an  
amendment of and in substitution for the respective districts, designated  
and marked on said Map 'A' insofar as the same are changed, modified or  
varied thereby, and the said Map 'A' shall be deemed to be and is hereby  
declared to be amended accordingly and the said Map 'B' is hereby declared  
to be and shall form an integral part of said Map 'A', as if originally  
incorporated therein, and shall be interpreted accordingly.

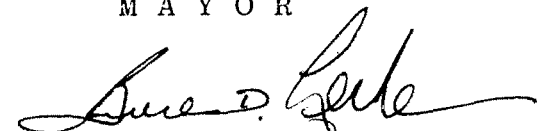
Read a first time this 19th day of FEBRUARY 1979.

Read a second time this 19th day of FEBRUARY 1979.

Read a third time this 20th day of MAY 1980

Reconsidered and adopted this day of 1980.

  
M A Y O R



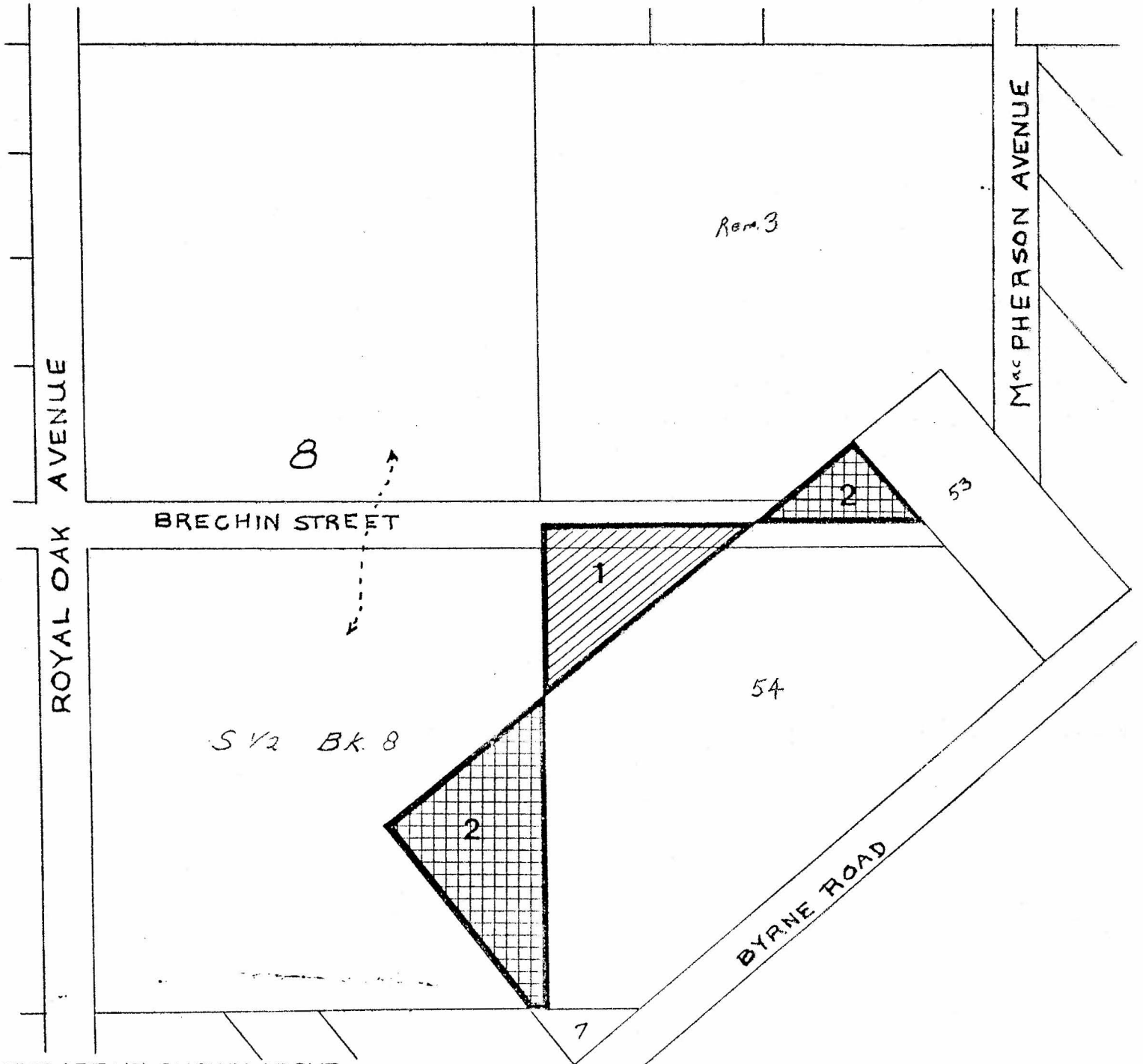
DEPUTY C L E R K

# BYLAW NUMBER 7315 BEING A BYLAW TO AMEND BYLAW NUMBER 4742 BEING THE BURNABY ZONING BYLAW 1965



PROPERTY REZONED TO: 1. PARK AND PUBLIC USE DISTRICT (P3)  
2. HEAVY INDUSTRIAL DISTRICT (M3)

LEGALS: 1. That part of Lot 54, District Lot 162, Group 1, Plan 50848, N.W.D., included within Lot 57, District Lot 162, Group 1, Plan 59085.  
2. (a) All that portion of Lot 3 of Blocks 4 and 7, District Lot 162, Group 1, Plan 3711, N.W.D. Except that part subdivided by Plan 50848 and included within Lot 58, District Lot 162, Group 1, Plan 59085  
(b) That part of Lot 59, District Lot 162, Group 1, Plan 55708, N.W.D. included within Lot 58, District Lot 162, Group 1, Plan 59085.

MAP "B"



THE AREA(S) SHOWN ABOVE  
OUTLINED IN BLACK (—)  
IS (ARE) REZONED:

-  FROM: HEAVY INDUSTRIAL DISTRICT (M3)  
TO: PARK AND PUBLIC USE DISTRICT (P3)
-  FROM: PARK AND PUBLIC USE DISTRICT (P3)  
TO: HEAVY INDUSTRIAL DISTRICT (M3)

PLANNING DEPARTMENT	
SCALE	1:2400
DRAWN	LF
DATE	179 TAN

THE CORPORATION OF THE DISTRICT OF BURNABY

## OFFICIAL ZONING MAP