

THE CORPORATION OF THE DISTRICT OF BURNABY

BY-LAW NO. 7314

A BY-LAW to amend By-Law No. 4742, being
"Burnaby Zoning By-Law 1965".

WHEREAS application for rezoning has been made to the
Council.

AND WHEREAS the Council has held a public hearing thereon
after duly giving notice of the time and place of such hearing.

NOW THEREFORE the Council of The Corporation of the
District of Burnaby ENACTS as follows:

1. This By-law may be cited as "BURNABY ZONING BY-LAW 1965,
AMENDMENT BY-LAW NO. 2 19 79 ".
2. The Map (hereinafter called "Map 'A'") attached to and
forming an integral part of By-Law No. 4742, being "Burnaby Zoning By-
Law 1965", and designated as the Official Zoning Map of The Corporation
of the District of Burnaby, is hereby amended according to the Map
(hereinafter called "Map 'B'"), marginally numbered R.Z. 795
annexed to this By-law, and in accordance with the explanatory legend,
notations, references and boundaries designated, described, delimited
and specified in particularity shown upon said Map 'B'; and the various
boundaries and districts shown upon said Map 'B' respectively are an
amendment of and in substitution for the respective districts, designated
and marked on said Map 'A' insofar as the same are changed, modified or
varied thereby, and the said Map 'A' shall be deemed to be and is hereby
declared to be amended accordingly and the said Map 'B' is hereby declared
to be and shall form an integral part of said Map 'A', as if originally
incorporated therein, and shall be interpreted accordingly.

Read a first time this 19th day of FEBRUARY 19 79.

Read a second time this 19th day of FEBRUARY 19 79.

Read a third time this 13th day of NOVEMBER 19 79.

Reconsidered and adopted this 19th day of NOVEMBER 19 79.

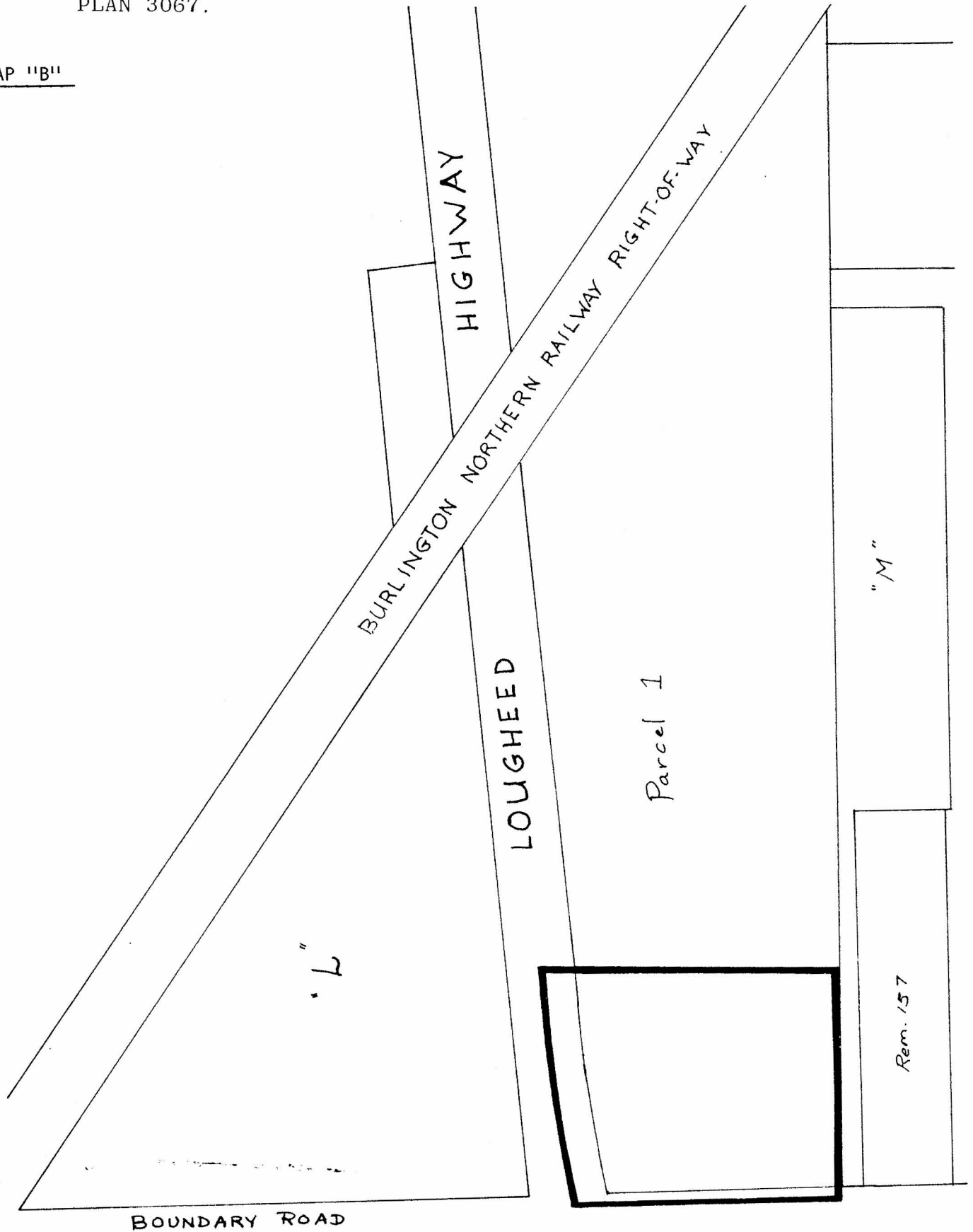

M A Y O R


C L E R K

BYLAW NUMBER 7314 BEING A BYLAW TO AMEND
 BYLAW NUMBER 4742 BEING THE BURNABY ZONING BYLAW 1965

PROPERTY REZONED TO: LIGHT INDUSTRIAL DISTRICT (M5)
 LEGAL: Portion of PCL. 1, EXPL. PLAN 12331 OF BLOCK "L", DISTRICT LOT 118,
 PLAN 3067.

MAP "B"



THE AREA(S) SHOWN ABOVE
 OUTLINED IN BLACK (—)
 IS (ARE) REZONED:

FROM: HEAVY INDUSTRIAL DISTRICT (M3)
 TO: LIGHT INDUSTRIAL DISTRICT (M5)

James Hudson

| | |
|---------------------|----------|
| PLANNING DEPARTMENT | |
| SCALE | 1:2400 |
| DRAWN | LF |
| DATE | '79 FEB. |

THE CORPORATION OF THE DISTRICT OF BURNABY

OFFICIAL ZONING MAP

No. RZ 795