

THE CORPORATION OF THE DISTRICT OF BURNABY

BY-LAW NO. 7269

A BY-LAW to amend By-Law No. 4742, being
"Burnaby Zoning By-Law 1965".

WHEREAS application for rezoning has been made to the
Council.

AND WHEREAS the Council has held a public hearing thereon
after duly giving notice of the time and place of such hearing.

NOW THEREFORE the Council of The Corporation of the
District of Burnaby ENACTS as follows:

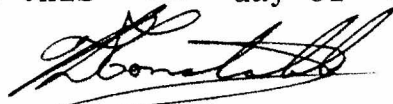
1. This By-law may be cited as "BURNABY ZONING BY-LAW 1965,
AMENDMENT BY-LAW NO. 25, 1978".
2. The Map (hereinafter called "Map 'A'") attached to and
forming an integral part of By-Law No. 4742, being "Burnaby Zoning By-
Law 1965", and designated as the Official Zoning Map of The Corporation
of the District of Burnaby, is hereby amended according to the Map
(hereinafter called "Map 'B'"), marginally numbered R.Z. 787,
annexed to this By-law, and in accordance with the explanatory legend,
notations, references and boundaries designated, described, delimited
and specified in particularity shown upon said Map 'B'; and the various
boundaries and districts shown upon said Map 'B' respectively are an
amendment of and in substitution for the respective districts, designated
and marked on said Map 'A' insofar as the same are changed, modified or
varied thereby, and the said Map 'A' shall be deemed to be and is hereby
declared to be amended accordingly and the said Map 'B' is hereby declared
to be and shall form an integral part of said Map 'A', as if originally
incorporated therein, and shall be interpreted accordingly.

Read a first time this 27th day of November, 1978

Read a second time this 27th day of November, 1978

Read a third time this 2nd day of January, 1979

Reconsidered and adopted this 8th day of January, 1979.


MAYOR


CLERK

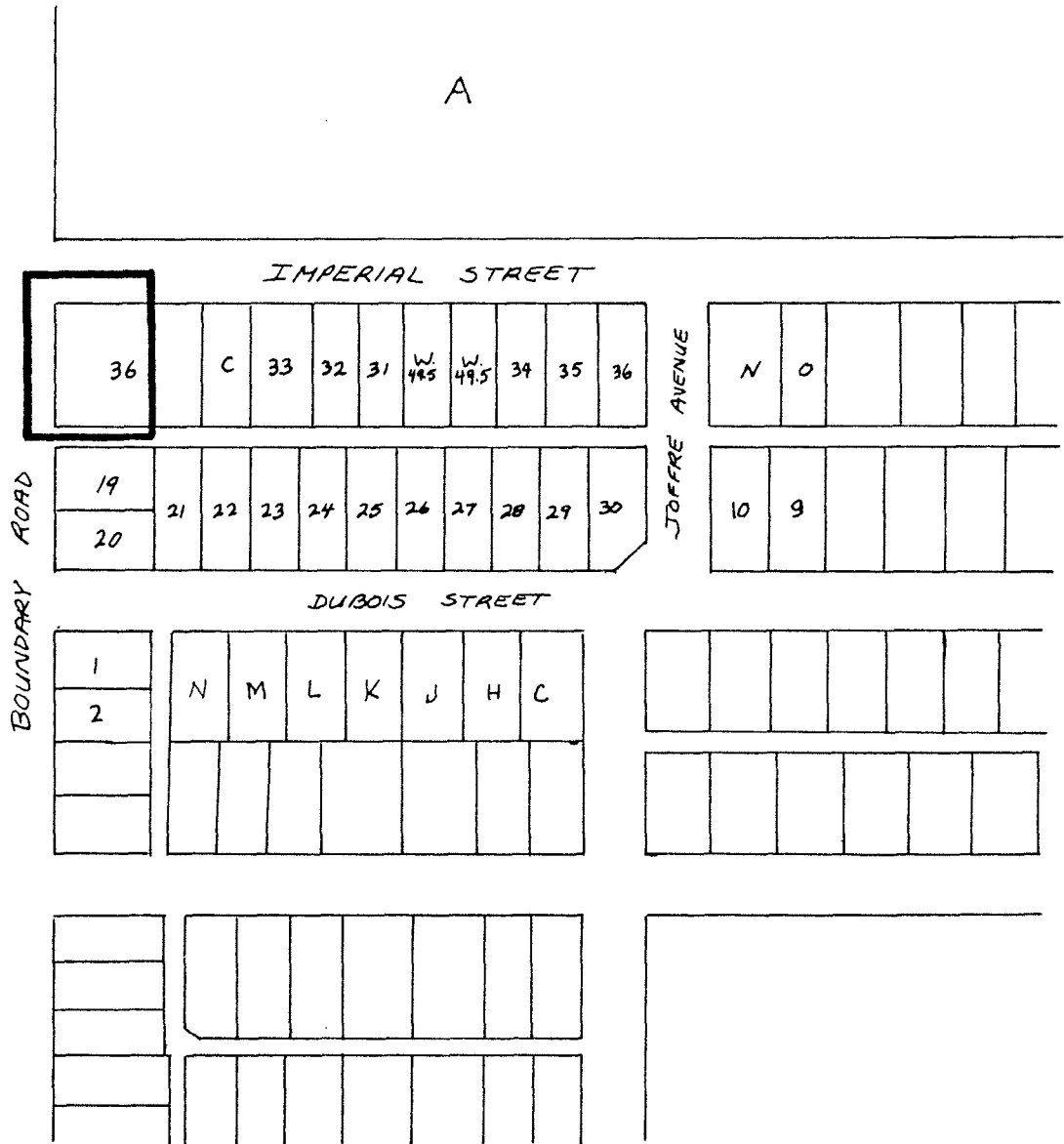


BYLAW NUMBER 7269 BEING A BYLAW TO AMEND
BYLAW NUMBER 4742 BEING THE BURNABY ZONING BYLAW 1965

PROPERTY REZONED TO: GASOLINE SERVICE STATION DISTRICT - SELF-SERVE (C6a)

LEGAL: Westerly portion of Lot 36, D.L. 150, Plan 36280

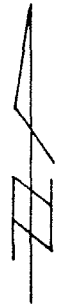
MAP "B"



THE AREA(S) SHOWN ABOVE
OUTLINED IN BLACK (—)
IS (ARE) REZONED:

FROM: GASOLINE SERVICE STATION DISTRICT (C6)

TO: GASOLINE SERVICE STATION DISTRICT - SELF-SERVE (C6a)



James Hudson
 THE CORPORATION OF THE DISTRICT OF BURNABY

PLANNING DEPARTMENT	
SCALE	1: 2400
DRAWN	C.M.
DATE	1978 NOVEMBER

OFFICIAL ZONING MAP

No. RZ 787